



Community Facilities Water & Sewer

2020 CDBG Application Workshop

Grant Amounts

- Less than 5,000 population \$600,000
- More than 5,000 population \$700,000
- Multiply # of project beneficiaries by \$2,000 to arrive at the amount
- # of beneficiaries will determine maximum

Eligible Applicants

- Cities under 50,000 Population
 - Cities, one application per year
- Counties under 100,000 Population
 - Counties, two applications per year
 - Two on behalf of or one on behalf of and one for county.

Application Deadlines

- Water/Sewer- September 27, 2019
- Community Facility- November 1, 2019

Examples of Eligible Activities

Community Facility

Community Centers
Fire Stations/ Trucks
Streets
Gas Systems
Storm Drainage
Playgrounds
Many More...

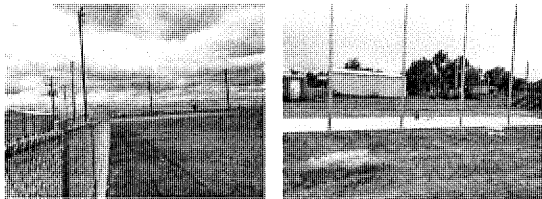
Water/Sewer

Water Lines
Water Towers
Water Wells/Treatment
Sewer Lines
Sewer Lagoons
Treatment Plants

Community Facility

- Possible Eligible CF Projects
 - Streets, Sidewalks, Parks, Ball Diamonds, Electrical, Gas Distribution, Community Center, Senior Center, Homeless Shelter, Library, Fire Trucks, etc.

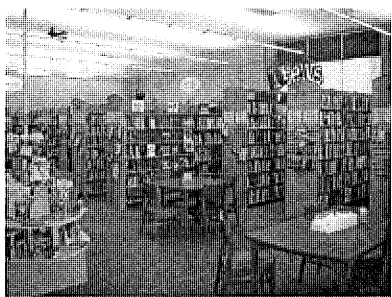
Quinter - Ballfields



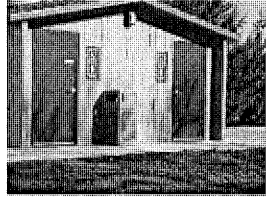
Linn County - Fire Station



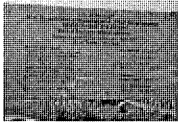
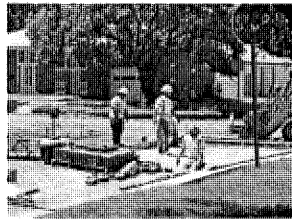
Iola - Library



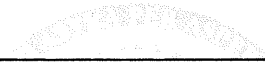
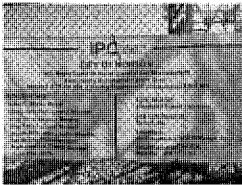
Natoma - Park Project



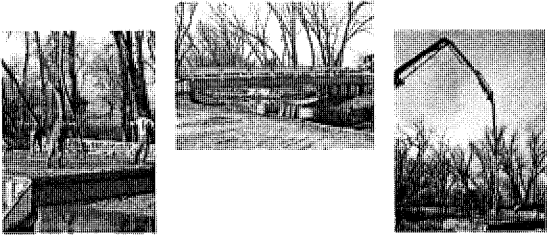
Russell - Streets




Norton - Electrical Project

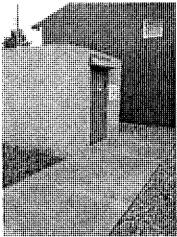



Decatur County - Bridge





Uniontown - Storm Shelter






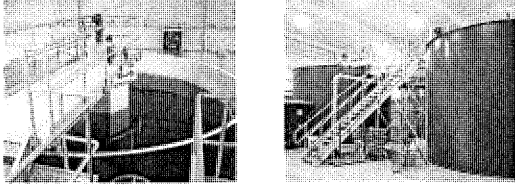
Water and Wastewater

- Possible Water/Sewer Eligible Activities
 - Water Distribution Systems, Sewer System, Lagoons, Wastewater Treatment Plants, Water Treatment Plants, etc.

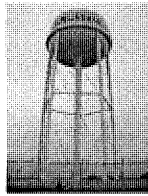
- Must Attend a KIAC Meeting every 2 years
 - KIAC- Kansas Interagency Advisory Committee



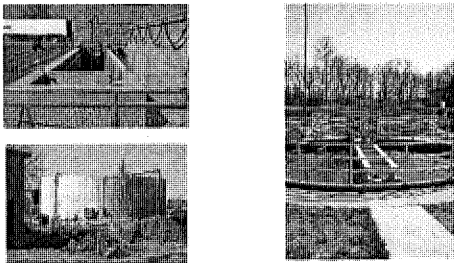
Chetopa – Water Treatment Plant



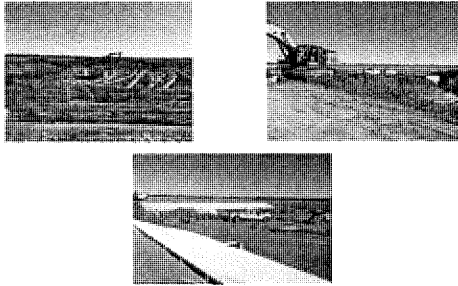
Burlingame - Water Tower



Baldwin City –
Waste Water Treatment



Long Island - Waste Water



KIAC

- Every water/sewer applicant should attend a KIAC meeting prior to submission
 - Not attending results in a 10 point deduction on application
- Meetings held every 2nd and 4th Tuesday May-July. 2nd Tuesday in August will be in Hays for the western counties.



Attendance

- A city or county representative is required
- Project engineer
- Agency representatives
 - USDA-Rural Development
 - KDHE (Kansas Dept. Health and Environment)
 - Kansas Water Office (water projects)
 - CDBG Staff



Presentation

- Must have all info to Commerce 2 weeks prior
- Applicant has one hour to present
- What to include
 - Project Map
 - PER
 - Questions for KIAC members
 - No PowerPoints

Regional Project

- MOU
- KDHE, Commerce and USDA-RD
- Voluntary Program for regional approach
- Two or more entities together for common need
- Water projects only
- CDBG application must address regional alternatives

Writing the Application

- Tell us your story!
 - Raters may have never been to your town
 - NOT just technical terms
- Proofread your application
 - The City/County, the grant administrator and others should read
- Include ALL forms and Letters
 - Missing information, forms and letters is a 10 Point Deduction!

Project Need

- State your need for the project
- How long has it existed?
- What caused it?
- List any violations in State/Fed Regs
 - Include letters addressing violations
- How many water/sewer breaks?

Project Need

- Street Projects
 - What maintenance has been done?
- Include facts and figures
- Non-technical terms
 - Don't copy PER

Project Need

Project Need carries the MOST points!

Address Your Need Well!

Project Alternatives

- DETAILS!
- Show us effort and thought!
- Different locations- existing versus new
- Different construction options- materials used
- Must address regionalization (water)
- Be creative!



Project Alternatives

- Financial Alternatives
 - Different funding sources
 - What is most cost effective- may not be cheapest
 - Be creative!
 - Show us effort and thought!
- Scope of Work in detail



Past Efforts

- What has the community done for themselves over the last 5 years?
 - Repaved streets
 - Painted water tower
 - Build playground
- The more active the better
- Not just the project you are applying for



Project Readiness

- Is the applicant ready to proceed?
- Purchase of land or option to buy
- Pre-selection of professional services
 - Administrator
 - Engineer/architect
- Documentation of leverage- letters

Project Readiness

These Points are All or Nothing!

Leverage

- 25% minimum match for all projects
- No funding without local investment
- Points are based on % of match
 - Up to one to one match
 - Max points are 20 points
- Many communities score low on leverage, the more you put in the higher the score!

Local Effort- CF

- Based on per capita indebtedness/total population
- Based on assessed tangible valuation/total population
- Applicant LMI %/Pool LMI %
- Applicant LMI #/Pool LMI #
- Each formula worth 5 points

Local Effort- W/S

- Water-Sewer Rate of applicant/state average water-sewer rate
- Water-Sewer revenue/per capita income divided by
- Total Water-Sewer revenue of pool/average per capita income of pool


State Rates

- Average State Rates for \$5,000 gal.
 - Water
 - City \$34.00
 - RWD \$47.00
 - Sewer
 - \$28.00

Incomplete Applications

- 10 points will be deducted for any errors or omissions in an application
 - Allowed to correct before rating
 - 2 week deadline to submit

- 10 point deduction on W/S if no KIAC




Procurement

- If CDBG is asked to pay for any services, the CDBG procurement must take place.


- Request for Qualification

- Construction contracts must be competitively bid



Environmental Review

- Must have "Determination of Level of Review" included with application
- Carry out after award
- 6 months to clear from CDBG contract Start date
- Historical Society approval for any questionable projects.



Last Minute Details

- ADA curb cuts- Must go somewhere and have a sidewalk attached
- Project scope of work must match public hearing
 - Double check it was published and is correct
- City/County read apps before submitted

Questions or Review

- We are happy to answer questions!
- Pre-Approval of Target Areas
- ALL reviews of application materials should be submitted THREE WEEKS Prior to deadlines!



General CDBG questions, please send to
kdc_cdbg_inbox@ks.gov

Kansas Department of Commerce
Ginny M. Eardley, CDBG Program Specialist
Ginny.M.Eardley@ks.gov
(785) 296-3610
KansasCommerce.gov/CDBG
