

Total Project Investment:
\$151,094

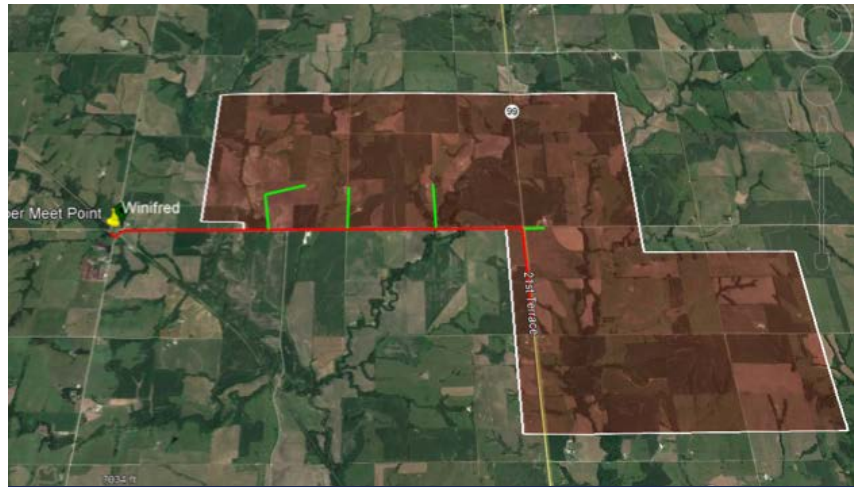
Award Amount:
\$75,547

In Partnership With:



ABOUT THE NEED

Winifred, KS and the surrounding rural area is continuously left behind and underserved in terms of broadband. Gigabit service delivery is key to transforming communities, rebuilding urban centers, revitalizing schools, enhancing power grid reliability, stimulating economic growth, and improving the quality of life. Broadband expansion in the rural area east of Winifred, KS will allow for connectivity to be brought to 24 community anchors, 13 households, 19 businesses, three municipal organizations, one library and one educational institution. The proposed upload and download speed of this fiber to the premise expansion is up to one Gbps symmetrical. Fiber broadband is the most scalable and future-proof technology to deliver gigabit services now and into the future, which will continuously provide a full proof connection. This broadband expansion will equip Marshall County with sufficient bandwidth for remote learning, remote healthcare and job creation and retention.



Marshall County, Rural Areas East of Winifred, Kansas

ABOUT BLUE VALLEY TECHNOLOGIES, INC.

Blue Valley Technologies is a wholly owned subsidiary of Blue Valley Tele-Communications, Inc. Supporting them in the Broadband Acceleration Grant is Leonard Wolfe, Community Healthcare System, Marshall County Partnership for Growth and the Marshall County Board of Commissioners. Blue Valley Technologies also received a Connectivity Emergency Response Grant in addition to the Broadband Acceleration grant to better provide connectivity in their communities.

The Kansas Office of Broadband Development was established in 2020 to help ensure that all Kansans have the opportunity to live, work, learn and compete in a global economy by improving universal access to quality, affordable and reliable broadband. The Office is housed within the Community Development Division of the Kansas Department of Commerce. As the state's lead economic development agency, Commerce strives to empower individuals, businesses and communities to achieve prosperity in Kansas.