

Total Project Investment:

**\$388,750**

Award Amount:

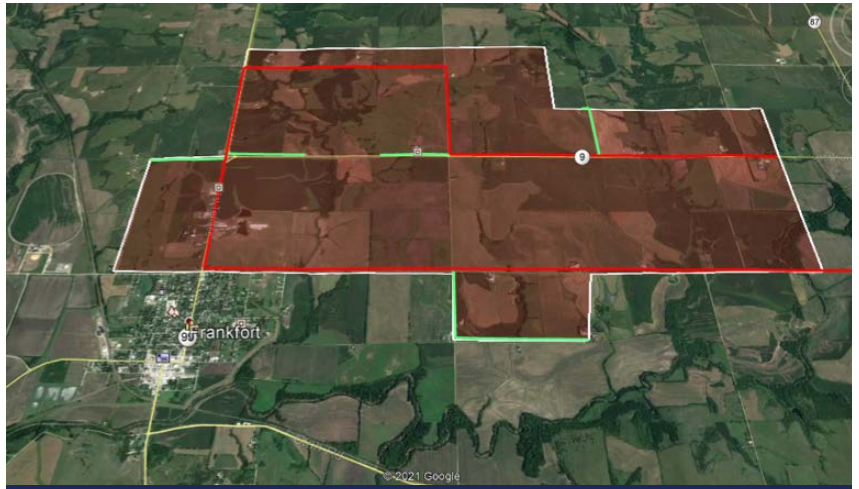
**\$194,375**

In Partnership With:



## ABOUT THE NEED

Currently, select households in the rural area north of Frankfort know all too well the speed and reliability limitations of wireless technology. The reality being, the majority of this rural community lacks robust, reliable broadband access. This expansion north of Frankfort will offer up to 1 Gbps symmetrical upload and download speeds and provide broadband to 30 households, three community anchors, two businesses, and one healthcare organization. This project has been engineered to run from the central office of Vermillion through the rural area north of Frankfort. Smaller distribution fibers will feed customer locations, delivering gigabit symmetrical speeds. Gigabit service delivery is key to transforming communities, rebuilding urban centers, revitalizing schools, enhancing power grid reliability, stimulating economic growth, and improving the quality of life.



Marshall County, Rural Areas North of Frankfort, Kansas

## ABOUT BLUE VALLEY TECHNOLOGIES, INC.

Blue Valley Technologies is a wholly owned subsidiary of Blue Valley Tele-Communications, Inc. Blue Valley Technologies received an additional Connectivity Emergency Response Grant in addition to their Broadband Acceleration Grant, to better help deploy broadband expansion. Blue Valley Technologies had community support from Community HealthCare Systems, Country Futures, Wanklyn Oil, First National Bank of Frankfort, Marshall County Board of Commissioners and Marshall County Partnership for Growth.

**The Kansas Office of Broadband Development** was established in 2020 to help ensure that all Kansans have the opportunity to live, work, learn and compete in a global economy by improving universal access to quality, affordable and reliable broadband. The Office is housed within the Community Development Division of the Kansas Department of Commerce. As the state's lead economic development agency, Commerce strives to empower individuals, businesses and communities to achieve prosperity in Kansas.