

Total Project Investment:

**\$1,751,846**

Award Amount:

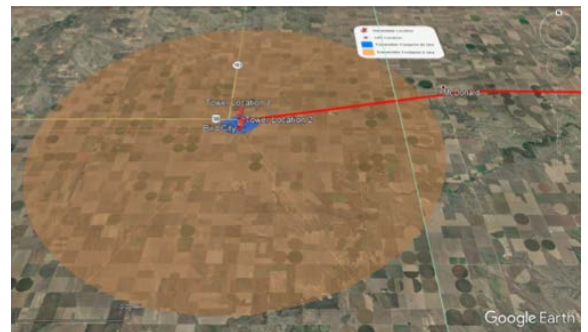
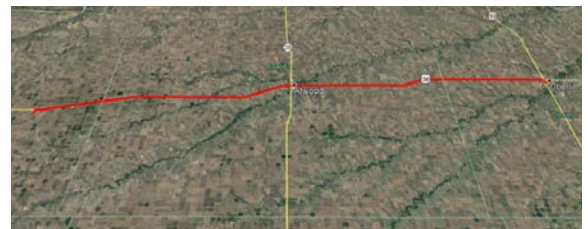
**\$875,923**

In Partnership With:



## ABOUT THE NEED

Bird City, Atwood and McDonald are all rural communities that have been left behind in terms of broadband. Deployment of this project will potentially connect 43 businesses and 386 potential residential customers. Fiber to the premise will be deployed to approximately 12 locations within the community, including two schools and six anchor institutions. With this project, Nex-Tech will also provide free 50Mbps service to the library in Bird City. Fixed wireless will be deployed to the remaining locations in the town and perimeter of the town. In addition, fiber to the premise will be available to approximately 30 locations in unserved areas along Highway 36. Approximately 42 fiber customers are expected to take service using an initial fiber adoption rate of 100% and approximately 194 wireless subscribers are expected to take service using an initial wireless adoption rate of 50%.



Cheyenne, Rawlins and Decatur Counties;  
Cities of Bird City, Atwood, McDonald

## ABOUT NEX-TECH

Nex-Tech has been providing telecommunications services to northwest and central Kansas for nearly 70 years and has been an Internet Service Provider since 1996. Nex-Tech's fiber to the premise footprint encompasses 52 different communities across Kansas. Nex-Tech also provides fixed wireless Internet service to thousands of customers in rural areas of Kansas. This fixed wireless technology has evolved and grown over the course of almost 20 years into what it is today. Nex-Tech recently completed five Connectivity Emergency Response Grants on time and within budget, to bring even more broadband connections to rural parts of Kansas. Nex-Tech strives to promote economic growth, investment in and ultimately, the repopulation of rural Kansas.

**The Kansas Office of Broadband Development** was established in 2020 to help ensure that all Kansans have the opportunity to live, work, learn and compete in a global economy by improving universal access to quality, affordable and reliable broadband. The Office is housed within the Community Development Division of the Kansas Department of Commerce. As the state's lead economic development agency, Commerce strives to empower individuals, businesses and communities to achieve prosperity in Kansas.