

Total Project Investment:

**\$1,011,658**

Award Amount:

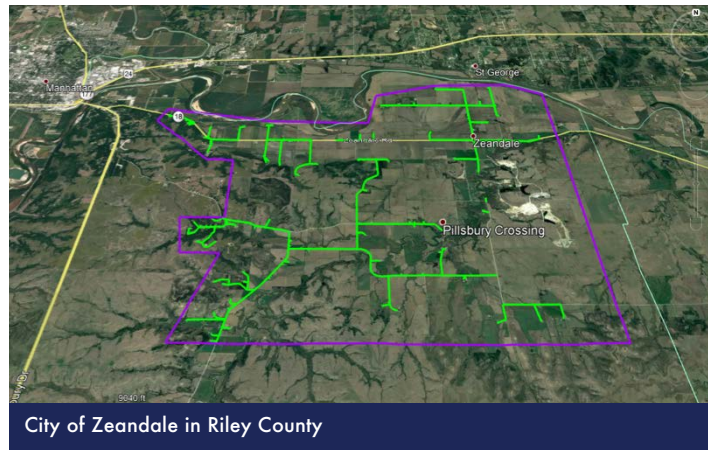
**\$505,829**

In Partnership With:



## ABOUT THE NEED

Zeandale is a small suburban fringe community that has been left behind in terms of broadband access. This project is proposed in a 30 square mile area in southeast Riley county—roughly 15 minutes from the City of Manhattan—to bring robust broadband service to 172 locations, which includes 162 households and 10 community anchor institutions and businesses. Grant funds provided by the Broadband Acceleration Grant will be used to extend the existing fiber infrastructure to provide FTTP (Fiber-To-The-Premise) broadband service to every household, business, and community anchor institution within the proposed service area, which includes many rural residences, farms, businesses, and the Zeandale Community Church. This broadband project will bring 1Gbps/1Gbps up and down connectivity to these 162 households, ten community anchors and businesses. Because of this project, the residents and businesses within the proposed service area will see many economic and community development benefits. Affordable, high-speed broadband will allow businesses in the area to function more efficiently and cost-effectively. One business in the proposed service area spends \$350-\$600 a month for poor Internet service from a mobile hotspot, because it is the only option in terms of broadband that they have. Access to broadband is a large barrier for rural areas attracting businesses to their region. With this barrier removed, this rural area will have a better chance of attracting new residents and businesses which improve the overall quality of these citizens lives.



## ABOUT WTC

For over 100 years, WTC has been providing leading-edge communication services. Through advanced technology, they continue to launch higher speed broadband services, so businesses can grow, schools can leverage educational opportunities, telemedicine can be offered in their rural settings and communities can enhance their economic development. WTC also received the Emergency Connectivity Response Grant (CERG), to better provide their community with broadband access. WTC strives to provide the same level of dedication and commitment to the needs of their local communities. They truly believe in being a good corporate citizen in the areas they serve and giving of back is not just a part their mission, but also a core value of the organization.

**The Kansas Office of Broadband Development** was established in 2020 to help ensure that all Kansans have the opportunity to live, work, learn and compete in a global economy by improving universal access to quality, affordable and reliable broadband. The Office is housed within the Community Development Division of the Kansas Department of Commerce. As the state's lead economic development agency, Commerce strives to empower individuals, businesses and communities to achieve prosperity in Kansas.