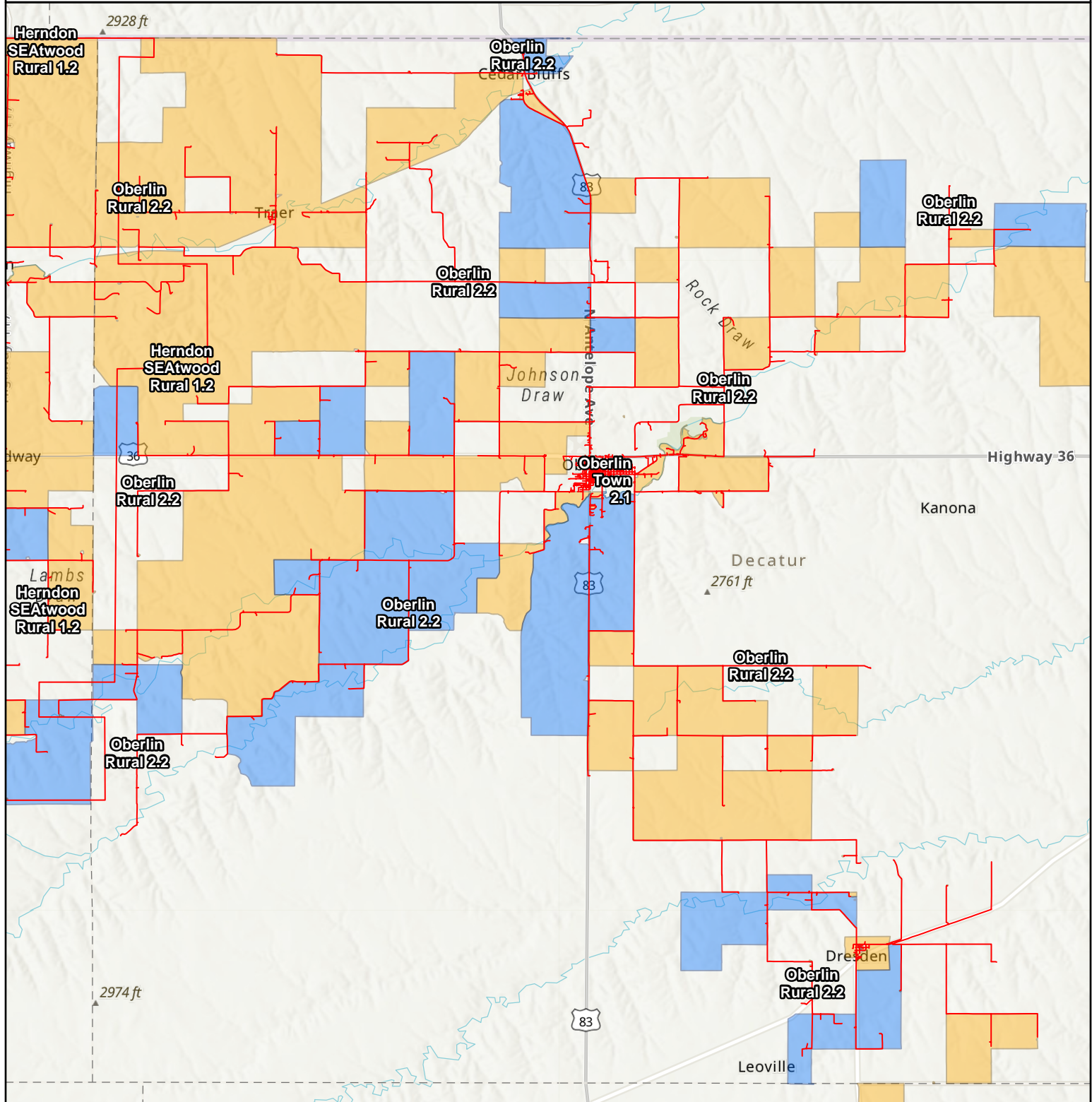


Kansas CPF Challenge Awarded RDOF / CAF II Block



Applicant: Nex-Tech

Project: Oberlin Rural 2.2

Esri, HERE, Garmin, SafeGraph, METI/NASA, USGS, EPA, NPS, USDA, Esri, NASA, NGA, USGS

- Challenged Fiber Projects
- AMG Technology - RDOF Obligation
- AMG Technology - CAF Obligation

Date: 9/7/2022

0 1.9 3.8 5.7 7.6 9.5
Miles