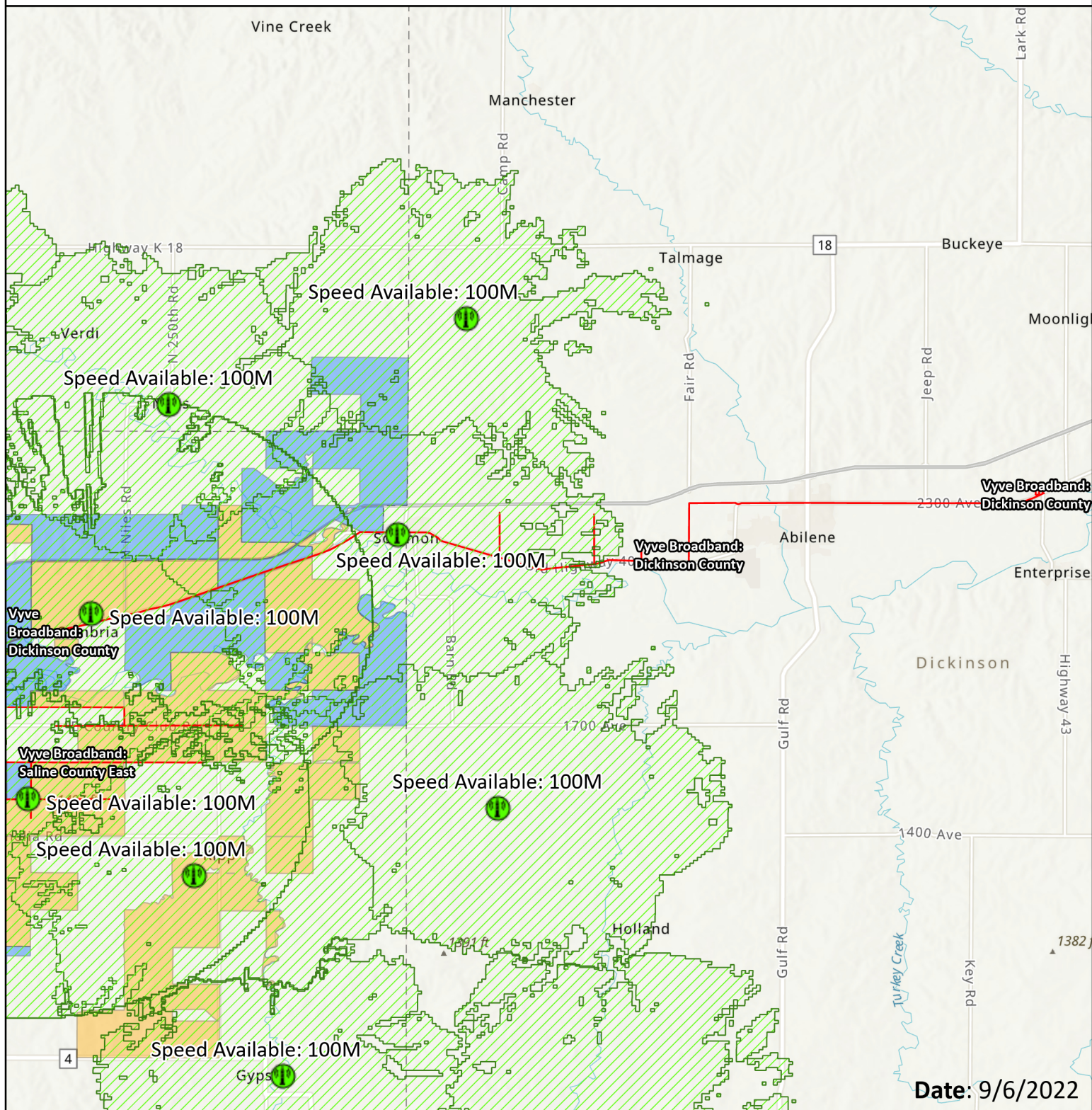


# Kansas CPF Challenge

## 100MB/20MB Service Available



**Applicant:** Vyve Broadband

**Project:** Dickinson County

Esri, HERE, Garmin, SafeGraph, METI/NASA, USGS, EPA, NPS, USDA, Esri, NASA, NGA, USGS

- Challenged Fiber Project
- AMG Technology (Nextlink) Active Tower
- ▨ AMG Technology (Nextlink) 100MB/20MB or Higher Active Coverage
- AMG Technology - RDOF Obligation
- AMG Technology - CAF Obligation

0 1.8 3.6 5.4 7.2 9 Miles