



Capital Project Fund Grant Public Comment

Kansas Office of Broadband Development

September 2022

Contested Application

"Butler Rural Electric Cooperative Association (Project 3)"

Evidence Presented By

SKT

Comments

SKT is submitting information to show that it provides broadband service in areas targeted by the "Butler Rural Electric Cooperative Association (Project 3)" Capital Project Fund Grant application.

In the Public Project Proposal, Butler Rural Electric Cooperative Association indicates that it would serve the cities of Leon, Rosalia, and Severy.

SKT is in the process of upgrading facilities in the Leon, Severy, and Rosalia communities which will be complete within the next 3-8 weeks. These upgrades make the Butler Rural Electric Association grant application dollars unnecessary and allows funding to be focused on areas with greater need.

SKT Leon Upgrade

SKT provides 150/15 Mbps Cable Modem service within the community of Leon. In total, more than 290 homes/businesses are passed by SKT in which overlaps the proposed Butler Rural Electric Cooperative Association area.

SKT will be upgrading its Leon broadband facilities later this month, allowing us to provide 150/20 Mbps service, which meets and exceeds the 100/20 Mbps broadband speed requirement for the Capital Project Fund Grant.

A screenshot has been included on the subsequent page showing SKT's Leon service area in blue and proposed Butler Rural Electric Association service locations as red dots.

Map – Leon

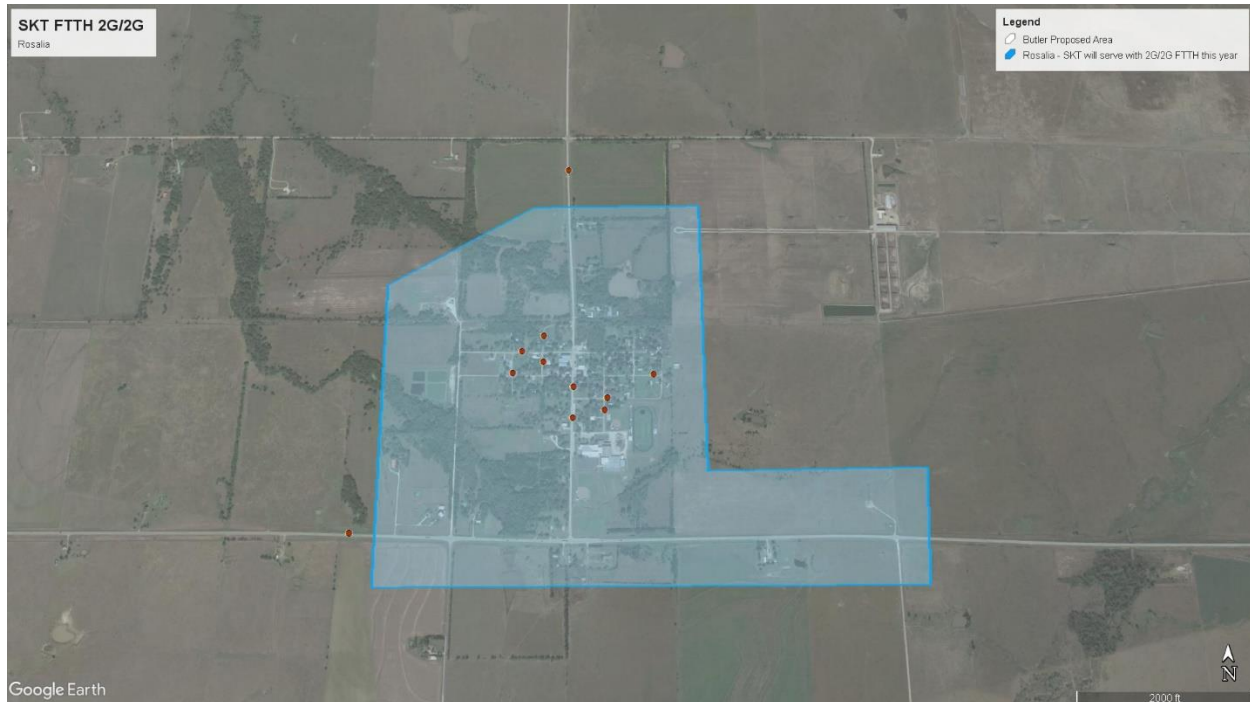


SKT Rosalia Upgrade

SKT is in the final stages of a fiber upgrade in Rosalia, with mainline construction complete, and splicing near completion. Customer installations will begin in the next 6-8 weeks, allowing 80 homes/businesses access to 2 Gbps symmetrical fiber broadband.

A screenshot has been included on the subsequent page showing SKT's Rosalia service area in blue and the proposed Butler Rural Electric Association service area as red dots.

Map – Rosalia



The following links provide examples of recent marketing efforts related to the Rosalia upgrade.

- Press release/Newsroom Article: <https://www.sktc.net/2022/06/rosalia-to-be-among-the-first-in-the-nation-to-get-up-to-2-gbps-fiber-internet/>
- Email to existing customers 6/28: <https://conta.cc/3bafOyu>
- Email to existing customers 9/7: <https://conta.cc/3wlk5RD>
- Facebook posts (on SKT page and in Rosalia, Kansas Facebook group:

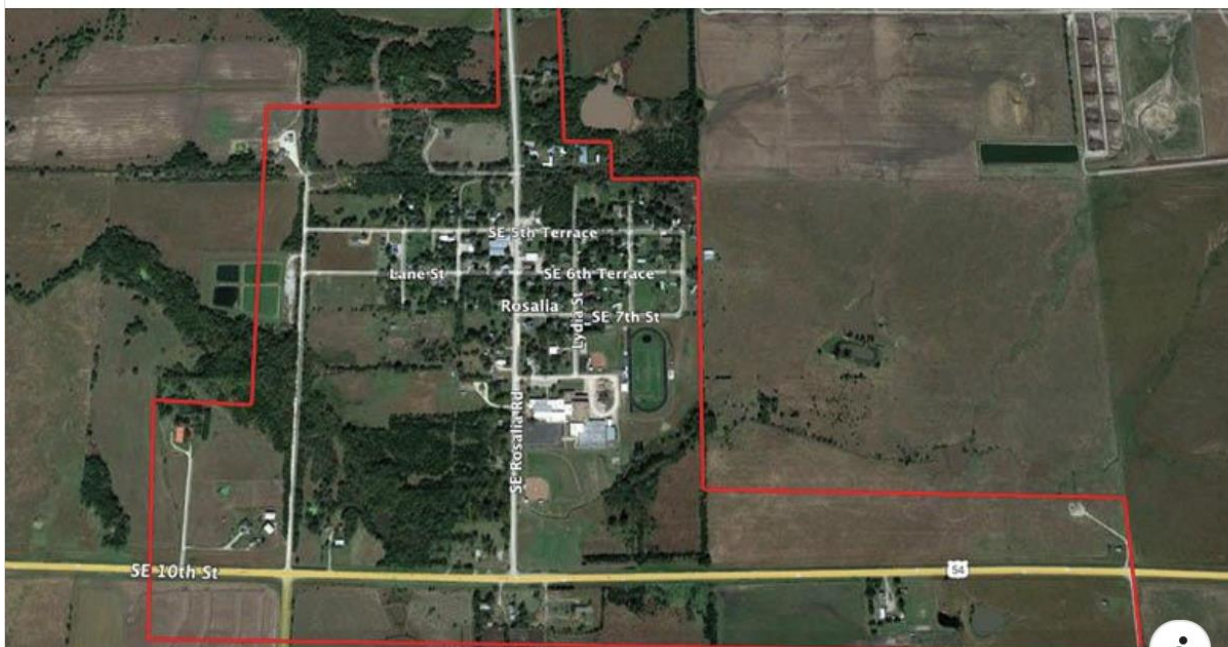


SKT

June 28 · ⚙️



We are excited to announce that we are building fiber to homes and businesses in Rosalia, replacing the existing copper infrastructure for 26 times faster download and 200 times faster upload speeds. Rosalia will be the first in SKT's network to get up to 2 Gbps symmetrical, which equals 2,000 Mbps download and upload, with the most reliable fiber technology! Learn more on our website.



SKTC.NET

Rosalia to Be Among the First in the Nation to Get up to 2 Gbps Fiber Internet - SKT

SKT Severy Upgrade

SKT provides 1 Gbps/15 Mbps Cable Modem service within the community of Severy. In total, more than 130 homes/businesses are passed by SKT in which overlaps the proposed Butler Rural Electric Cooperative Association area.

SKT will be upgrading its Severy broadband facilities later this month, allowing us to provide 1 Gbps/20 Mbps service, which meets and exceeds the 100/20 Mbps broadband speed requirement for the Capital Project Fund Grant.

A screenshot has been included on the subsequent page showing SKT's Severy service area in blue along with the proposed Butler Rural Electric Association area.

Map – Severy



SKT offers competitive rates and partners with federal and state government to provide the Affordable Connectivity Program, Lifeline, and Kansas Emergency Rental Assistance benefits, to help foster digital inclusion in the state of Kansas.