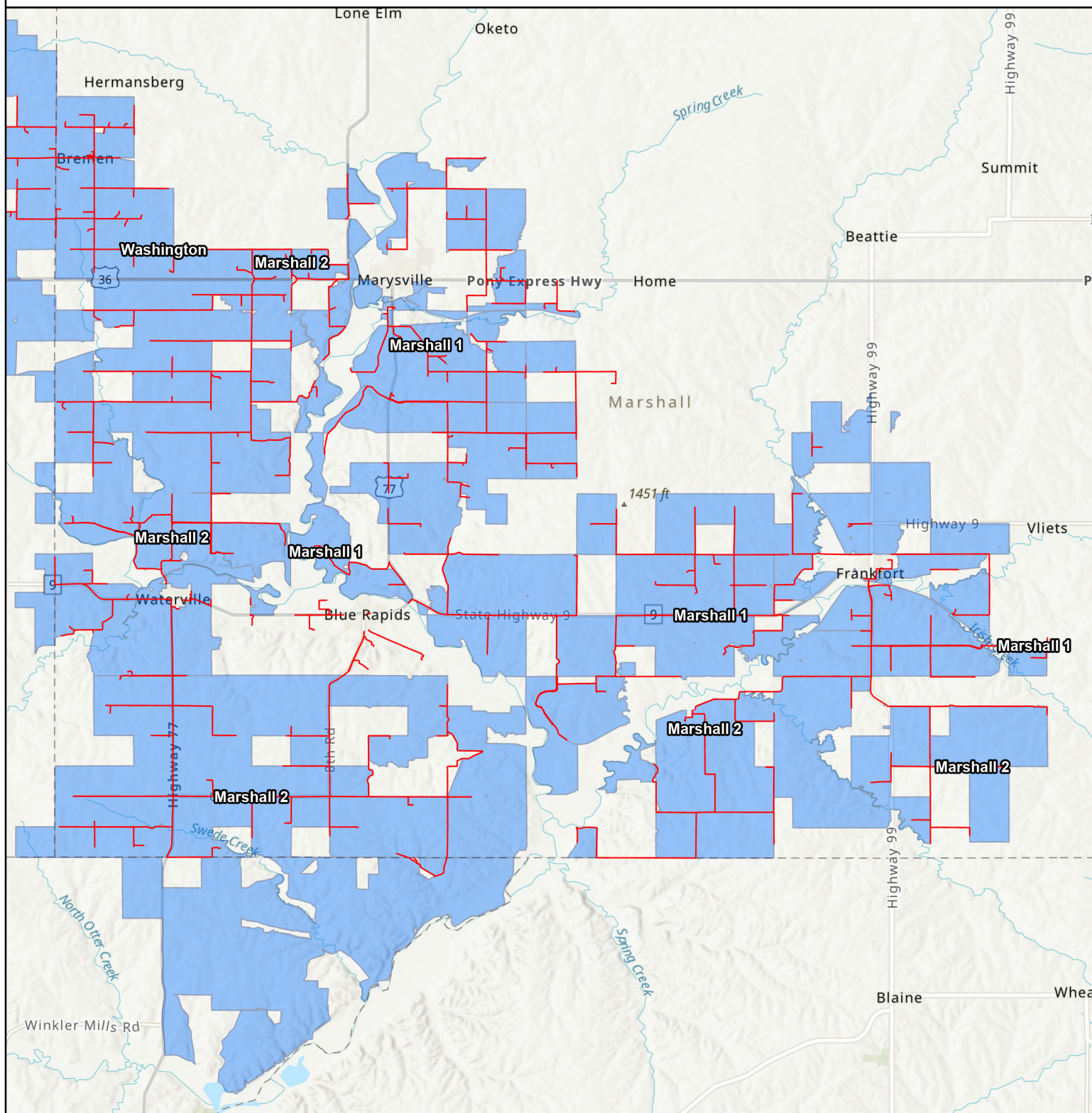


# Kansas CPF Challenge

## Awarded RDOF / CAF II Block



**Applicant: BVT**

**Project: Marshall 2**

Esri, HERE, Garmin, SafeGraph, METI/NASA, USGS, EPA, NPS, USDA, Esri, NASA, NGA, USGS

- **Challenged Fiber Projects**
- AMG Technology - RDOF Obligation
- AMG Technology - CAF Obligation

**Date: 9/7/2022**

