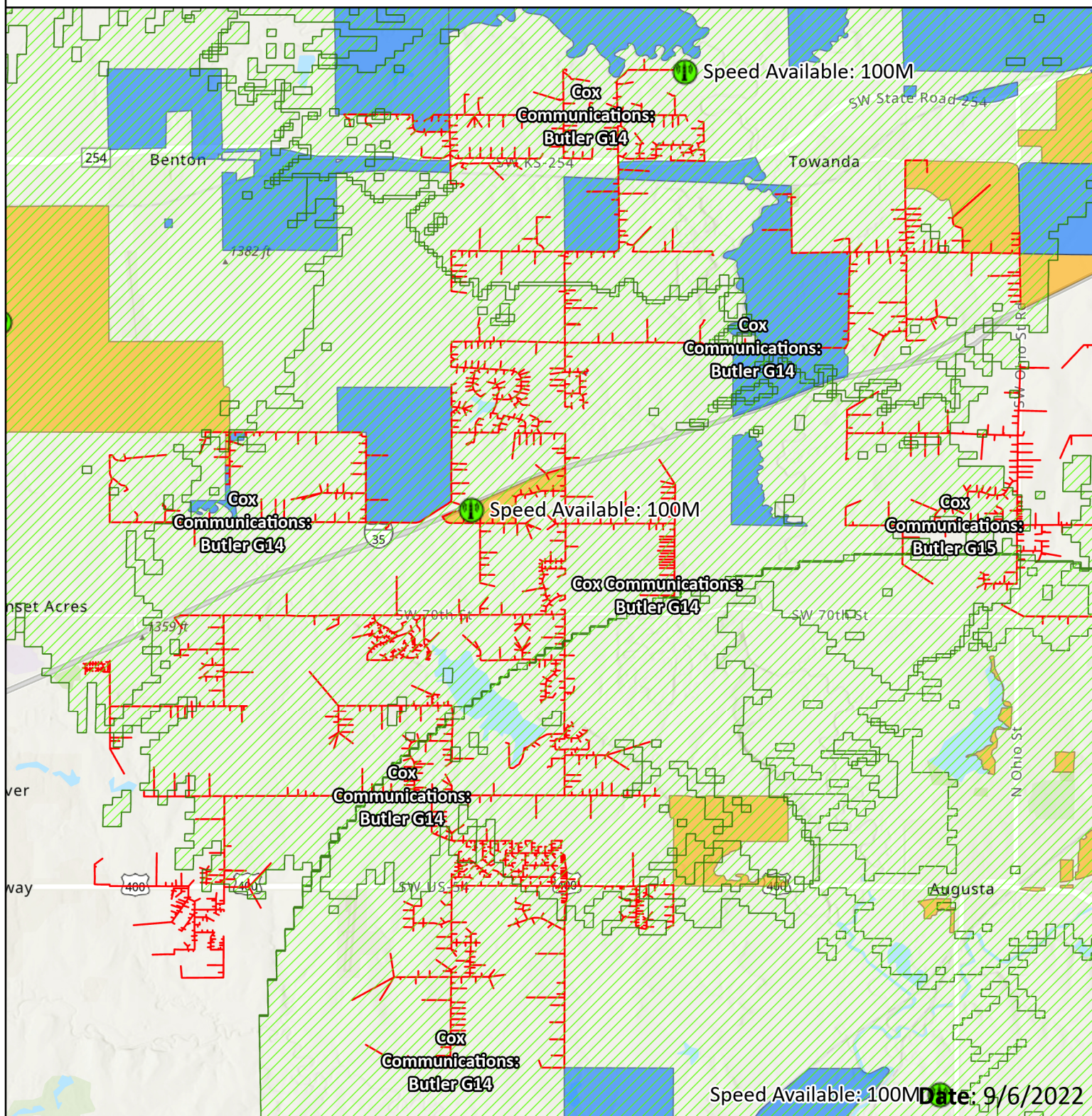


Kansas CPF Challenge

100MB/20MB Service Available



Applicant: Cox Communications

Project: Butler G14

Esri, NASA, NGA, USGS, FEMA, Esri, HERE, Garmin, SafeGraph, GeoTechnologies, Inc, METI/NASA, USGS, EPA, NPS, USDA

- Challenged Fiber Project
- AMG Technology (Nextlink) Active Tower
- AMG Technology (Nextlink) 100MB/20MB or Higher Active Coverage
- AMG Technology - RDOF Obligation
- AMG Technology - CAF Obligation

0 0.72 1.44 2.16 2.88 3.6 Miles