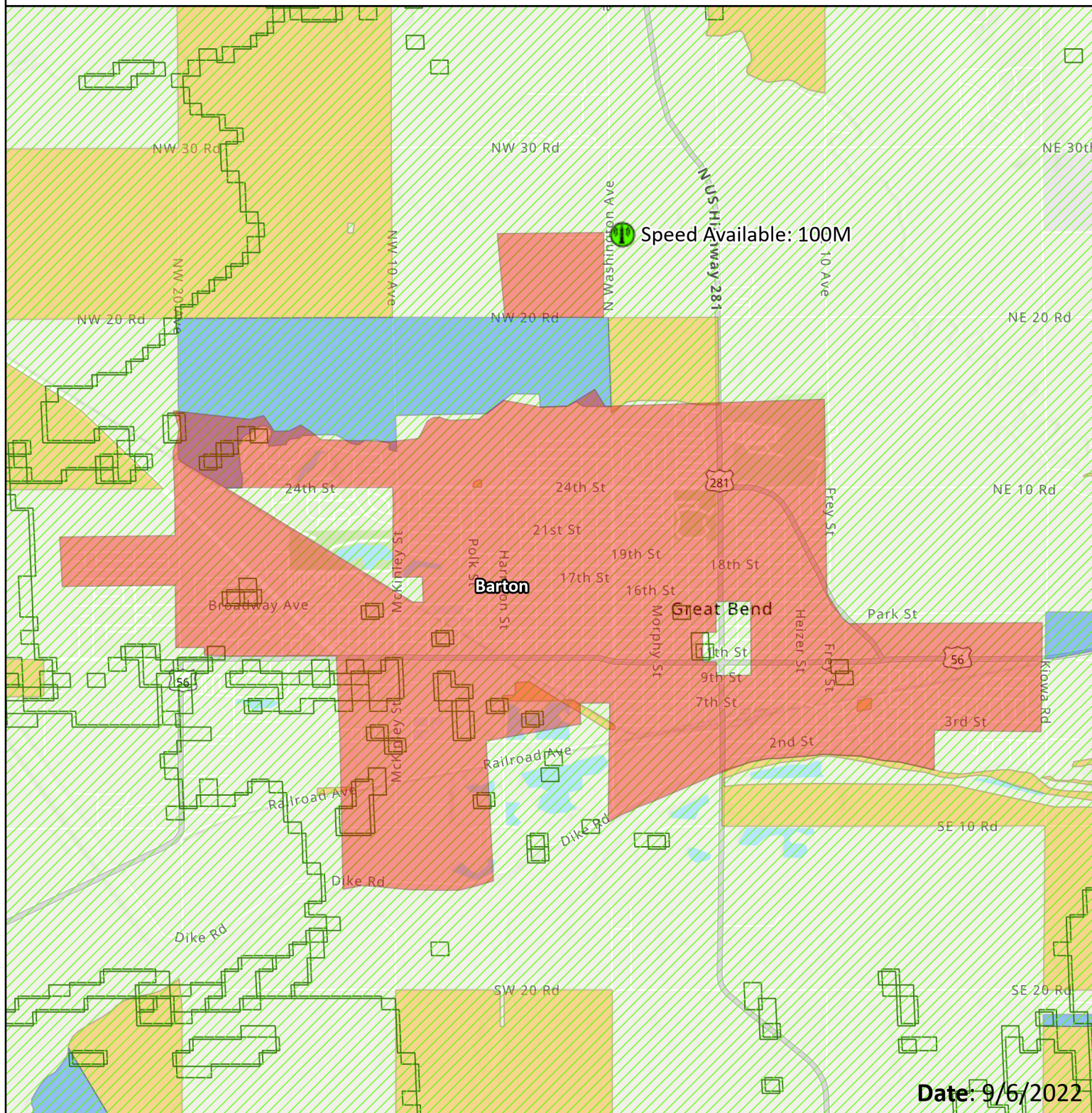


# Kansas CPF Challenge






## 100MB/20MB Service Available



**Applicant: ATT**

**Project: Barton**

Esri, NASA, NGA, USGS, FEMA, Esri, HERE, Garmin, SafeGraph, GeoTechnologies, Inc, METI/NASA, USGS, EPA, NPS, USDA

-  AMG Technology (Nextlink) Active Tower
-  Challenged Project
-  AMG Technology (Nextlink) 100MB/20MB or Higher Active Coverage
-  AMG Technology - RDOF Obligation
-  AMG Technology - CAF Obligation

0 0.4 0.79 1.19 1.58 1.98  
Miles