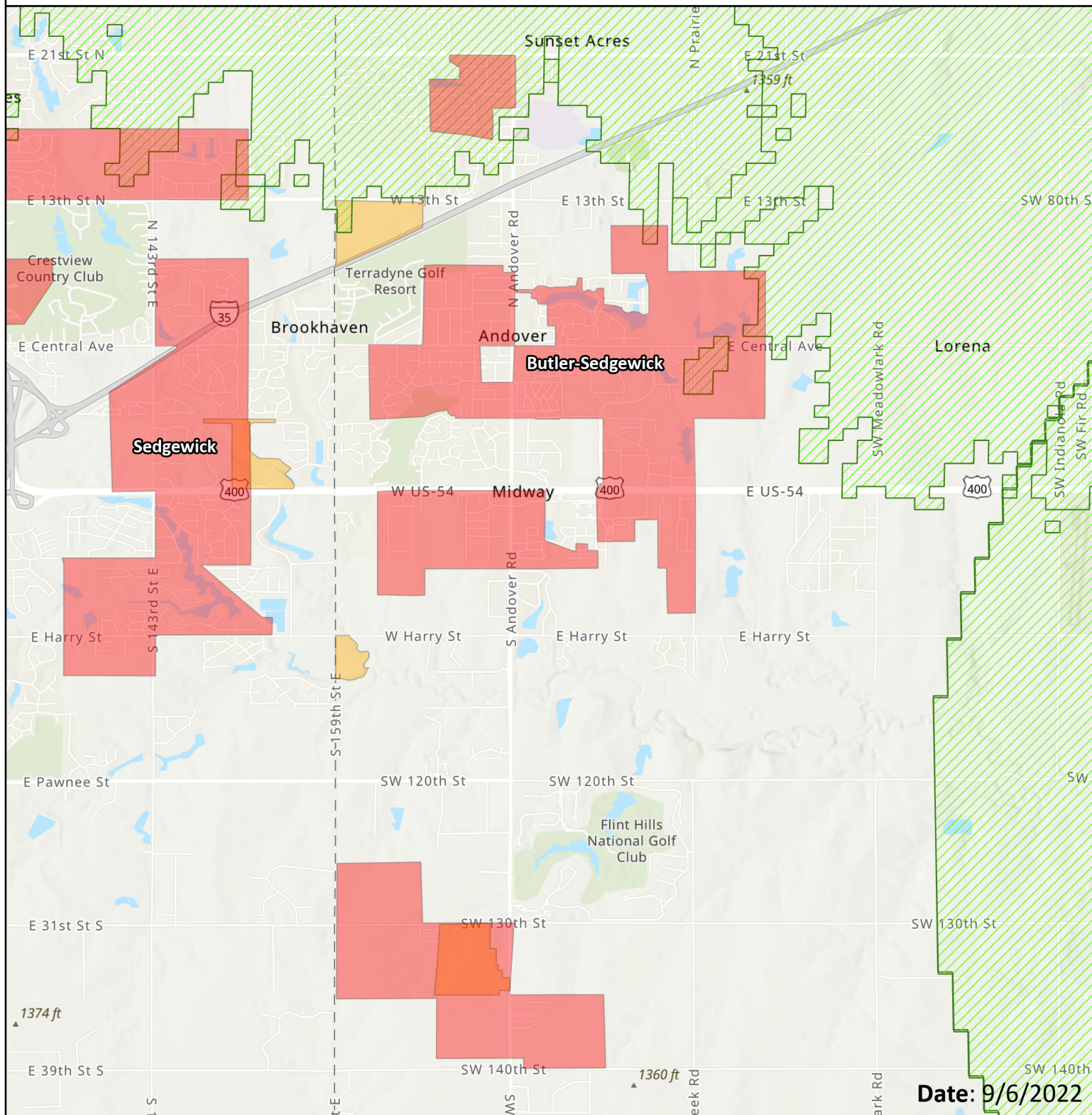


Kansas CPF Challenge






100MB/20MB Service Available



Applicant: ATT

Project: Butler-Sedgewick

Esri, NASA, NGA, USGS, Esri, HERE, Garmin, SafeGraph, GeoTechnologies, Inc, METI/NASA, USGS, EPA, NPS, USDA

-  AMG Technology (Nextlink) Active Tower
-  Challenged Project
-  AMG Technology (Nextlink) 100MB/20MB or Higher Active Coverage
-  AMG Technology - RDOF Obligation
-  AMG Technology - CAF Obligation

