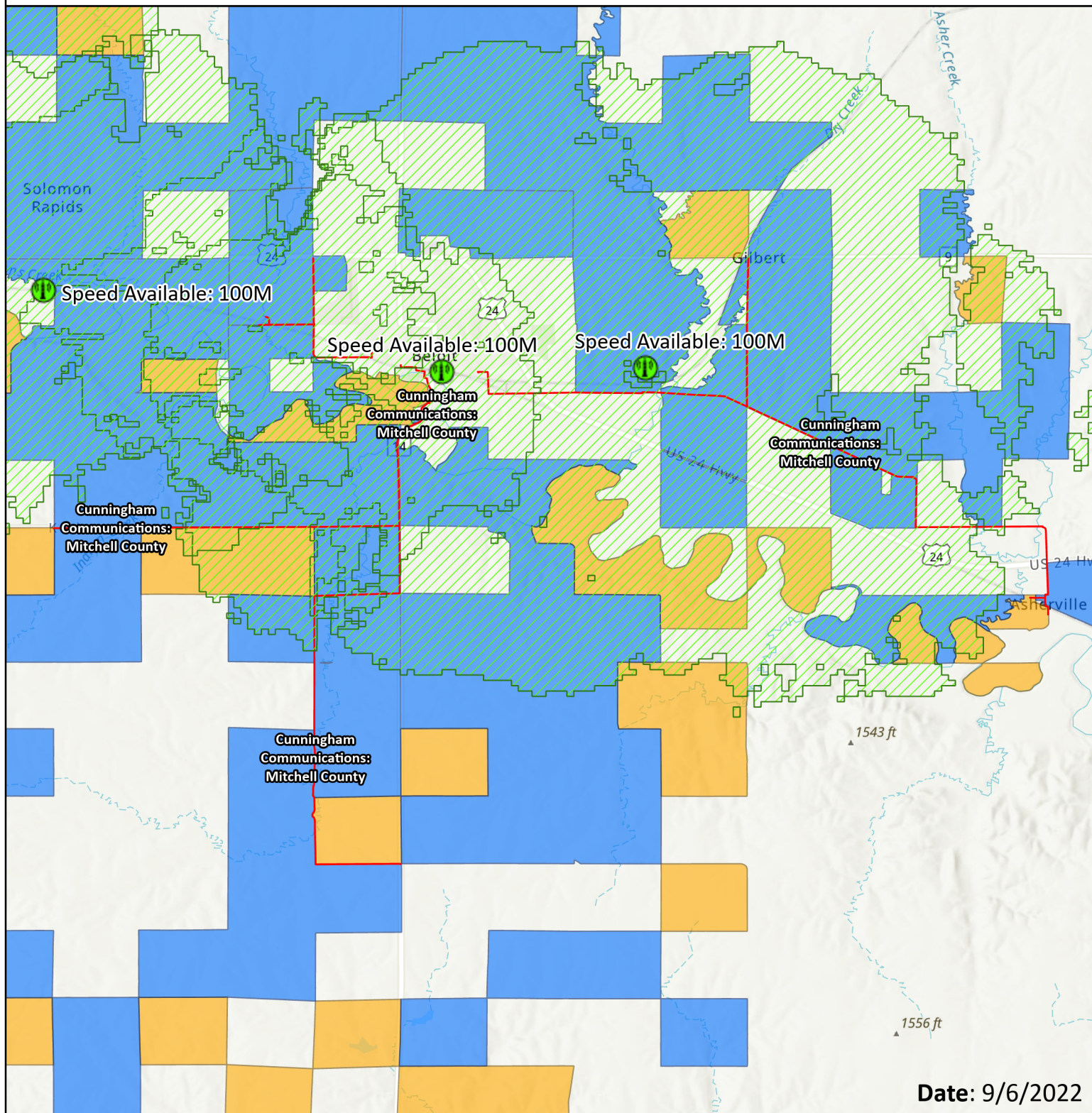


Kansas CPF Challenge

100MB/20MB Service Available



Applicant: Cunningham
Communications
Project: Mitchell County

Esri, NASA, NGA, USGS, Esri, HERE, Garmin, SafeGraph, GeoTechnologies, Inc,
METI/NASA, USGS, EPA, NPS, USDA

- Challenged Fiber Project
- 📶 AMG Technology (Nextlink) Active Tower
- 🟢 AMG Technology (Nextlink) 100MB/20MB or Higher Active Coverage
- 🟦 AMG Technology - RDOF Obligation
- 🟠 AMG Technology - CAF Obligation

