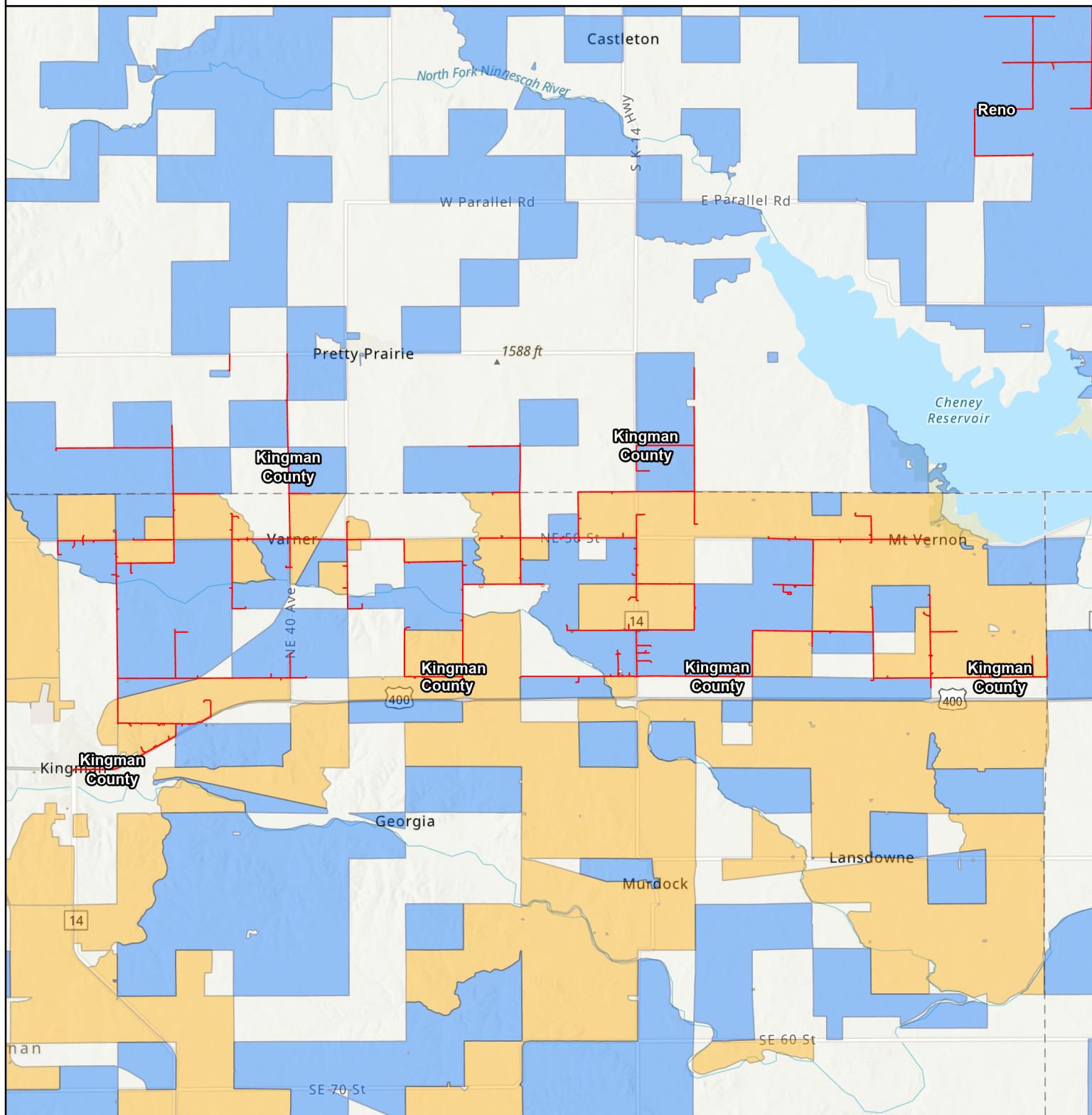


Kansas CPF Challenge Awarded RDOF / CAF II Block



Applicant: IdeaTek

Project: Kingman County

Esri, HERE, Garmin, SafeGraph, METI/NASA, USGS, EPA, NPS, USDA, Esri, CGIAR, USGS

- **Challenged Fiber Projects**
- AMG Technology - RDOF Obligation
- AMG Technology - CAF Obligation

Date: 9/7/2022

0 1.45 2.9 4.35 5.8 7.25
Miles