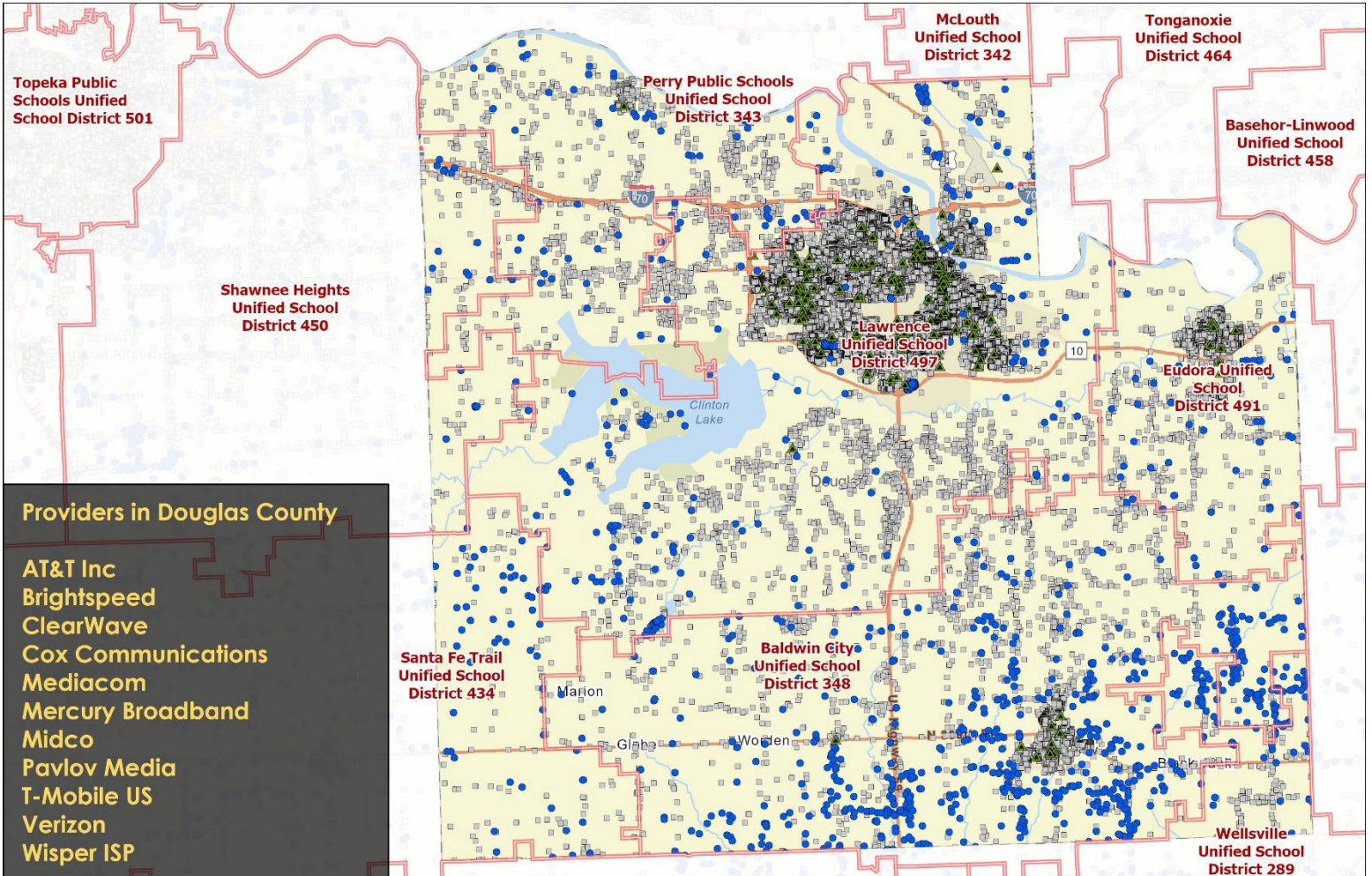


Eligible Funding Locations

BROADBAND MAPS



Providers in Douglas County

- AT&T Inc
- Brightspeed
- ClearWave
- Cox Communications
- Mediacom
- Mercury Broadband
- Midco
- Pavlov Media
- T-Mobile US
- Verizon
- Wisper ISP

Regional Outreach Planning - Served & Unserved Locations Douglas County

Fixed Broadband (Fiber, Cable, Copper, Fixed Wireless)

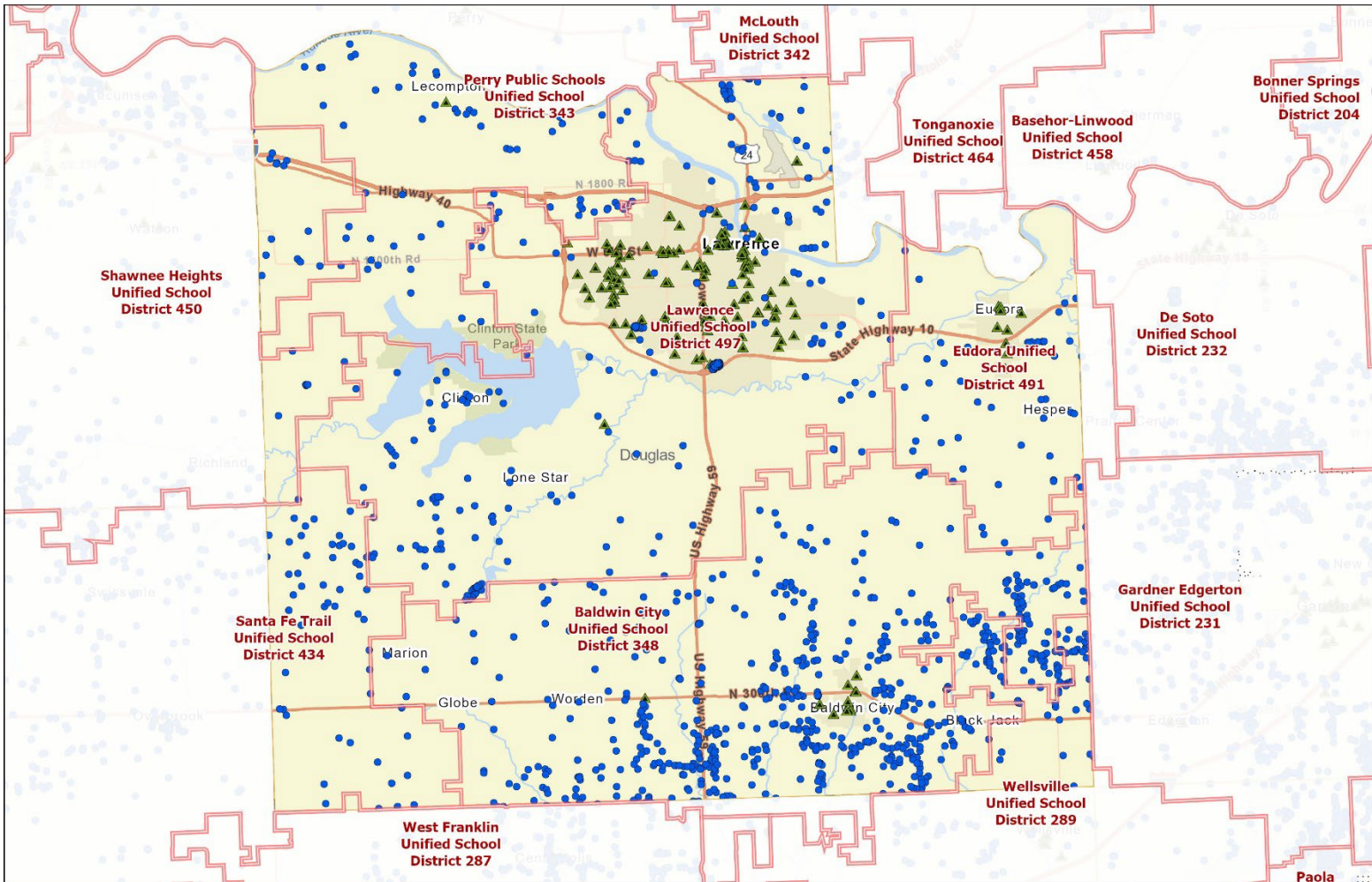
- Eligible for BEAD
Less than 100/20 mbps
- Ineligible for BEAD
100/20 mbps or greater

- Unified School District
- ▲ Community Anchor Institution



Previous Awards Received

BROADBAND MAPS



Regional Outreach Planning - Broadband Grant Areas - Douglas County

Fixed Broadband (Fiber, Cable, Copper, Fixed Wireless)

● Eligible for BEAD
Less than 100/20 Mbps

| | |
|------------------------------|-----------|
| Unified School District | RDOF |
| Community Anchor Institution | CAFII |
| | EACAM |
| | Reconnect |
| | CPF |
| | BAGII |

February 2024

RDOF • Rural Digital Opportunity Fund • A 10 year, \$20.4 billion-dollar Universal Service Fund program that uses reverse auctions to distribute funding to locations in rural areas.

CAF II • Connect America Fund • FCC program that aimed to bring broadband to rural areas that were previously served by large telephone companies but are now considered unserved by broadband.

EACAM • Enhanced ACAM • Extension of ACAM program that increases required speeds to 100/20 along with an increase in monthly payments to carriers.

Reconnect • USDA program that utilizes grants, loan-grant combinations, and low-interest loans to facilitate the construction of broadband infrastructure to unserved rural communities at speeds of 100/20.

CPF • Capitol Projects Fund • \$83.5 million from ARPA, translated into 24 state awarded projects with 25,567 proposed locations passed and total statewide investment of \$125 million.

BAG II • Broadband Acceleration Grant is a 10-year, \$85 million program funded via the Kansas Department of Transportation's Eisenhower Legacy Transportation (IKE) Program. **BAG II** • Awarded \$5 million with 3,018 locations to be passed, included \$6,108,842 in private investment match through BAG II.



**KANSAS
BROADBAND
PLANNING**