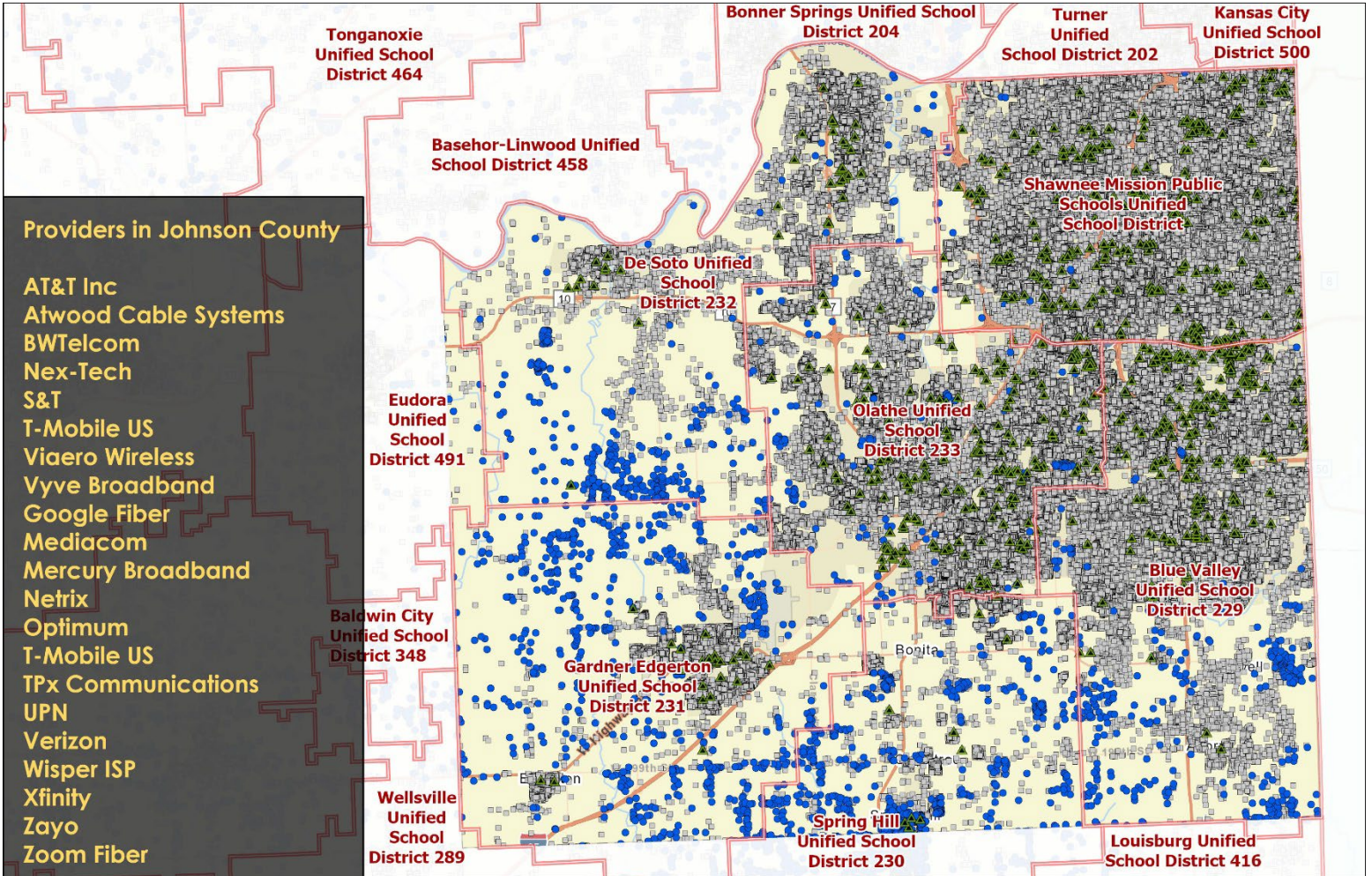


Eligible Funding Locations

BROADBAND MAPS



- Providers in Johnson County**
- AT&T Inc
 - Atwood Cable Systems
 - BWTelecom
 - Nex-Tech
 - S&T
 - T-Mobile US
 - Viaero Wireless
 - Vyve Broadband
 - Google Fiber
 - Mediacom
 - Mercury Broadband
 - Netrix
 - Optimum
 - T-Mobile US
 - TPx Communications
 - UPN
 - Verizon
 - Wisper ISP
 - Xfinity
 - Zayo
 - Zoom Fiber

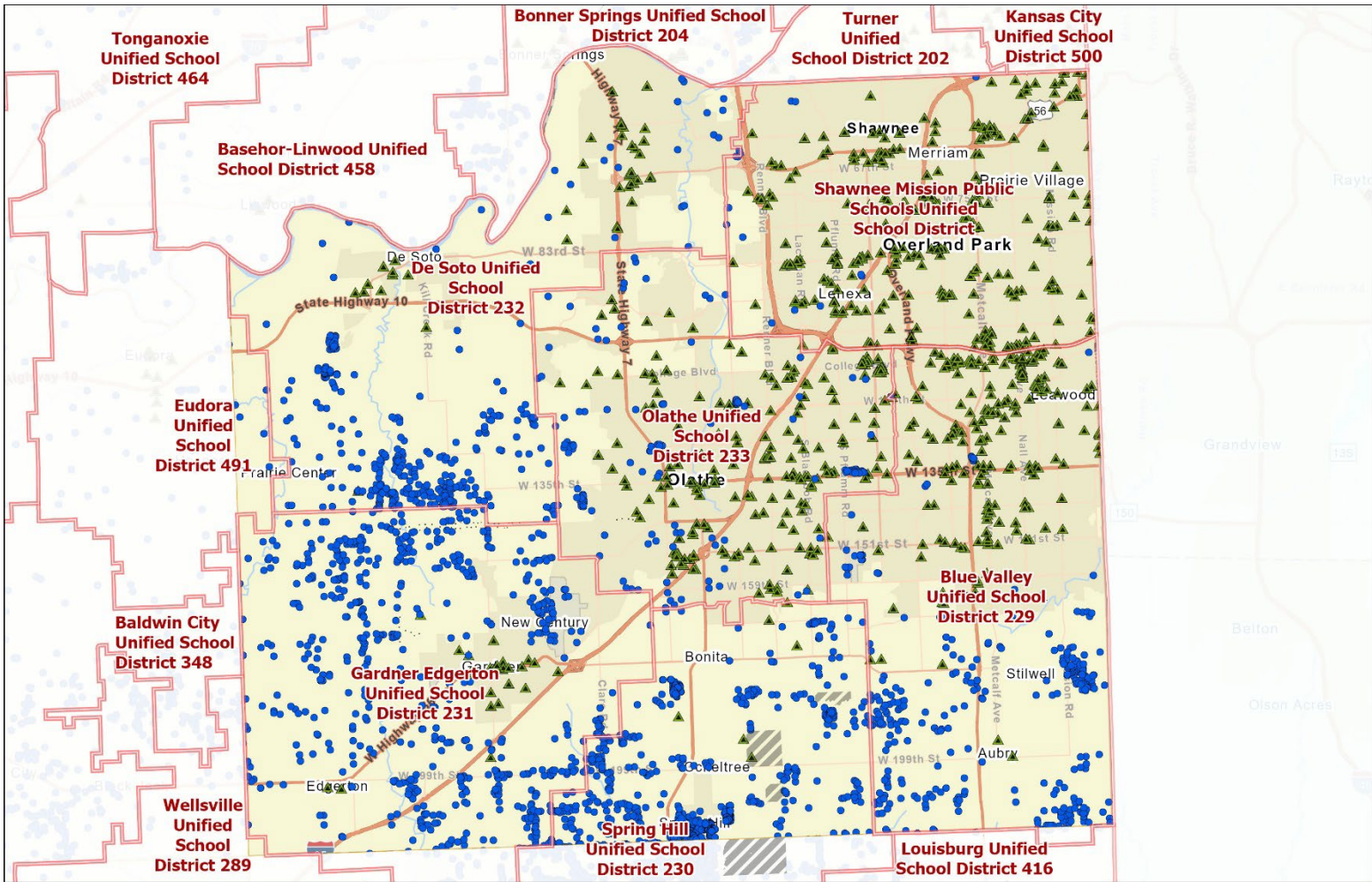
Regional Outreach Planning - Served & Unserved Locations Johnson County

- Fixed Broadband (Fiber, Cable, Copper, Fixed Wireless)
- Eligible for BEAD
Less than 100/20 mbps
- Ineligible for BEAD
100/20 mbps or greater
- ▭ Unified School District
- ▲ Community Anchor Institution

KANSAS BROADBAND PLANNING

Previous Awards Received

BROADBAND MAPS



Regional Outreach Planning - Broadband Grant Areas - Johnson County

Fixed Broadband (Fiber, Cable, Copper, Fixed Wireless)

● Eligible for BEAD
Less than 100/20 mbps

Unified School District	RDOF
Community Anchor Institution	CAFII
	EACAM
	Reconnect
	CPF
	BAGII

February 2024

RDOF • Rural Digital Opportunity Fund • A 10 year, \$20.4 billion-dollar Universal Service Fund program that uses reverse auctions to distribute funding to locations in rural areas.

CAF II • Connect America Fund • FCC program that aimed to bring broadband to rural areas that were previously served by large telephone companies but are now considered unserved by broadband.

EACAM • Enhanced ACAM • Extension of ACAM program that increases required speeds to 100/20 along with an increase in monthly payments to carriers.

Reconnect • USDA program that utilizes grants, loan-grant combinations, and low-interest loans to facilitate the construction of broadband infrastructure to unserved rural communities at speeds of 100/20.

CPF • Capitol Projects Fund • \$83.5 million from ARPA, translated into 24 state awarded projects with 25,567 proposed locations passed and total statewide investment of \$125 million.

BAG II • Broadband Acceleration Grant is a 10-year, \$85 million program funded via the Kansas Department of Transportation's Eisenhower Legacy Transportation (IKE) Program. **BAG II** • Awarded \$5 million with 3,018 locations to be passed, included \$6,108,842 in private investment match through BAG II.

