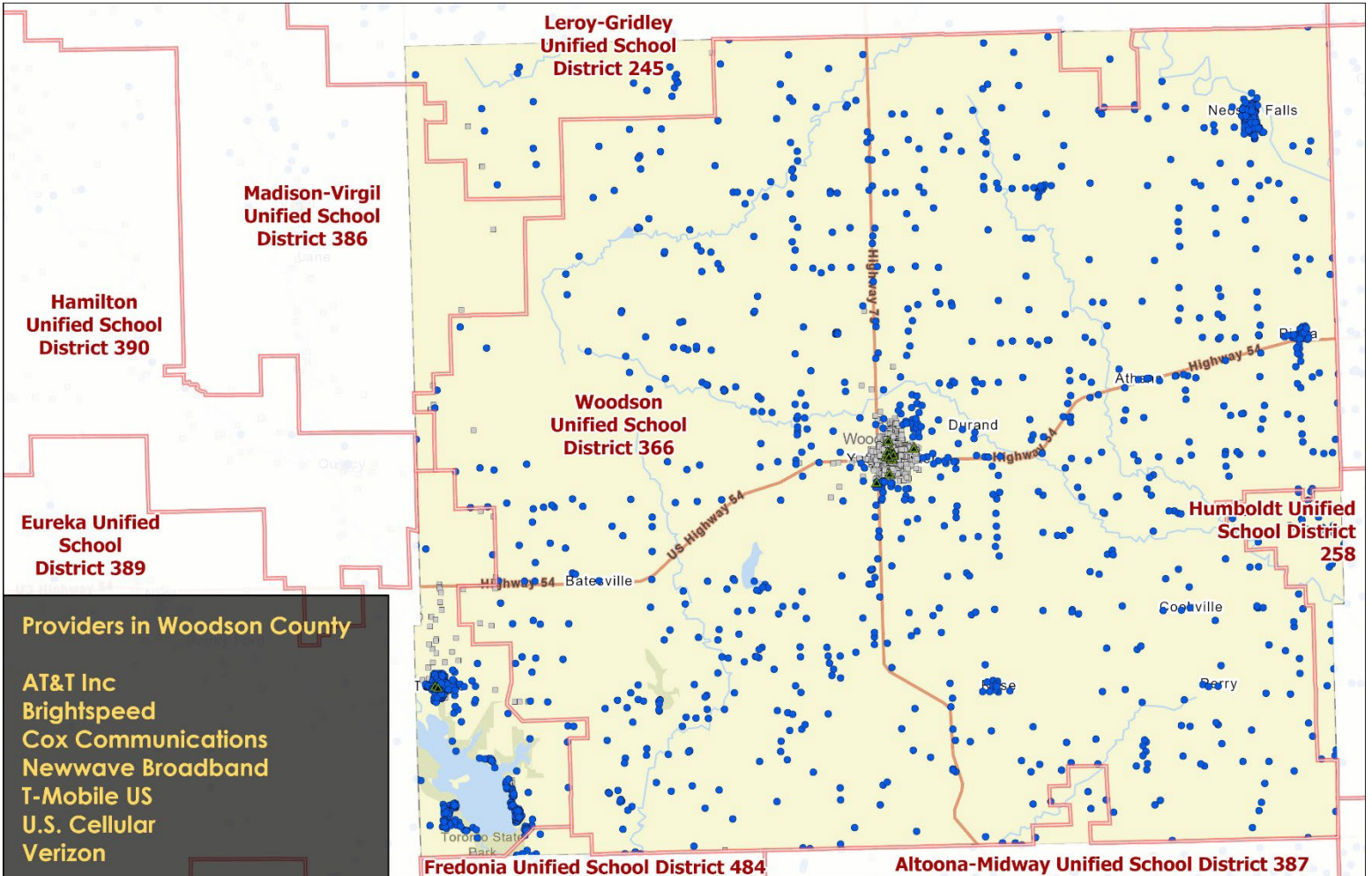


# Eligible Funding Locations

# BROADBAND MAPS



### Providers in Woodson County

- AT&T Inc
- Brightspeed
- Cox Communications
- Newwave Broadband
- T-Mobile US
- U.S. Cellular
- Verizon

## Regional Outreach Planning - Served & Unserved Locations Woodson County

Fixed Broadband (Fiber, Cable, Copper, Fixed Wireless)

● Eligible for BEAD  
Less than 100/20 mbps

□ Ineligible for BEAD  
100/20 mbps or greater

- Unified School District
- Community Anchor Institution

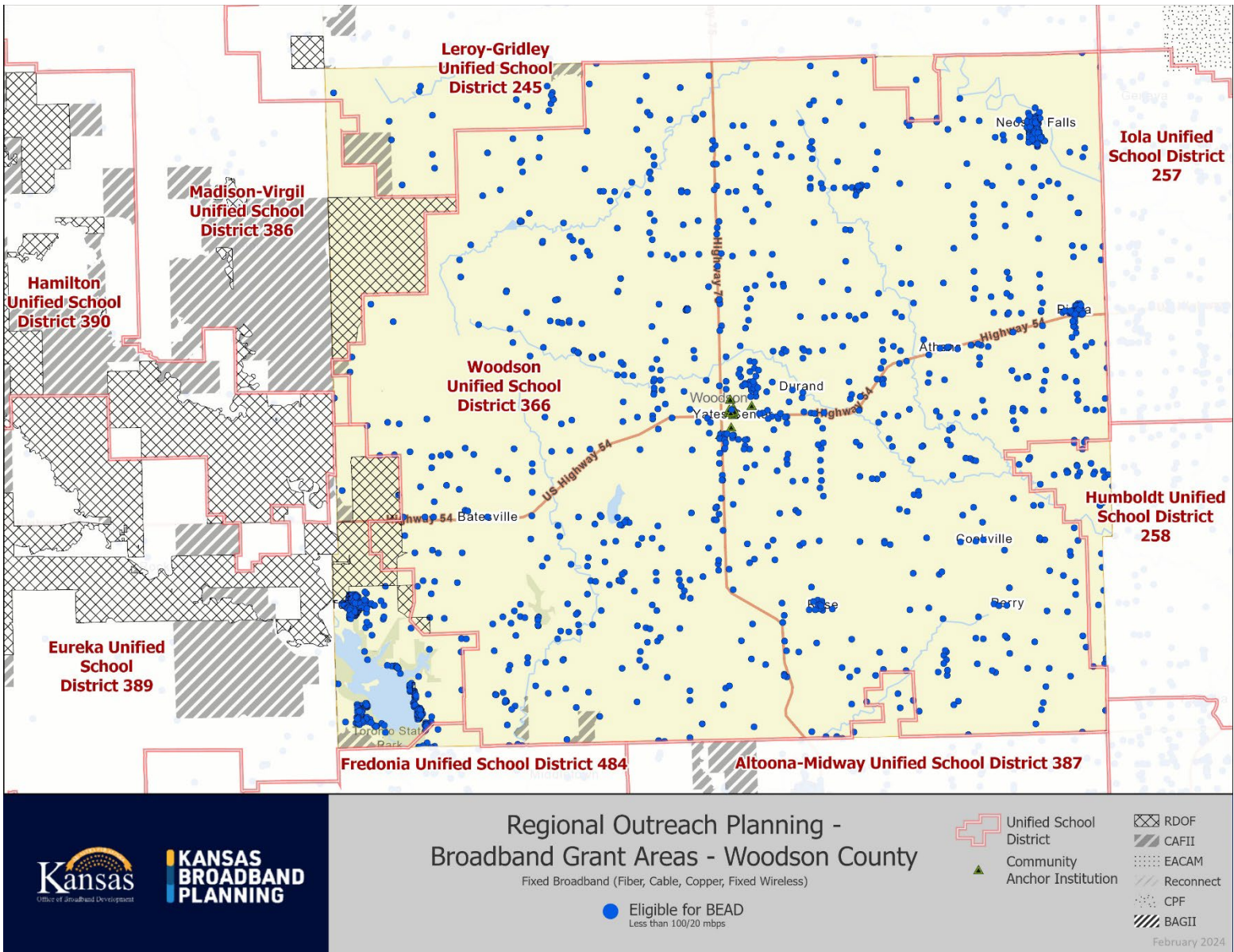
February 2024





# Previous Awards Received

# BROADBAND MAPS



**RDOF** • Rural Digital Opportunity Fund • A 10 year, \$20.4 billion-dollar Universal Service Fund program that uses reverse auctions to distribute funding to locations in rural areas.

**CAF II** • Connect America Fund • FCC program that aimed to bring broadband to rural areas that were previously served by large telephone companies but are now considered unserved by broadband.

**EACAM** • Enhanced ACAM • Extension of ACAM program that increases required speeds to 100/20 along with an increase in monthly payments to carriers.

**Reconnect** • USDA program that utilizes grants, loan-grant combinations, and low-interest loans to facilitate the construction of broadband infrastructure to unserved rural communities at speeds of 100/20.

**CPF** • Capitol Projects Fund • \$83.5 million from ARPA, translated into 24 state awarded projects with 25,567 proposed locations passed and total statewide investment of \$125 million.

**BAG II** • Broadband Acceleration Grant is a 10-year, \$85 million program funded via the Kansas Department of Transportation's Eisenhower Legacy Transportation (IKE) Program. **BAG II** • Awarded \$5 million with 3,018 locations to be passed, included \$6,108,842 in private investment match through BAG II.