

# Grant Writing

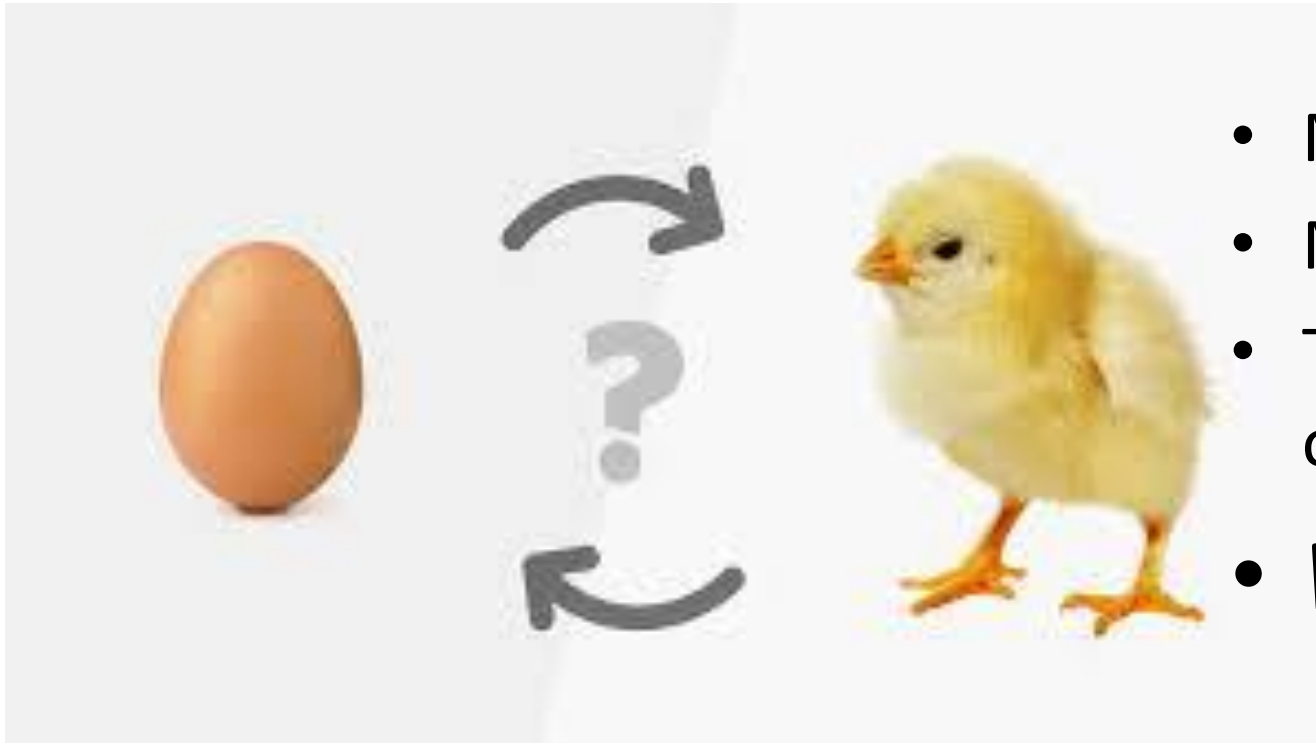
*Let's Get to Work!*



---

Nancy Daniels, Community Vitality Specialist

[nkdaniels@ksu.edu](mailto:nkdaniels@ksu.edu)  
785.410.6352



- My community has X project.
- My community has Y idea.
- There's a grant for Z, is this an opportunity for my community?
- ***Where do we start?***

- **Director of Success By 6 for United Way of Greater Topeka**
  - A collaboration of community agencies and individuals
  - United Way finance staff provided grant administration
  - 120 agencies and organizations with 6 Action Teams
  - Mission: To create a community where every child had the keys to success by the age of 6.
- **Executive Director, Big Brothers Big Sisters of Topeka**
  - Non-profit entity with 10 staff
  - My role: Director, HR, Fund Raiser and bookkeeper.

- Success By 6 began in 1993.
- Pooled resources/common vision:
  - To create a community where every child has the keys to a successful life by age 6.
- Grants made us flourish.

*“The best time to make friends is before you need them.”*

Ethel Barrymore, Actor



**You miss 100% of the shots you don't take.**

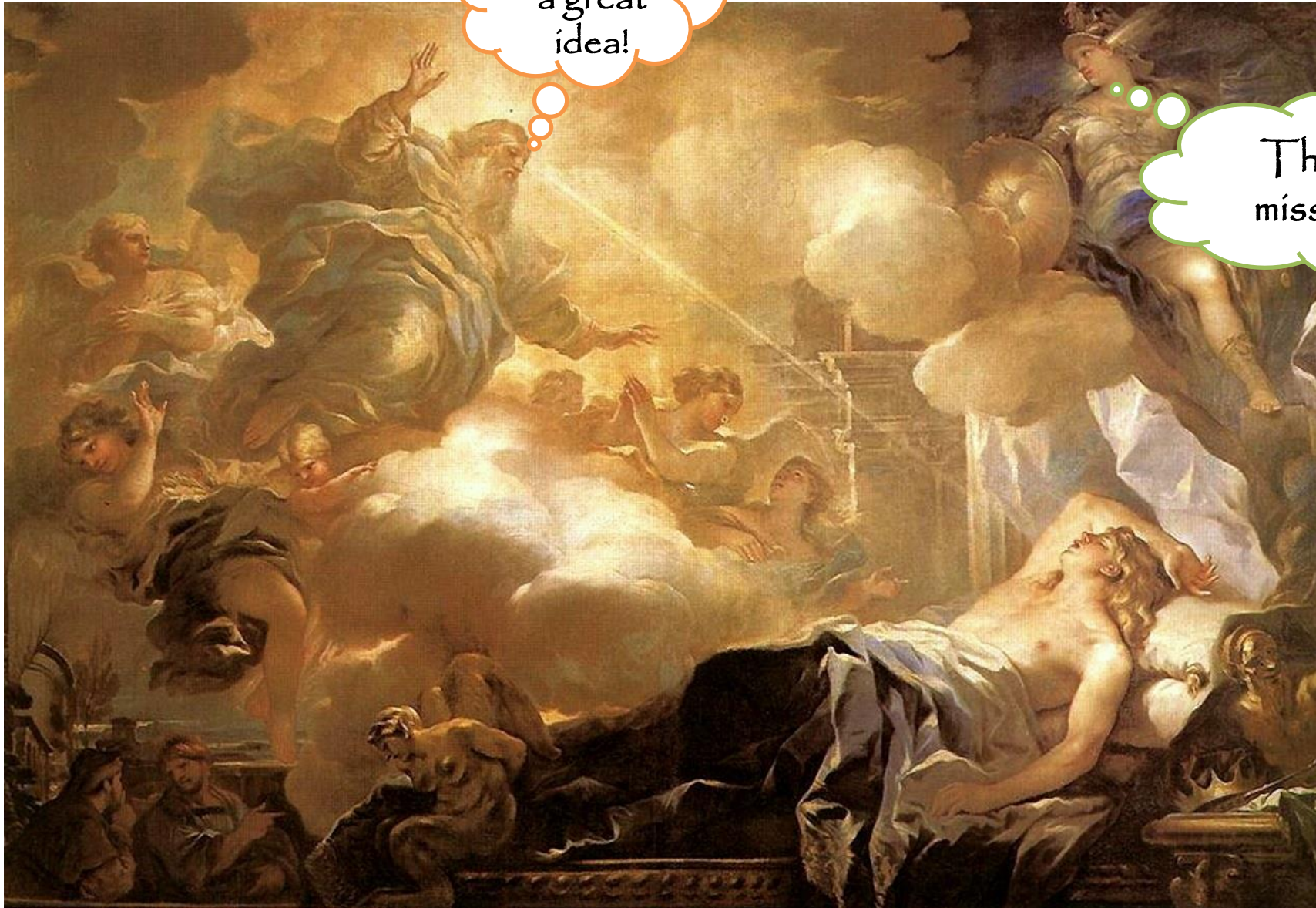
*-Wayne Gretzky*



- Office of Rural Prosperity
- Department of Commerce
- KDHE
- Kansas Housing Resources Corporation
- Bipartisan Infrastructure Law (BIL)
- Kansas Build (matching money for BIL!)
- K-State Research & Extension

Here's  
a great  
idea!

That's our  
mission too!





I have talent,  
ask me!

I have time to  
help

I have an  
idea too!

Here's a  
great  
idea!

Get my  
checkbook,  
honey.

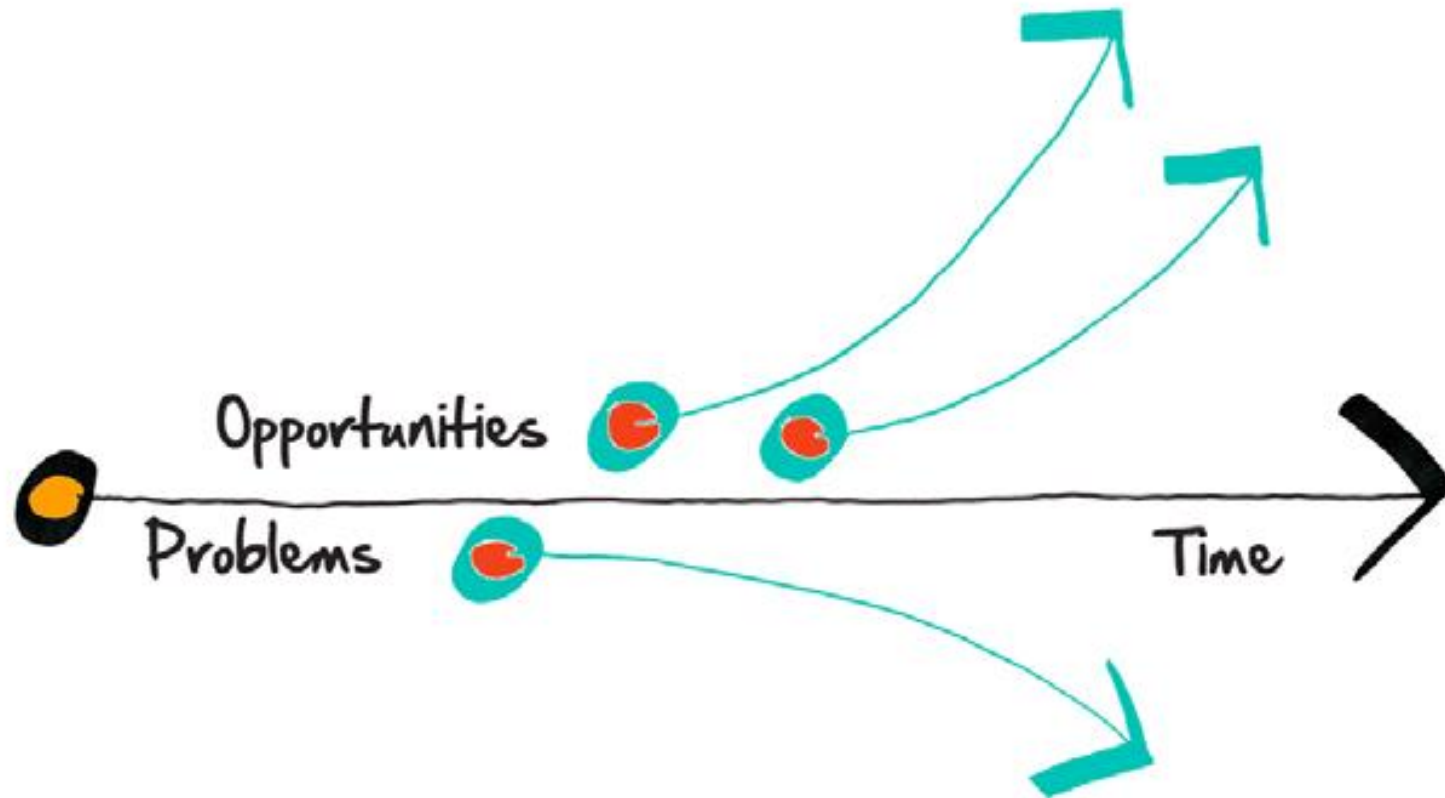
That's our  
mission too!

That will never  
work!



# Asset Based Community Development

People move in the direction of their conversations



- **Just Start**

- **The hardest part isn't grant writing; the hardest part is a plan.**

- ✓ What is the problem or opportunity here?

- ✓ What change is possible?

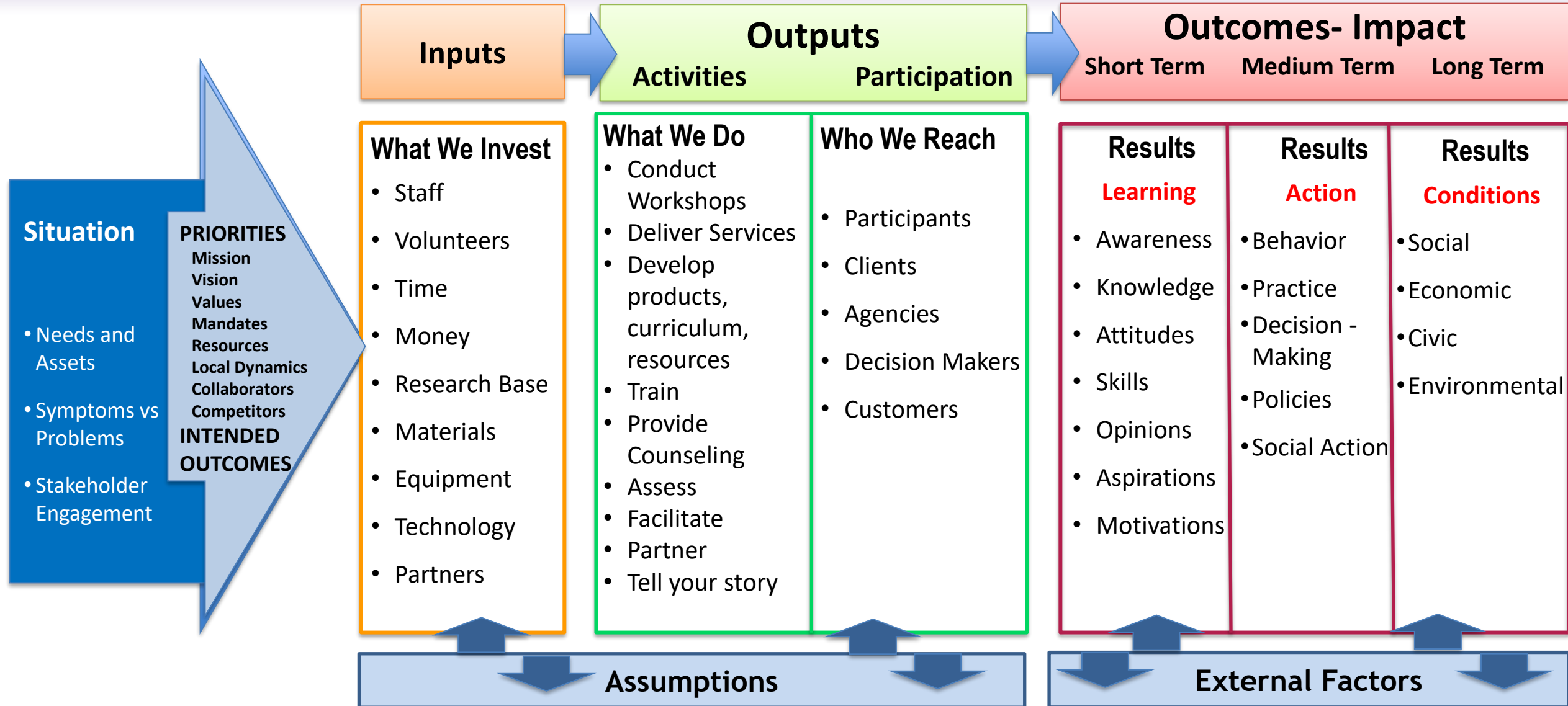
- ✓ What will we do?

- ✓ How will we measure success?

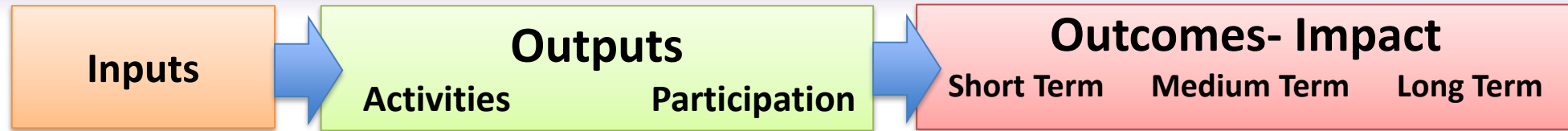
*“Sometimes when you chase your dreams, you catch them.”*

*Steve Radley II*

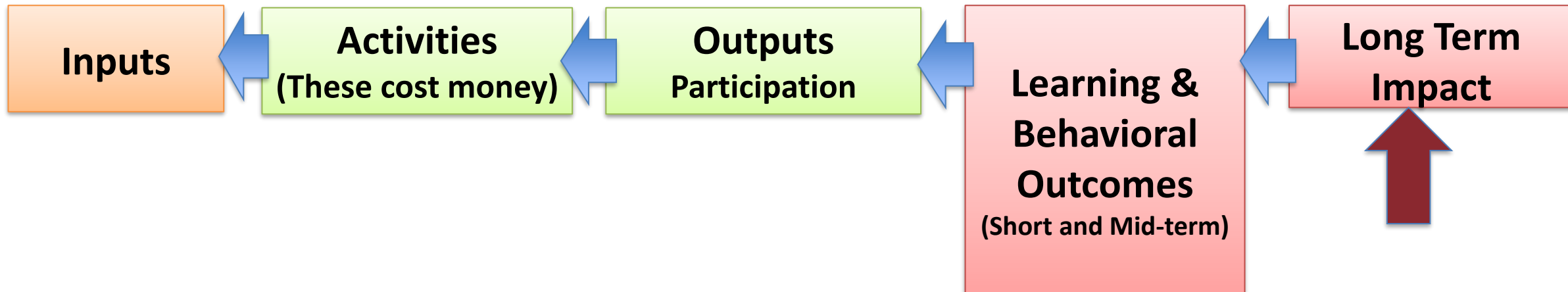




# Program Action -- Logic Model



...But you design from right to left





**Sometimes you start with your project**  
– “Our park needs new equipment.”

**Sometimes you start with a vision**

– “To create a community where every child has the keys to success by age 6.”





We need new park equipment.



**Big Enough to Matter**  
**Small Enough to Do**

To create a community where every child has the keys to a successful life.



- **SAM** – System for Award Management (Do first)  
<https://sam.gov/content/home>
- **UEI** – Unique Entity Identifier – required to apply
- **Start Early** – Can take 2-3 weeks
- **Mandatory**
- **Grants.gov** – Where all Federal grants are posted, searchable
  - Create login and profile
  - Will also need a government login account



**The quality of thought you give to budget preparation produces a better program and increases your chances of being funded.**

**If the funding capacity is bigger than your idea, add a bigger region or more partners!**





**An Investment:**

in achieving the funder's goals.

**A Formal Partnership**

for the purpose of producing change.



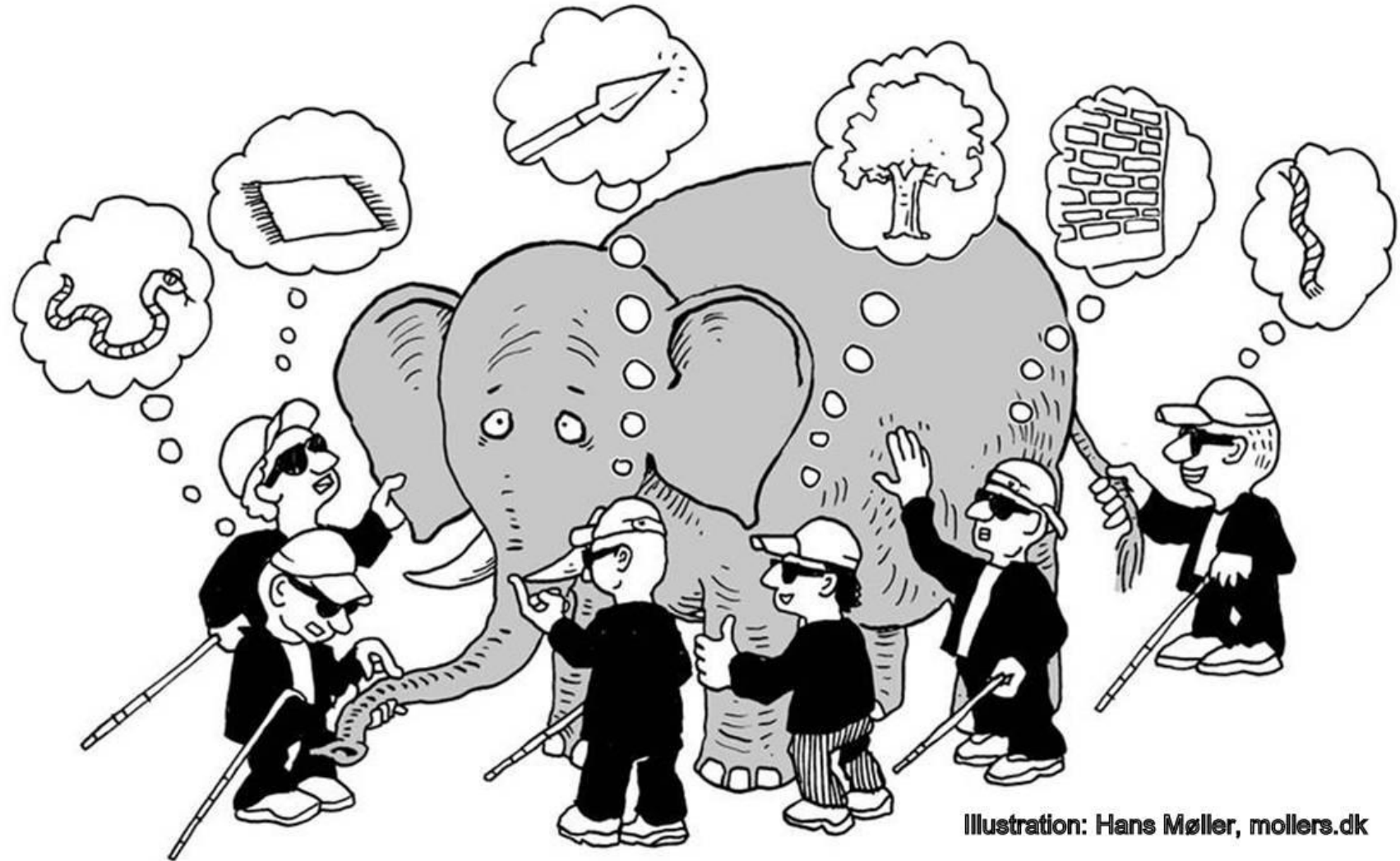
## Why do you need data?

- 1.To document the scope of the problem.
- 2.To tell “Why is this important?”
- 3.To describe your service area.
- 4.To develop new strategies.
- 5.Other?

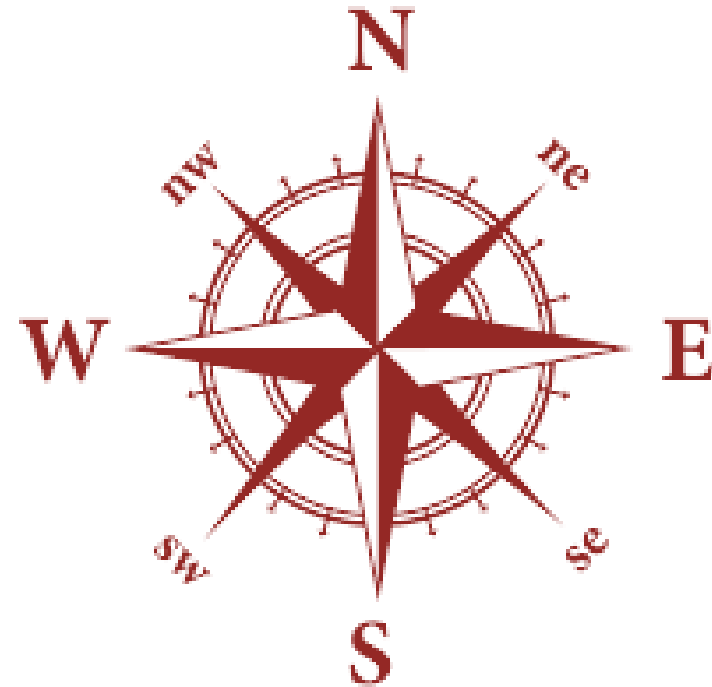


It's hard to remember "what do I need to describe that I'm not telling them?"

If you are shy to show your writing to others, the only ones who review it will be the people who decide if you get money.



- Focus on the **beneficiaries**- not on the applicant organization.
- Provide **evidence** that the problem exists in the service area.
- Involve those affected in designing it.



**Outcomes:** are the expected benefits a program will produce during the grant funding period.


The connection between the problem and the expected outcomes must be direct.

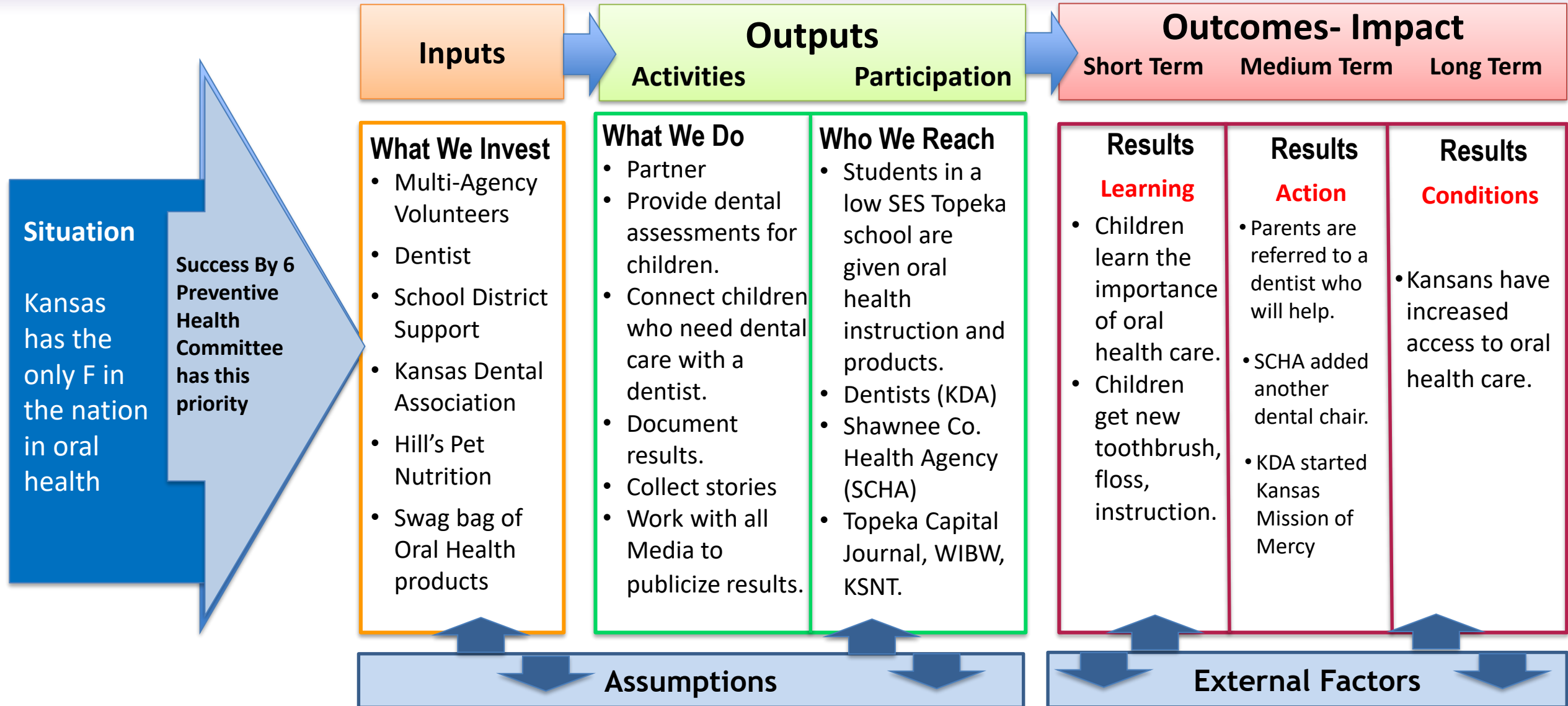


- **Behavioral**
  - Human action that is anticipated
- **Performance**
  - A specific proficiency level is expected
- **Process**
  - The way something occurs is an end in itself
- **Product**
  - A tangible item results





<b>PROBLEM</b> <i>leads to</i> 	<b>OUTCOME</b>
Children have poor reading skills	Reading skills improve
A high percentage of those who return to the community from prison go back to prison	Decrease in Recidivism



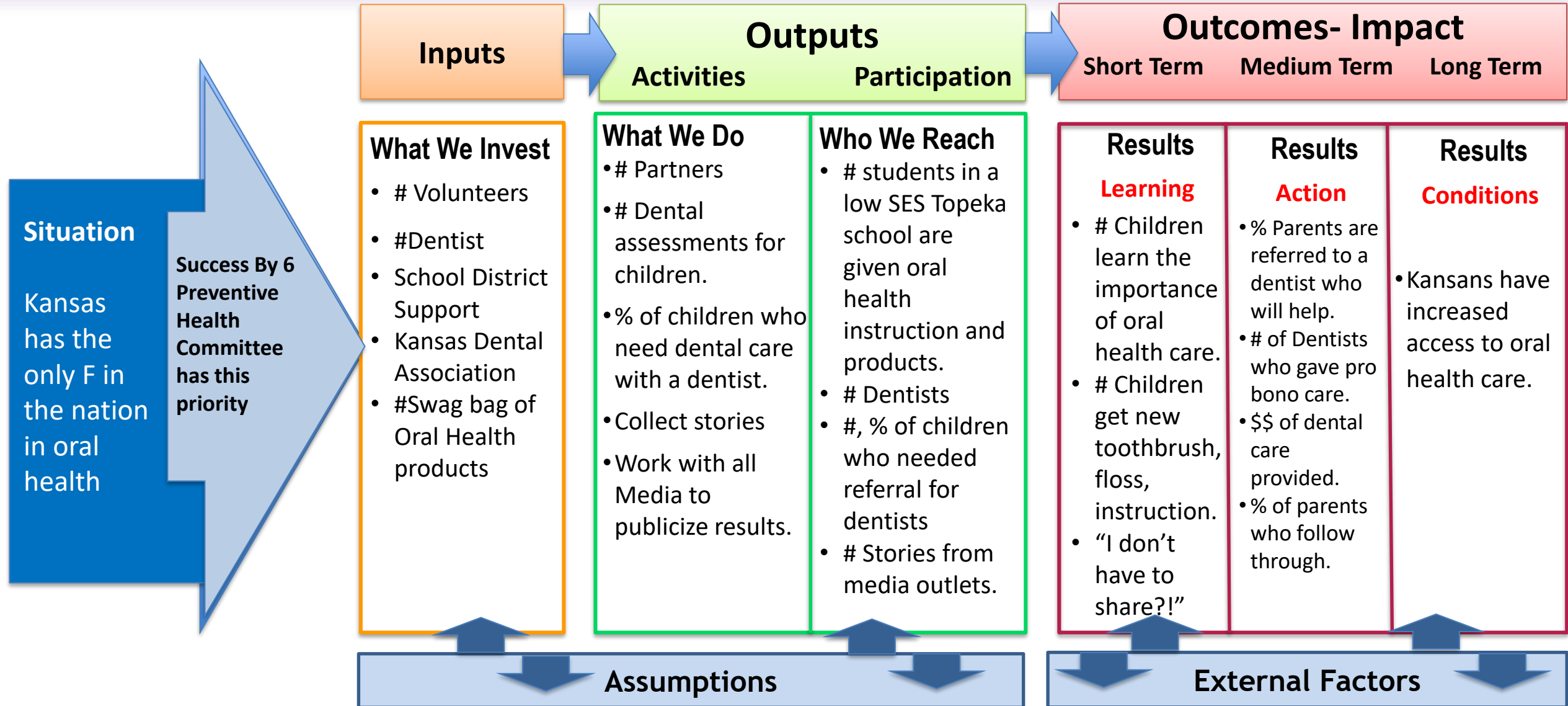
A good evaluation is

An essential part of planning a program and may begin before the program is launched.

Right-sized: appropriate for the scope of the program

Systematic

Integrated with Program Activities



Major tasks the program will complete.

- Activities cost money and form the basis for the budget.
- If it's in the narrative, it should be in the budget.



## Spectrum of Evidence-Based



<p>Sound idea with rationale</p>	<p>Promising or best practice with some evaluation evidence</p>	<ul style="list-style-type: none"><li>• Evidence-based</li><li>• Solid evaluation data shows it is effective.</li></ul>	<ul style="list-style-type: none"><li>• Science/Research based model</li><li>• Solid evaluation using control groups</li><li>• Replicable results</li></ul>
----------------------------------	---	---	---

## Are they SMART?

- S**pecific
- M**easurable
- A**chievable
- R**elevant
- T**ime-limited

## GENERAL INFORMATION FOR PARSONS AREA COMMUNITY FOUNDATION GRANTS

2024 Grant Applications may now be submitted with deadline of midnight January 31, 2024.

The Community Foundation is a unique charitable organization established to benefit the residents of Parsons and the surrounding area... within a 25-mile radius of Parsons.

Program areas: Arts and culture, education, health, parks and recreation, social services, or civic improvements and affairs.

Elements we are looking for:

1. A program or project positively impacting local citizens and/or the community
2. Programs that develop competencies, skills, and healthy habits enabling individuals to live fuller, more productive and healthy lives
3. A proposal that addresses a significant need affecting a broad segment of our population or special population
4. Promotes the cooperation of two or more agencies to avoid duplication of services
5. Organizations demonstrating the capacity to provide the necessary services with good administrative and financial management
6. Evidence of support from volunteers and in-kind resources to sustain the program

In the past, approximately 25 grants have been awarded each year, ranging from \$500 to \$50,000. However, the typical grant amount is in the \$1000 to \$5000 range. Grant proposals showing either internal fundraising efforts or collaboration with other organizations are generally viewed more favorably than those proposals asking PACF for the entire amount of funding necessary to complete their project.










- **[The Foundation Directory Online](#)** (aka “Candid”)
  - Johnson County Library
  - Lawrence Public Library,
  - Kansas City, MO Public Library,
  - McPherson Community Foundation,
  - Phillipsburg Community Foundation,
  - Salina Public Library
  - Topeka and Shawnee County Public Library
  - Wichita Public Library



## The Foundation Directory

- A source for finding grants and training

 VIDEO <b>First Fundraising Strategies for Startup Organizations</b> Tom O'Brien, Program Manager of Neighborhood Connections at The Cleveland Foundation, will present ways that organizations can bring in their first dollars and begin to fundraise for their future. <a href="#">Fundraising</a> <a href="#">Starting a Nonprofit</a>	Beginner	Free <a href="#">Watch</a>
 VIDEO <b>Grantseeking Basics for Individuals in the Arts</b> <a href="#">Fundraising</a> <a href="#">Proposal Writing</a>	Beginner	Free <a href="#">Watch</a>
 VIDEO <b>Before You Seek a Grant: A Checklist for New Nonprofits</b> <a href="#">Fundraising</a> <a href="#">Proposal Writing</a>	Beginner	Free <a href="#">Watch</a>
 VIDEO <b>Legal Essentials of Starting a Nonprofit Organization</b> Learn how to draft the certificate of incorporation, hold organizational meetings, adopt bylaws, and apply to the Internal Revenue Service for 501(c) (3) status. <a href="#">Fundraising</a> <a href="#">Foundation Giving</a> <a href="#">Proposal Writing</a>	Beginner	Free <a href="#">Watch</a>
 VIDEO <b>Can My Business Be a Nonprofit?</b> You have a socially-minded business idea. Should you start a nonprofit? This recorded webinar will give you guidance to answer this question. <a href="#">Fundraising</a> <a href="#">Foundation Giving</a> <a href="#">Proposal Writing</a>	Beginner	Free <a href="#">Watch</a>
 SELF-PACED LEARNING <b>Introduction to Finding Grants</b> <a href="#">Fundraising</a> <a href="#">Foundation Giving</a> <a href="#">Find Foundation Donors</a>	Beginner	Free <a href="#">Login to Enroll</a>
 VIDEO <b>Introduction to Proposal Writing</b> <a href="#">Fundraising</a> <a href="#">Foundation Giving</a> <a href="#">Proposal Writing</a>	Beginner	Free <a href="#">Watch</a>

- **PIVOT**- a K-State search site for faculty and agents.
- Contact **KSRECV@KSU.EDU** and we'll search for you.

*“It doesn't take a PhD grant writer with perfect sentence structure and format. It just take one person with temerity and tenacity.”*

-Dorothy Bryan  
Auburn City Council President and “Grey-Haired Widowed Sister”

## We're here to help!

**K-STATE**  
Research and Extension

### 5 GRANT WRITING RESOURCES

K-State Research and Extension provides resources to help you write and submit successful grant proposals to improve lives, livelihoods and communities across Kansas.

- 1 ONLINE GRANT WRITING CLASSES**  
Class alum reported receiving \$42 million in successful grants.
- 2 A PROFESSIONAL LEVEL GRANT DEVELOPMENT AND MANAGEMENT COURSE**  
An 8-week course dedicated to helping you complete a fundable proposal.
- 3 A LIST OF CONTRACT GRANT WRITERS**  
Professionals willing and ready to write grants on a contract basis.
- 4 SUPPORT FOR KANSAS COMMUNITY EMPOWERMENT COMMUNITIES**  
Excellent resources for those wanting to bring more to their communities.
- 5 ONE-ON-ONE SUPPORT BY K-STATE RESEARCH AND EXTENSION PROFESSIONALS**  
Our professionals are prepared to help you find grants and review your grant proposals.

Contact email [KSRECV@k-state.edu](mailto:KSRECV@k-state.edu)

2017 | Revised Nov 2018



## This training was based upon:

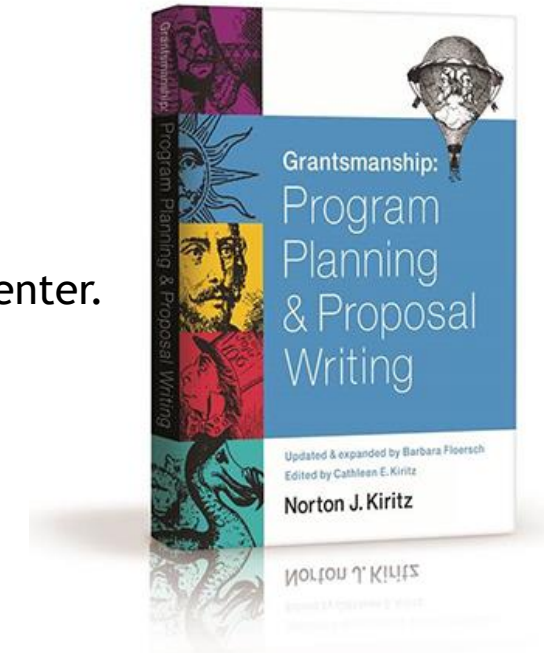
- **Program Logic Models- University of Wisconsin Extension**

<http://fyi.uwex.edu/programdevelopment/logic-models/>

- **The Grantsmanship Center**

Kiritz, N. J., Floersch, B., & Kiritz, C. E. (2014).

*Grantsmanship: Program planning & proposal writing*. Los Angeles: Grantsmanship Center.



*Nothing* in this world can take the place of persistence.

Talent will not; nothing is more common than unsuccessful men with talent. Genius will not; unrewarded genius is almost a proverb. Education will not; the world is full of educated derelicts. Persistence and determination alone are omnipotent.

- *Calvin Coolidge, American President*