



EDA Overview

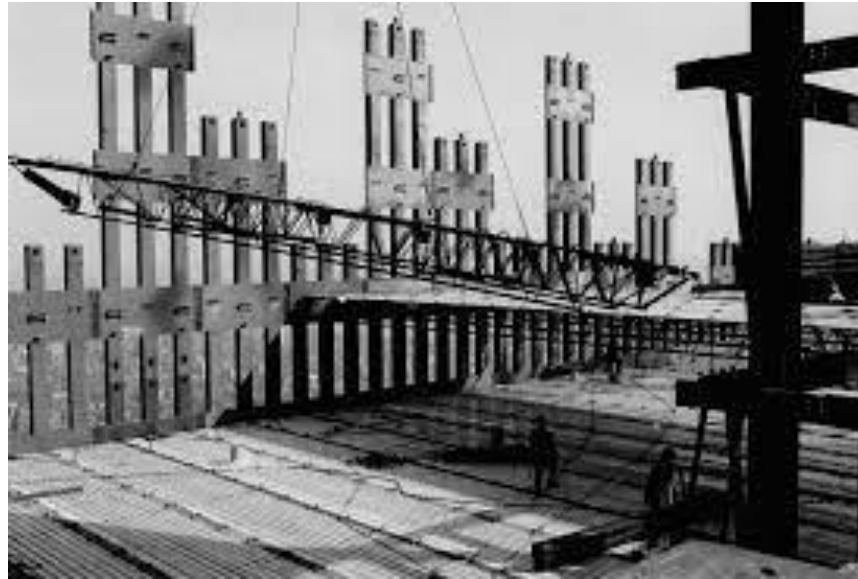
Kansas Rural Prosperity Conference

April 16, 2024

McPherson, KS

EDA–U.S. Economic Development Administration

Started in 1965 as a public works agency....



EDA–Mission Statement

“Lead the federal economic development agenda by promoting innovation and competitiveness, preparing American regions for growth and success in the worldwide economy.”



- Infrastructure (including broadband)
- Economic Recovery (i.e. Disaster)
- Incubators, Innovation Centers
- Technical Assistance and Planning
- Capital Investments and RLFs
- Workforce Development
- Capacity Building and Planning

Groundbreaking for KS Institute of Diesel Technology expansion at Northwest KS Technical College.

EDA Impact in Kansas

- From FY 2019-2022, EDA invested almost **\$98 million** in Kansas.
- More than 8,600 jobs, more than \$2 billion in capital investment.
- Funding investments in Economic Development Districts, public works, travel and tourism, RLFs, incubators, and a Build Back Better finalist!
- South Kansas Coalition (Wichita State), KU Innovation Park, K-State Technology Development Institute, NWKTC and Dodge City wastewater treatment center (Hilmar expansion).



EDA Impact in Kansas continued

PROGRAM	# OF GRANTS	EDA FUNDS
FY 2019 Disaster Supplemental Awards	3	\$11,400,000
CARES Partnership Planning Awards	7	\$2,750,000
CARES Revolving Loan Fund Awards	5	\$4,700,000
CARES Act University Center Funding	2	\$600,000
CARES Economic Adjustment Assistance Awards	6	\$12,100,000
Kansas Non-Competitive ARPA State Planning Grant	1	\$1,000,000
Kansas Non-Competitive ARPA Travel and Tourism Grant	1	\$3,500,000
ARPA Build Back Better Phase I Planning Grant (South KS Coalition)	1	\$500,000
ARPA Build Back Better Finalist Grant (South KS Coalition)	4	\$51,400,000
ARPA Economic Adjustment Assistance & Travel and Tourism Awards	5	\$9,800,000
Grand Total	35	\$97,750,000

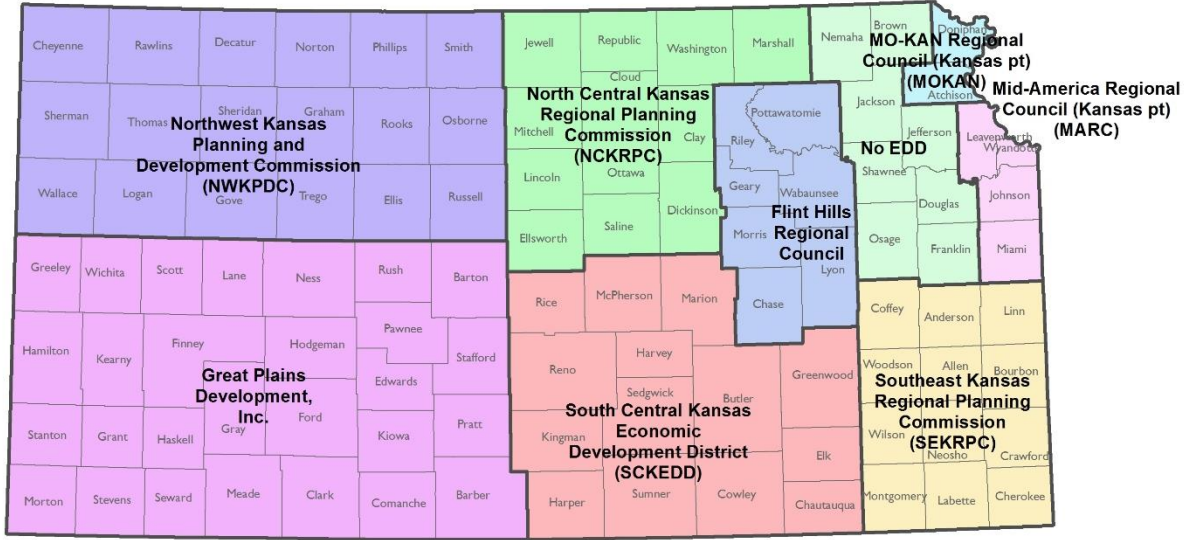
EDA Regions



Denver Region:

- Kansas
- Missouri
- Colorado
- Iowa
- Nebraska
- North Dakota
- South Dakota
- Utah
- Wyoming
- Montana

Economic Development Districts



Current EDA Funding Opportunities

- Public Works-Economic Adjustment Assistance for FY 2024
- Technical Assistance and Short-Term Planning
- FY 2023 Disaster Supplemental (Funds still available but processing time limited)

Completed Competitions:

- University Center Program (K-State TDI continues as a UC until 2028)
- Regional Innovation Technology Hubs (“Tech Hubs”) (Kansas City BioNexus Hub)
- Recompete Pilot Program (No Kansas Applicants)

Open again next year:

- STEM Challenge (opening soon)
- Build to Scale (opening soon)



Eligible Entities for EDA Funding

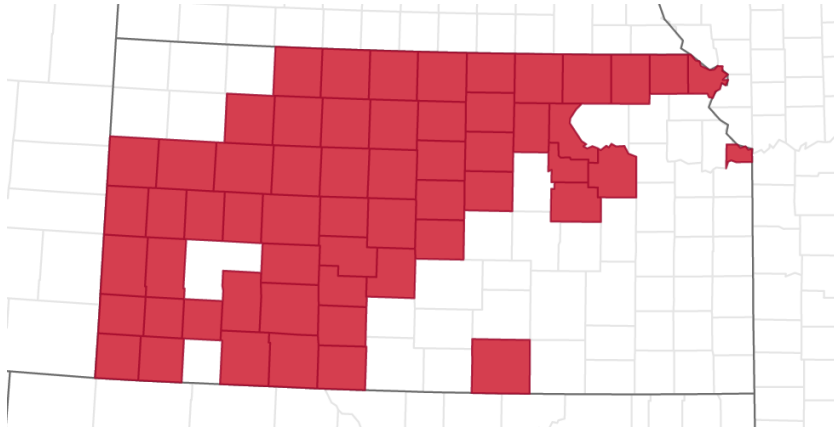
- District Organization of an EDA-designated Economic Development District (EDD).
- Indian Tribes.
- State, county, city or other political subdivision of a State, including a special purpose unit of a State or local government engaged in economic or infrastructure development activities.
- Institutions of higher education.
- Public or private non-profit organization or association acting in cooperation with officials of a political subdivision of a State.
- **NOT eligible**—Other federal agencies, for-profit entities and individuals.

EDA FY 2023 Disaster Opportunity



- EDA leads the federal government response for economic development during natural disasters. Has provided **\$3.2 billion** in investment since 1990s.
- EDA announced **\$500 million nationally** for FY23 Disaster Supplemental.
- The Denver Region (10 states, includes Kansas) received **\$57 million**.
- Kansas has the most disaster eligible counties at 58 in the Denver Region.
- **Remember: Processing time is limited for applications.**

Eligible Kansas Counties



Incident dates:

- Dec. 15, 2021, for DR-4640 Severe Storms and Straight-Line Winds.
- March 17-22, 2022, for DR-4654 Severe Winter Storms and Straight-Line Winds.
- <https://www.fema.gov/locations/kansas>

Barton, Brown, Clark, Clay, Cloud, Comanche, Doniphan, Ellis, Ellsworth, Edwards, Ford, Geary, Graham, Grant, Greeley, Gove, Gray, Hamilton, Haskell, Hodgeman, Jewell, Kiowa, Kearny, Lane, Lincoln, Logan, Marshall, Meade, Mitchell, Morris, Morton, Nemaha, Ness, Norton, Osborne, Ottawa, Pawnee, Phillips, Republic, Rice, Riley, Rooks, Rush, Russell, Saline, Scott, Sheridan, Smith, Stafford, Stanton, Stevens, Sumner, Trego, Wabaunsee, Washington, Wallace, Wichita, and Wyandotte.

EDA's Investment Priorities and EDD CEDS

-  **Equity**
-  **Recovery & Resilience**
-  **Workforce Development**
-  **Manufacturing**
-  **Technology-Based Economic Development**
-  **Environmentally-Sustainable Development**
-  **Exports & Foreign Direct Investment**

To learn more about
EDA's Investment
Priorities, visit:

[https://eda.gov/about/
investment-priorities/](https://eda.gov/about/investment-priorities/)

Kansas Contacts

Mark Werthmann

Economic Development Representative – KS, NE and KC Metro

mwerthmann@eda.gov

(720) 626-6192

Dan Lara

Economic Development Representative – KS and NE Disaster Supplemental

dlara@eda.gov

(913) 225-4968