

Trisha Purdon

Office of Rural Prosperity Director

Andrew Hayman

Community Development Block
Grants Director

Sara Bloom

Quality Places Manager

KANSAS
C O M M E R C E

WELCOME!

TODAY'S AGENDA

- What is Quality Places?
- Who is in Quality Places?
- Division Resources and Programs
- Framework For Growth
- Let's Talk



WHAT IS QUALITY PLACES?

The Quality Places Division works to enhance the overall quality of life and economic vitality of communities throughout Kansas. It focuses on creating attractive, sustainable, and vibrant environments that appeal to residents, businesses, and tourists. This division oversees programs that promote the development of public spaces, infrastructure, and cultural amenities, aiming to improve community well-being and foster economic growth.



WHY DO WE NEED QUALITY PLACES?

To build a robust and resilient economy, communities need to invest in Quality of Place. Current and future talent are prioritizing Quality of Place over employment opportunities. Communities that invest at home see long-term economic and individual and community benefits.

The Quality Places Division helps Kansas communities attract new investments and retain residents by supporting projects that enhance aesthetics, connectivity, and livability.



WHO IS IN QUALITY PLACES?

Community Development Block Grants

Kansas Main Street

Office of Broadband Development

Office of Rural Prosperity

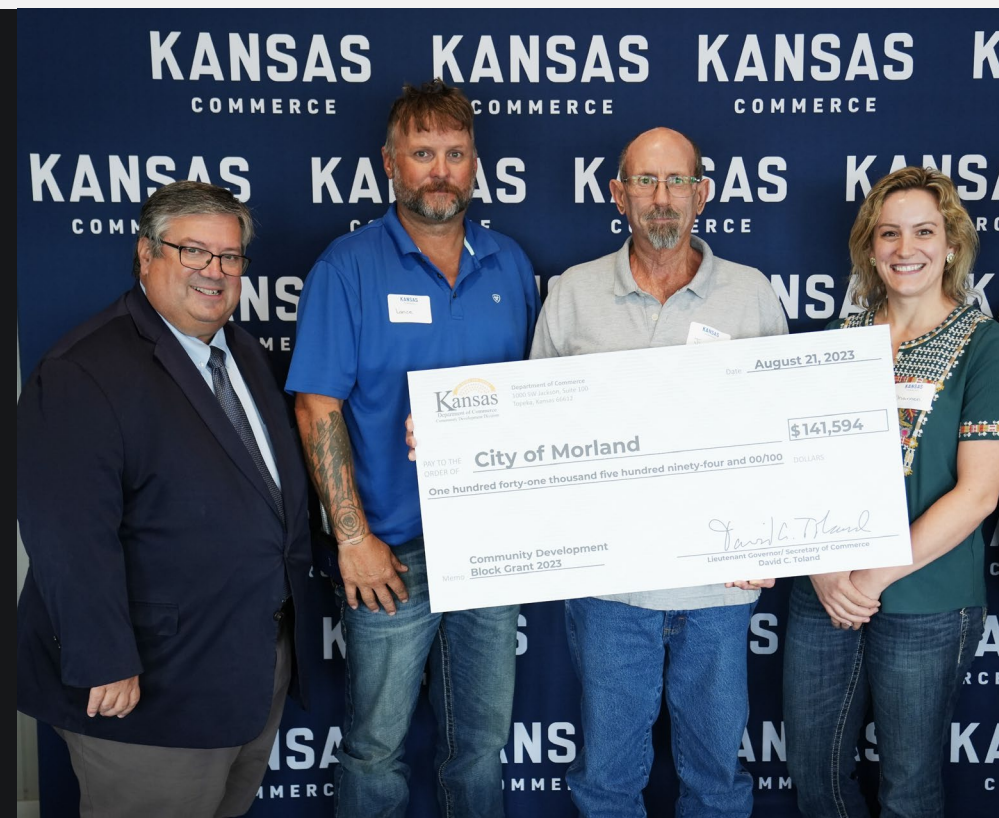
Quality Place Specialists





COMMUNITY DEVELOPMENT BLOCK GRANTS (CDBG)

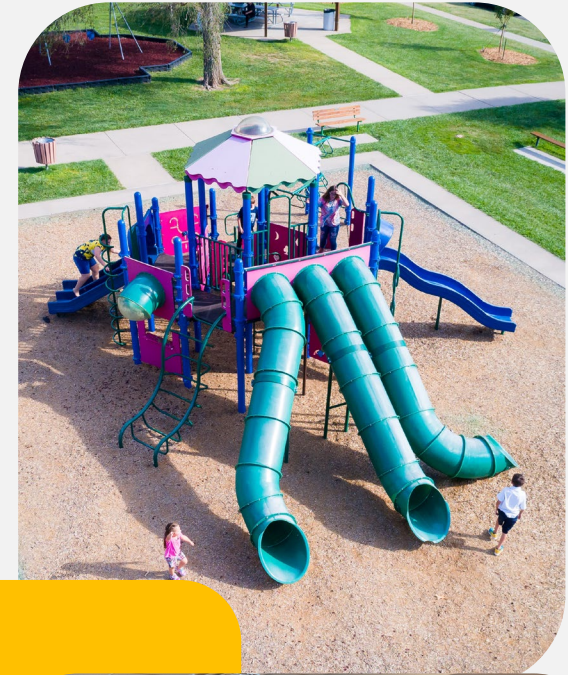
Positively impacting areas of need.



KANSAS
COMMERCE

The Community Development Block Grant (CDBG) program provides funding for projects that help low- to moderate-income neighborhoods thrive. Projects range from sidewalks to community centers, youth job training programs and more.

- Approximately \$14.5 million annually
- **Nearly \$32 million in 2025**
- Funding is prioritized for areas of need in Kansas
- Only cities/counties can apply for CDBG
- Projects must meet one of three National Objectives:
 - (1) LMI Percentage
 - (2) Slum and Blight
 - (3) Urgent Need



CDBG CATEGORIES

MAY 1- NOVEMBER 14

- Blueprint to Build
- Community Facilities: Large
- Community Facilities: Small
- Regional Water Implementation
- Youth Job Training
- Water and Sewer Infrastructure

OPEN NOW UNTIL NOV. 14

- Commercial Rehabilitation
- Economic Development
- Housing (Rehabilitation, Demolition, Neighborhood Development)
- Urgent Need for Disasters





BLOCK BY BLOCK, BUILDING THRIVING COMMUNITIES

The Community Development Block Grant (CDBG) program provides funding for projects that help low- to moderate-income neighborhoods thrive. Projects range from sidewalks to community centers, youth job training programs, and much more.

[2024 CDBG AWARD WINNERS](#)[PRESS RELEASE](#)

Our Programs

Our CDBG program is evolving to include a more diverse set of initiatives that meet broader community development needs. Here are the program areas that funding has been allocated to in 2025.

Community Facilities & Services
Non-Profit Childcare & Early Education Facilities

Max benefit up to
\$800,000
App. Deadline:
September 26, 2025

Community Facilities & Services
Community Centers, Senior Centers, Storm Shelters, Parks & Libraries

Max benefit up to
\$800,000
App. Deadline:
September 26, 2025

Community Facilities & Services
ADA Improvements
(Minimum of Architectural Barriers)

Water & Sewer
Regional Water Implementation

Max benefit up to
\$2,000,000
Accepted: Jan 27, 2025 –
Dec 12, 2025

Water & Sewer
Water & Sewer Infrastructure

Max benefit up to
\$800,000
App. Deadline:
September 26, 2025

Community Growth
Commercial Rehabilitation

Max benefit up to
\$300,000
Accepted: Jan 27, 2025 –
Dec 12, 2025

Urgent
Urgent Need for Disasters

CDBG WEBSITE TOUR

www.KansasCommerce.gov/cdbg

Let's take a look at the online component for CDBG before we hit the books.





KANSAS MAIN STREET

Revitalizing and preserving downtowns.



KANSAS
COMMERCE

Kansas Main Street is a self-help, technical assistance program that targets the revitalization and preservation of downtown districts through the development of a comprehensive strategy.

The Main Street Approach is centered around Transformation Strategies and four broad areas of work:

(1) Economic Vitality (2) Design (3) Organization
(4) Promotion.

Communities can become a **DESIGNATED** or **NETWORKED** Kansas Main Street Community.



RESIDENTIAL OPPORTUNITIES ON MAIN STREET (ROOMS)

AMOUNT: \$50,000

MATCH: 100%

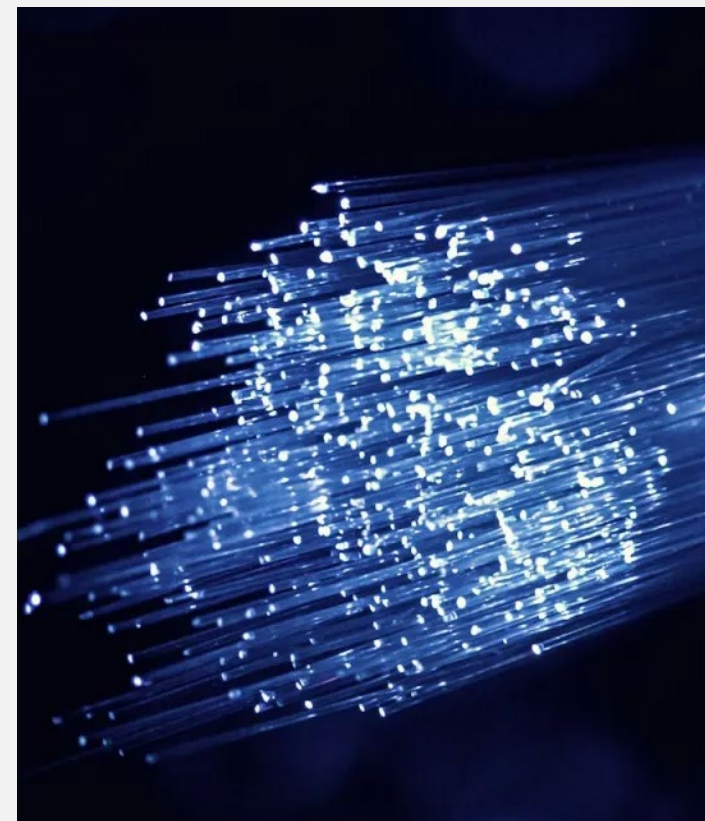
The program is focused on addressing housing shortages and enhancing livability in downtowns. Only designated Main Street communities are eligible to apply.





OFFICE OF BROADBAND DEVELOPMENT

Bridging digital divides. Connectivity for all.



KANSAS
COMMERCE

In our modern world, access to high-speed internet isn't a luxury; it's a necessity.

With so much vital information and communication moving online, communities and businesses unable to access high-quality internet connections aren't just at a disadvantage, they are effectively disqualified from a major portion of the economy. With this in mind, KOBD was established in 2020 to help ensure all Kansans have the opportunity to live, work, learn, and compete in a global economy by improving universal access to quality, affordable, and reliable broadband.





OFFICE OF RURAL PROSPERITY

Empowering rural communities for growth.



KANSAS
COMMERCE

Established in 2019, The Office of Rural Prosperity (ORP) advocates for and promotes rural Kansas and focuses on efforts designed to aid rural improvements.

Through ongoing conversations with rural stakeholders, ORP identifies key policy priorities and blends administrative action with legislative work to remove barriers to prosperity.



HISTORIC ECONOMIC ASSET LIFELINE (HEAL)

AMOUNT: \$100,000

MATCH: 100%

This program rehabilitates downtown buildings for new businesses or organizations in rural communities. Existing businesses can also use it to improve their facades.

EMERGENCY HEAL (E-HEAL)

AMOUNT: \$100,000

MATCH: 100%

E-HEAL grants are intended to bring rural downtown buildings back from likely demolition or collapse and rehabilitate them into productive spaces for new or expanding businesses, childcare, housing, arts and culture, or entrepreneurship.



RURAL CHAMPIONS

AMOUNT: \$20,800

MATCH: 25%

This program provides a stipend to hire a Rural Champion to fill a gap in community capacity to complete a needed project. Selected projects also receive a \$25,000 implementation grant. The implementation plan is developed by the Rural Champion.



RURAL MURALS

AMOUNT: \$7,500

MATCH: 25%

This program provides funding for communities with populations of 15,000 or less to create new murals or public art that incorporate the community's history, culture, heritage, tourism or other community-led art pieces.



STRATEGIC ECONOMIC EXPANSION AND DEVELOPMENT GRANTS (SEED)

AMOUNT: \$25,000

MATCH: 10%

This program supports the economic revitalization of Kansas **communities under 5,000 in population** through investments in quality-of-place initiatives. Categories can include childcare and senior programming, community vibrancy, food retail, and libraries.



RURAL OPPORTUNITY ZONES (ROZ) *STUDENT LOAN REPAYMENT*

AMOUNT: \$15,000

MATCH: 100%

This program helps recruit individuals with higher education degrees to rural counties with populations of **40,000 or less**. ROZ provides up to \$15,000 towards student loan repayment for these eligible individuals over five years. Local sponsors are required, and contribute \$1,500 per year to ORP, this is matched and paid to the individual to help repay their student loans.



RURAL OPPORTUNITY ZONES (ROZ)

PERSONAL STATE TAX CREDIT

Are you thinking about moving to Kansas, or have you recently become a resident? New residents to Kansas who move into one of our Rural Opportunity Zones may be eligible for a 100% personal state income tax credit!

Learn more about the ROZ Tax Credit at:
[www. **kansascommerce.gov/roz**](http://www.kansascommerce.gov/roz)
ksrevenue.gov/prtaxcredits-roz.html
Email: kdor_tac@ks.gov



GRASSROOTS STRATEGY DEVELOPERS (GSD)

GSDs are ready to help your community build bridges to prosperity and get stuff done!

Our team lives in rural areas of our state and understands the unique challenges and opportunities in small towns. They will meet you anywhere you are and help get your community moving in the right direction. They excel at navigating state resources, finding alternate and creative routes to reach your community goals, or building a plan that will help build rural prosperity.





QUALITY PLACE SPECIALISTS

Enhancing communities through engagement.

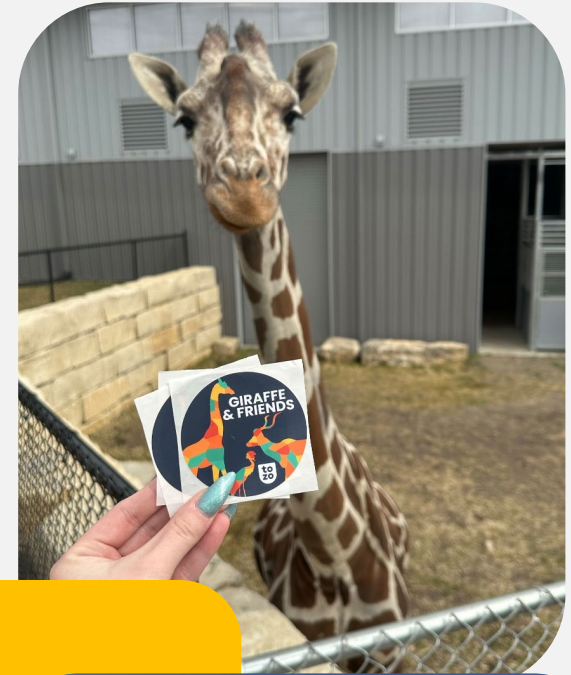


KANSAS
COMMERCE

A quality place specialist focuses on improving the functionality, aesthetics, and overall experience of public and private spaces for the entire state.

They assess and enhance design, accessibility, and community engagement to create environments that are not only visually appealing but also efficient, sustainable, and welcoming for all.

They can also provide resources and expertise on topics that include placemaking, childcare, housing, economic development, and more.



COMMUNITY OUTREACH

Quality Place Specialists are ready to partner with your community!

They excel at identifying unique assets and opportunities, helping you capitalize on what makes your area special. Whether you're looking to engage local youth, need a presentation on how quality places drive economic development or want to brainstorm ideas for an empty building, they can help. From housing to childcare and everything in between, they're here to support your community's growth and success.



PLACEMAKING

Placemaking is the **activation** and **reimagining of public spaces** in communities.

Commerce supports community-led projects that create, revitalize or activate public spaces to bring people together to improve their quality of place.

Designing spaces goes beyond appearances - it's about cultivating a sense of **community** and **connection**.



CHILDCARE

Commerce understands supporting childcare is essential to strengthening communities.

Programs such as CSP, HEAL, and CDBG, provide funding for childcare initiatives.

Additionally, we are part of the Kansas Childcare Go Team, dedicated to helping providers navigate licensing challenges. With experience in addressing local zoning and municipal code barriers, they ensure communities can develop and expand accessible, high-quality childcare options for families.





QUALITY PLACE SPECIALISTS

Amplifying fundraising for non-profits.



KANSAS
COMMERCE

COMMUNITY SERVICE PROGRAM (CSP) TAX CREDITS

AMOUNT: \$200,000

MATCH: None

Allows private, non-profit organizations and public health care entities to improve their ability to undertake significant capital campaigns for community improvement projects. State tax credits substantially reduce the cost of contributing to a charitable organization. **These credits are refundable.**



INDIVIDUAL DEVELOPMENT ACCOUNT (IDA) TAX CREDITS

AMOUNT: \$500,000

MATCH: None

An “IDA,” is a savings account for low-income workers that can be used for small-business development, higher education or purchasing a first home.

The tax credits provided by the state allow non-profits to fundraise and finance an IDA program and the matching savings accounts.





HOUSING

Affordable, accessible, quality living.



KANSAS
COMMERCE



Housing Resources in Kansas

For additional funding information, visit the Housing Resources in Kansas page at www.kansascommerce.gov/housing.

DEVELOPERS						
Program	Type	Eligible Grantees	Description / Eligible Activities	Award Max.	Dates	Contact
Startup Housing Opportunity Venture Loan (SHOVL) KDC	Loan	Developers	Funds developer expenses prior to the closing of permanent financing for housing development in communities under 10,000	\$25k	Ongoing	Sara Bloom Sara.Bloom@ks.gov
Reinvestment Housing Incentive District (RHID) KDC	Reimbursement	Developers	Aids developers in building housing by financing housing development infrastructure, renovations of buildings over 25 years old in central business districts, or infill housing. RHID captures incremental increase in property taxes created by housing development projects for up to 25 years.	Varies	Ongoing	Robert North Robert.North@ks.gov
Affordable Housing Program (AHP) FHLB	Grant	For-profit entities / Developers	Finance the purchase, construction, or rehabilitation of owner-and rental-occupied housing for low- or moderate-income households through subsidized advances and direct subsidies.	\$1.5 million	Opens July 2024	Dustie Humphreys dustie.humphreys@fhlbtpeka.com
Kansas Historic Tax Credits SHPO	Tax Credit	Developers	Offered for qualified rehabilitation projects on properties listed on the State or National Register of Historic Places.	Varies	Ongoing	SHPO Staff kshs.shpo@ks.gov
Rural Rental Housing Program USDA-RD	Loan	Developers	Provides financing for affordable multi-family rental housing for low-income, elderly, or disabled individuals and families in eligible rural areas. Eligible activities include buying and improving land and infrastructure.	Varies	Ongoing	USDA Multi-Family Housing Service multifamilyhousing@usda.gov

HOUSING RESOURCES DOCUMENT

kansascommerce.gov/housing

Developers, governments and individuals can all find resources for housing development.



HOUSING ASSESSMENT TOOL (HAT)

A self-assessment guide for communities to gather and analyze data on their housing inventory, partner with relevant stakeholders and develop priorities for local housing investment.

Communities can use this tool to make data-driven decisions in addressing housing investment opportunities.



HOUSING INTERAGENCY ADVISORY COMMITTEE (HIAC)

The HIAC is a collaborative effort between federal and state agencies involved in housing financing.

The committee was formed to help communities navigate funding opportunities, develop long-term housing strategies, and address the unique challenges of housing development, particularly in rural areas. While no single solution fits every community, HIAC partners work together to provide tailored guidance and resources.



STRATEGIES FOR FUNDING HOUSING PROJECTS

For cities and counties that have completed HATs or housing plans and are ready to take the next step toward funding and implementation.

The HIAC will explain their programs and how the programs can help resolve housing needs. **This event is FREE to attend!**

STATE AND FEDERAL PARTNERS TO EXPECT:



REGISTER TODAY

Light refreshments will be served. Lunch will be on your own.

www.KansasCommerce.gov/Housing



Housing Interagency Advisory Committee

**Tuesday, April 29, 2025
9 AM to 12 PM**

**Great Bend Events Center
3111 10th Street | Great Bend**





OTHER RESOURCES

**Community Development Doesn't Happen
Without Partnerships.**



KANSAS
COMMERCE



KANSAS ARTS COMMISSION (KAC)

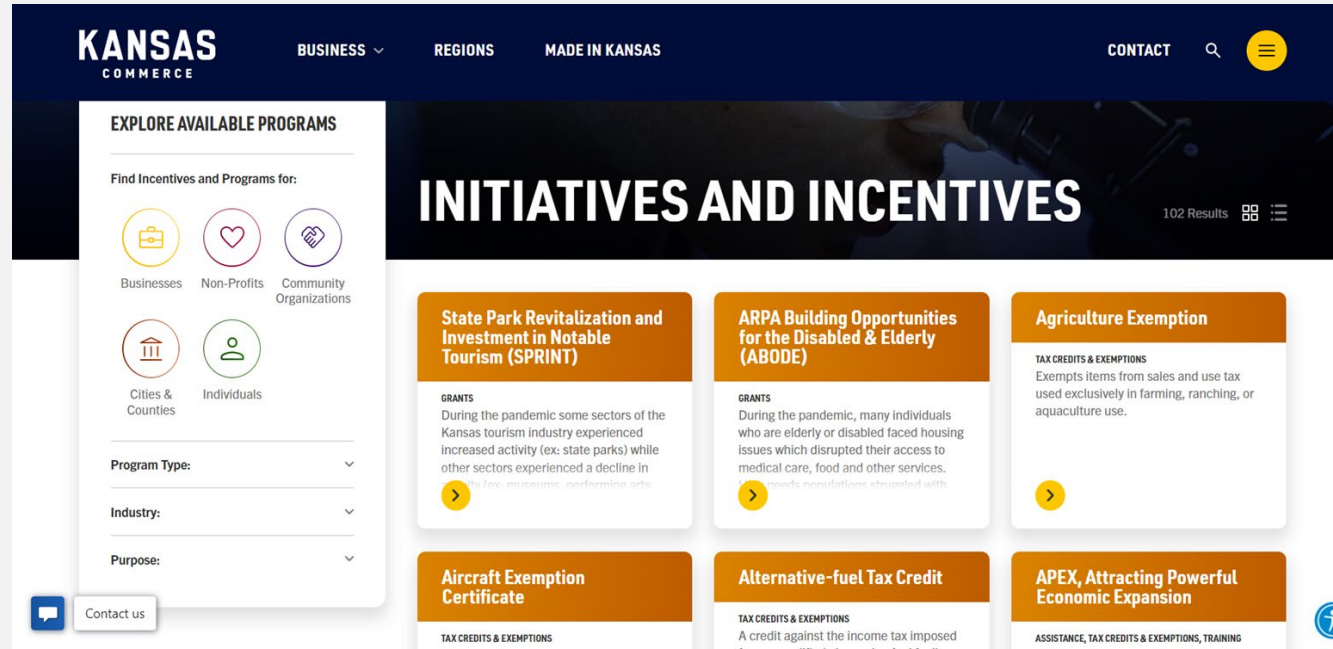
KAC is dedicated to promoting, supporting and expanding Kansas' creative industries and enriching communities through arts and culture.

They offer a range of programs and services to support cultural programming and enhance the role the arts play at all levels in our state and the quality of place in our communities.



KANSAS
COMMERCE





ONLINE LOOKUP TOOL FOR INITIATIVES AND INCENTIVES

[www.kansascommerce.gov/
initiatives-and-incentives/](http://www.kansascommerce.gov/initiatives-and-incentives/)



KANSAS
COMMERCE



COMMERCE GRANTS AT A GLANCE	AMOUNT	MATCH	FUNDING TIMELINE			CONTACT
	Maximum		Announced	Application	Awarded	
Barn Adaptation & Restoration Needs Grant (BARN) Funds to help revitalize old barns for use as agritourism venues	\$25,000	50%	Jan.	Jan. - Mar.	July	Kelsey.Wendling@ks.gov
Broadband Acceleration Grant (BAG) Infrastructure buildout in economically distressed counties	\$1,000,000	50%	May	May - July	Sept.	Joseph.Le@ks.gov
Community Development Block Grant (CDBG) Competitive Round: community facilities, public service, infrastructure Rolling Round: housing, commercial rehabilitation, economic development, urgent need, regional water systems	\$800,000	25%	Jan.	Jan. - Sept.	Dec.	Andrew.Hayman@ks.gov
	\$1,000,000	25%	Jan.	Rolling	Rolling	Andrew.Hayman@ks.gov
Community Service Tax Credit Program (CSP) Amplify fundraising efforts for non-profit organizations	\$200,000 tax credit	0%	Jan.	Mar. - Apr.	June	Sara.Bloom@ks.gov
Historic Economic Asset Lifeline Grant (HEAL) Rehabilitate downtown buildings for new businesses or organizations in rural communities	\$100,000	100%	Nov.	Nov. - Feb.	Apr.	Trisha.Purdon@ks.gov
Emergency Historic Economic Asset Lifeline Grant (E-HEAL) Rehabilitate downtown buildings from likely demolition or collapse	\$100,000	100%	July	Rolling	Within 15 days of application submission	Trisha.Purdon@ks.gov
Kansas Angel Investor Tax Credit Program Bring together accredited angel investors with qualified companies seeking early-stage investment	Varies by project	N/A	N/A	All Year	Rolling	Rachell.Rowand@ks.gov
Kansas Apprenticeship Tax & Grant Act Expand/promote apprenticeships within businesses, non-profits, healthcare and education	\$2,750 per apprentice	0%	N/A	Jan. May	Feb. June	Shonda.Anderson@ks.gov
Kansas Office of Apprenticeship Project Grant Support needs related to technical instruction for registered apprenticeship	\$200,000	100%	N/A	June - Aug.	Sept.	Shonda.Anderson@ks.gov
Kansas Arts Commission Arts Everywhere Program Arts in Education Support the role the arts play in all levels of education, community service and workforce development	\$10,000	100%	Sept.	Dec. - Jan.	Apr.	Curtis.Young@ks.gov
Innovative Partnerships Assistance for arts-centered programs that address community needs	\$20,000	100%	Sept.	Dec. - Jan.	Apr.	Curtis.Young@ks.gov
Organizational Development - Capacity Building Fund projects that increase administrative or artistic capacity	\$5,000	100%	Sept.	Dec. - Jan.	Apr.	Curtis.Young@ks.gov
Organizational Development - Salary Assistance Support for one or more positions at rural and/or SED art organizations	\$20,000	100%	Sept.	Dec. - Jan.	Apr.	Curtis.Young@ks.gov
Specific Arts & Culture Projects Support for the arts in Kansas through funding for cultural projects and programs	\$10,000	100%	Sept.	Dec. - Jan.	Apr.	Curtis.Young@ks.gov
Kansas Arts Commission General Operating Support Program Strengthen the state's cultural infrastructure	\$25,000	100%	Sept.	Dec. - Jan.	Apr.	Curtis.Young@ks.gov
Kansas Arts Commission Public Art & Mural Program Support permanent or semi-permanent installations, murals and other public art projects	\$10,000	100%	Sept.	Dec. - Jan.	Apr.	Curtis.Young@ks.gov
Kansas Arts Commission Visiting Artists Program Engage and deepen impact of arts on local and underserved audiences	\$7,500	100%	Sept.	Dec. - Jan.	Apr.	Curtis.Young@ks.gov
Kansas Arts Commission Visiting Touring Roster Artists Program Encourage the integration of visiting artists into a variety of community settings	\$8,500	100%	N/A	Rolling	Rolling	Curtis.Young@ks.gov
Proof of Concept Fund Funds to help develop a project/product to the point where an entity can raise external capital	\$25,000	100%	N/A	Rolling	Quarterly	Rachell.Rowand@ks.gov
Rural Champions Provides stipend to hire a Champion to fill a gap in community capacity to complete a needed project	\$20,800	25%	Apr.	June - July	Sept.	Trisha.Purdon@ks.gov
Rural Murals	\$7,500	25%	Feb.	Feb. - May	May	Trisha.Purdon@ks.gov

COMMERCE
“GRANTS AT A
GLANCE” OR
GRANTS
[www.kansascommerce.gov/
grantscalendar](http://www.kansascommerce.gov/grantscalendar)



KANSAS
COMMERCE

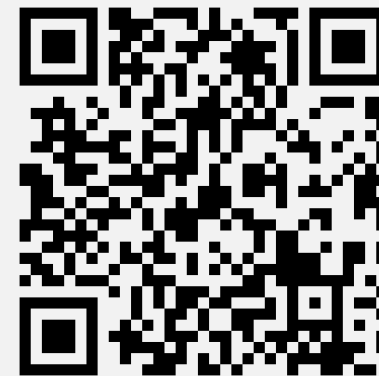




LOVE, KANSAS CAMPAIGN

www.lovekansas.com

A talent attraction initiative,
providing insights into the
state's abundant careers and
expanding industries.



KANSAS
COMMERCE

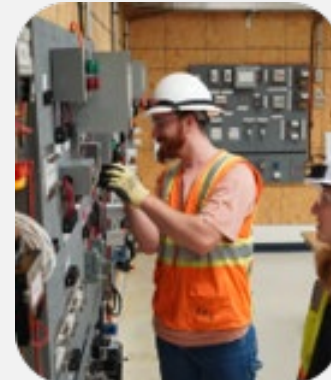


KANSAS

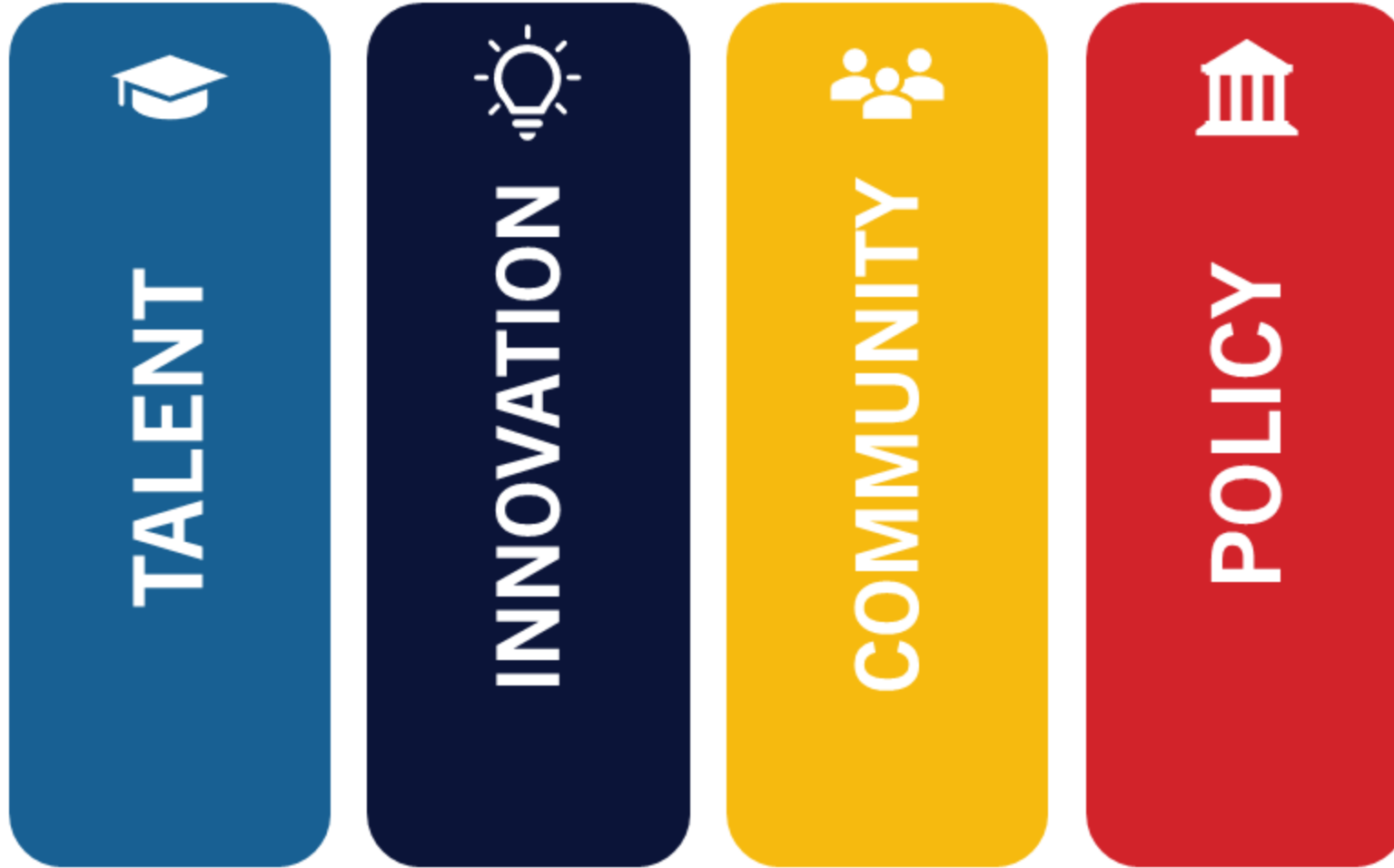
COMMERCE

A HOLISTIC APPROACH TO GROWTH...

- Business Development
- Workforce Services
- Kansas Arts Commission
- Kansas Main Street
- Office of Rural Prosperity
- Office of Innovation
- Office of Small Business Development and Entrepreneurship
- Kansas Tourism
- International Trade
- Office of Broadband Development
- Office of Registered Apprenticeship



Strategic Pillars:



GUIDING PRINCIPLES

SPEED

Speed is the New Incentive

QUALITY PLACES

If You're Not Addressing Human Aspects, You Will Lose

TALENT

We need more humans in Kansas.



Trisha Purdon

Office of Rural Prosperity Director
Trisha.Purdon@ks.gov

Andrew Hayman

Community Development Block
Grants Director
Andrew.Hayman@ks.gov

Sara Bloom

Quality Places Manager
Sara.Bloom@ks.gov

KANSAS
C O M M E R C E



Let's Talk

www.kansascommerce.gov

KANSAS

COMMERCE