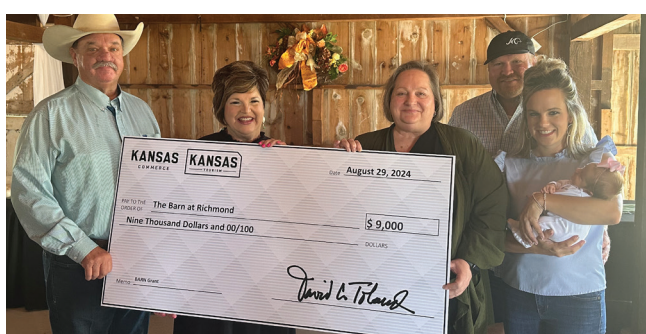


GRANTS GUIDE

Transforming communities in every region of Kansas



KANSAS
COMMERCE

Fellow Kansans,

The Kansas Department of Commerce is one of the strongest economic development agencies in the country. That's because our amazing team is focused on a single goal: growing Kansas.

We do this in different ways, from recruiting new businesses and helping existing businesses grow, to supporting our state's workforce and bolstering the quality of life all across the state.

By supporting each city and county in Kansas, we're transforming the places Kansans call home and building a more resilient economy statewide.

Our goal is to foster strong urban, suburban and rural communities, but we know there is no "one-size-fits-all" approach that will get us there.

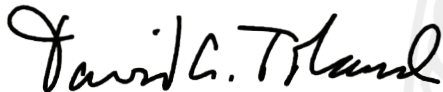
In recognition of this, Commerce offers a wide array of grants, programs and services to meet the needs of every region in Kansas – in a way that fits their vision and goals for growth.

This guide provides a list of financial support we offer to cities, counties and non-profits throughout the state. We want this guide to serve as a resource local leaders can use in their local development efforts.

As you read about our available grants and programs, I encourage you to reach out to our team with any questions you have about putting these resources to work for the future economic success of your communities – and Kansas.

Anchored by our exceptional economic strength, strong partnerships and commitment to innovation – we will continue our historic rise to new heights all across Kansas. And we'll continue to usher in a bright future for everyone who calls the Sunflower State "home."

Ad Astra Per Aspera,



David C. Toland
Secretary of Commerce & Lieutenant Governor

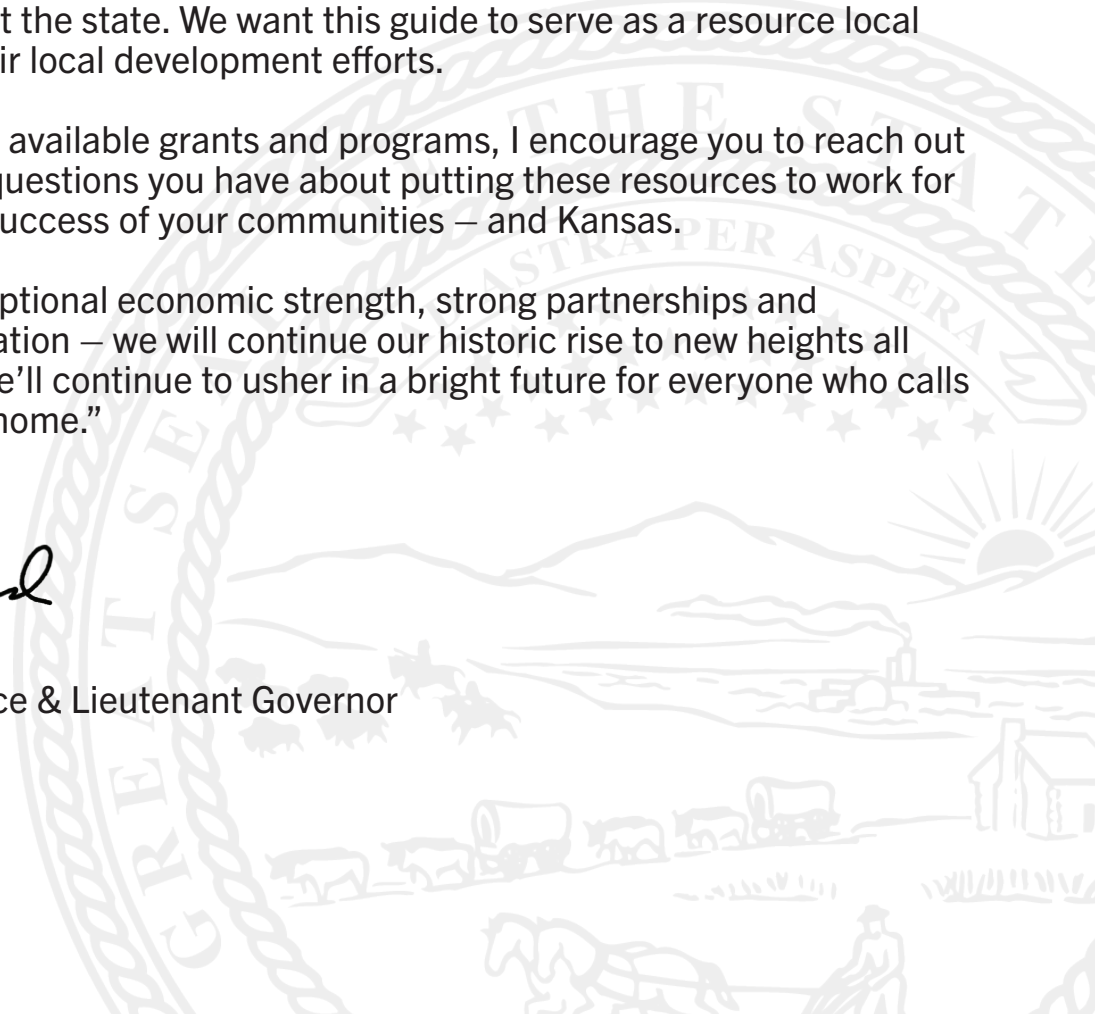




TABLE OF CONTENTS

Grants at a Glance Calendar	4
Broadband Acceleration Grant (BAG)	8
Community Development Block Grant (CDBG)	
ADA Improvements	9
Commercial Rehabilitation	10
Community Centers, Senior Centers, Storm Shelters, Parks & Libraries	11
Community Centers New Build	12
Economic Development	13
Housing Rehabilitation & Demolition or Neighborhood Development	14
Non-Profit Childcare & Early Education Facilities	15
Regional Water Implementation	16
Sidewalks & Trails	17
Urgent Need for Disasters	18
Water & Sewer Infrastructure	19
Youth Job Training	20
Community Service Tax Credit Program (CSP)	21
Historic Economic Asset Lifeline Grant (HEAL)	22
Emergency Historic Economic Asset Lifeline Grant (E-HEAL)	23
Kansas Angel Investor Tax Credit Program	24
Kansas Apprenticeship Tax & Grant Act	25
Kansas Apprenticeship Project Grant	26
Kansas Arts Commission	
Arts Everywhere	
Arts in Education	27
Innovative Partnerships	28
Organizational Development - Capacity Building	29
Organizational Development - Salary Assistance	30
Specific Arts & Culture Projects	31
General Operating Support Program	32
Public Art & Mural Program	33
Visiting Artists Program	34
Visiting Touring Roster Artists Program	35
Proof of Concept Fund	36
Residential Opportunities on Main Street Grant (ROOMS)	37
Rural Champions Grant	38
Rural Murals Grant	39
Small Business R&D Acceleration Grant	40
Strategic Economic Expansion & Development Grant (SEED)	41
Tourism Attraction Development Grant	42
Tourism Marketing Grant	43

COMMERCE GRANTS AT A GLANCE

Broadband Acceleration Grant (BAG)

Infrastructure buildout in economically distressed counties

Community Development Block Grant (CDBG)

Competitive Round: community facilities, public service, infrastructure

Rolling Round: housing, commercial rehabilitation, economic development, urgent need, regional water systems

Community Service Tax Credit Program (CSP)

Amplify fundraising efforts for non-profit organizations

Historic Economic Asset Lifeline Grant (HEAL)

Rehabilitate downtown buildings for new businesses or organizations in rural communities

Emergency Historic Economic Asset Lifeline Grant (E-HEAL)

Rehabilitate downtown buildings from likely demolition or collapse

Kansas Angel Investor Tax Credit Program

Bring together accredited angel investors with qualified companies seeking early-stage investment

Kansas Apprenticeship Tax & Grant Act

Expand/promote apprenticeships within businesses, non-profits, healthcare and education

Kansas Office of Registered Apprenticeship Project Grant

Support needs related to technical instruction for registered apprenticeship

Kansas Arts Commission Arts Everywhere Program

Arts in Education

Support the role arts play in all levels of education, community service and workforce development

Innovative Partnerships

Assistance for arts-centered programs that address community needs

Organizational Development - Capacity Building

Fund projects that increase administrative or artistic capacity

Organizational Development - Salary Assistance

Support for one or more positions at rural and/or SEDI art organizations

Specific Arts & Culture Projects

Support for the arts in Kansas through funding for cultural projects and programs

Kansas Arts Commission General Operating Support Program

Strengthen the state's cultural infrastructure

Kansas Arts Commission Public Art & Mural Program

Support permanent or semi-permanent installations, murals and other public art projects

Kansas Arts Commission Visiting Artists Program

Engage and deepen impact of arts on local and underserved audiences

Kansas Arts Commission Visiting Touring Roster Artists Program

Encourage the integration of visiting artists into a variety of community settings

Amount Maximum	Match	Funding Timeline			Contact
		Announced	Application	Awarded	
\$1,000,000	50%	Mar.	Mar - Apr.	May	Joseph.Le@ks.gov
\$2,000,000	25%	Jan.	Aug. - Sept.	Dec.	Andrew.Hayman@ks.gov
\$2,000,000	25%	Jan.	Rolling	Rolling	Andrew.Hayman@ks.gov
\$200,000 tax credit	0%	Jan.	Mar. - Apr.	June	Sara.Bloom@ks.gov
\$100,000	100%	Nov.	Nov. - Jan.	Apr.	Trisha.Purdon@ks.gov
\$100,000	100%	July	Rolling	Within 15 days of application submission	Trisha.Purdon@ks.gov
Varies by project	N/A	Jan.	Rolling	Rolling	Romaine.Redman@ks.gov
\$2,750 per apprentice	0%	Jan. July Oct.	Jan. - May July - Aug. Oct.	June Sept. Nov.	Eryn.Knecht@ks.gov
\$200,000	100%	May	June - Aug.	Sept.	Shonda.Anderson@ks.gov
\$10,000	100%	Dec.	Jan. - Feb.	May	Curtis.Young@ks.gov
\$20,000	100%	Dec.	Jan. - Feb.	May	Curtis.Young@ks.gov
\$5,000	100%	Dec.	Jan. - Feb.	May	Curtis.Young@ks.gov
\$20,000	100%	Dec.	Jan. - Feb.	May	Curtis.Young@ks.gov
\$10,000	100%	Dec.	Jan. - Feb.	May	Curtis.Young@ks.gov
\$25,000	100%	Dec.	Jan. - Feb.	May	Curtis.Young@ks.gov
\$10,000	100%	Dec.	Jan. - Feb.	May	Curtis.Young@ks.gov
\$7,500	100%	Dec.	Jan. - Feb.	May	Curtis.Young@ks.gov
\$8,500	100%	N/A	Rolling	Rolling	Curtis.Young@ks.gov
For more information, visit www.kansascommerce.gov/grantscalendar . Amounts and dates subject to change. February 2025					

COMMERCE GRANTS AT A GLANCE

Proof of Concept Fund

Funds to help develop a project/product to the point where an entity can raise external capital

Residential Opportunities on Main Street Grant (ROOMS)

Funds to support new upper-floor housing in Designated Kansas Main Street communities

Rural Champions

Provides stipend to hire a Champion to fill a gap in community capacity to complete a needed project

Rural Murals

Support new murals in rural communities

Small Business R&D Acceleration Grant

Assistance for small businesses in advancing a product or service to commercialization

Strategic Economic Expansion & Development Grant (SEED)

Support small projects in communities under 5,000 population

Tourism Attraction Development Grant - Spring/Fall Round

Assist the development of new tourism attractions or enhance existing attractions

Tourism Marketing Grant

Assist in new or first-time innovative tourism advertising and marketing efforts

AMOUNT Maximum	MATCH	FUNDING TIMELINE			CONTACT
		Announced	Application	Awarded	
\$25,000	100%	Jan. Apr. July Oct.	Jan. - Mar. Apr. - June July - Sept. Oct. - Dec.	Quarterly	Brandon.Hutton@ks.gov
\$50,000	100%	Feb.	Mar. - Apr.	May	Scott.Sewell@ks.gov
\$20,800	25%	May	June - Aug.	Sept.	Kerri.Falletti@ks.gov
\$7,500	25%	Feb.	Feb. - Apr.	May	Trisha.Purdon@ks.gov
\$25,000	100%	Jan. Apr. July Oct.	Jan. - Mar. Apr. - June July - Sept. Oct. - Dec.	Quarterly	Brandon.Hutton@ks.gov
\$25,000	10%	Aug.	Aug. - Oct.	Dec.	Trisha.Purdon@ks.gov
\$200,000 per round	60%	Feb. Aug.	Feb. - Apr. Aug. - Oct.	May Nov.	Bridgette.Job@ks.gov
\$10,000	60%	Jan.	July - Aug.	Oct. - Nov.	Bridgette.Job@ks.gov

BROADBAND ACCELERATION GRANT

The Broadband Acceleration Grant (BAG) program is critical in our plan to address broadband gaps statewide. Funds will be targeted to areas that are unlikely to receive broadband service without state or federal funding support.

Launched in 2020, the program is poised to invest \$85 million over 10 years toward bridging the digital divide in Kansas, thanks to broadband modernization funding provided through the Kansas Department of Transportation's Eisenhower Legacy Transportation Program (IKE).



KanOkla breaks ground on their BAG 4.0 project in Sumner County.

GRANT DETAILS

PROGRAM ABBREVIATION	BAG
FUNDING AVAILABILITY	\$85,000,000 annually over 10 years starting in FY21 (state funds)
2025 FUNDS AVAILABLE	\$10,000,000
MAXIMUM AWARD AMOUNT	\$1,000,000
MATCH REQUIREMENT	50%
ELIGIBLE ENTITIES	Political subdivisions or entities of political subdivisions, corporations, limited liability companies, partnerships or other business entities, non-profit organizations, any other entity authorized by state law to provide broadband services
ELIGIBLE USES	Eligible broadband project expenses are terrestrial capital expenses directly related to the construction of a qualified broadband project, including permitting, materials, supplies, equipment and construction of "last-mile" infrastructure expenses
FUNDING TIMELINE	
ANNOUNCEMENT	March
APPLICATION PERIOD	March-April
DEADLINE	April
NOTIFICATION	May
NOTES	N/A
CONTACT	Joseph.Le@ks.gov
MORE INFORMATION	https://www.kansascommerce.gov/officeofbroadbanddevelopment/

COMMUNITY DEVELOPMENT BLOCK GRANT



ADA Improvements

This program funds the removal of architectural barriers that restrict the accessibility or mobility of elderly or severely disabled adults to increase access in downtown or main street districts or other non-residential buildings. Eligible expenses include:

- Installation of eligible improvements which could include automatic doors, ramps and chair lifts
- Architectural design for projects
- Administration costs for grant funds

ADA sidewalk improvement project in Cottonwood Falls.

GRANT DETAILS

PROGRAM ABBREVIATION	CDBG
FUNDING AVAILABILITY	Funding amount determined annually by Housing and Urban Development (federal funds)
2025 FUNDS AVAILABLE	\$500,000
MAXIMUM AWARD AMOUNT	\$100,000 max per building
MATCH REQUIREMENT	25%
ELIGIBLE ENTITIES	Cities or counties in Kansas that do not receive entitlements from HUD (Entitlement areas: Johnson County, Kansas City, Lawrence, Leavenworth, Manhattan, Overland Park, Shawnee, Topeka, Wichita). CDBG awards must comply with federal requirements to primarily benefit low- and moderate-income (LMI) persons
ELIGIBLE USES	Improvement to buildings in downtowns, main street districts or other non-residential community buildings to increase accessibility for disabled residents
FUNDING TIMELINE	
ANNOUNCEMENT	January
APPLICATION PERIOD	August-September
DEADLINE	September
NOTIFICATION	December
NOTES	N/A
CONTACT	Tim.Parks@ks.gov
MORE INFORMATION	https://www.kansascommerce.gov/cdbg/removal-of-architectural-barriers/

COMMUNITY DEVELOPMENT BLOCK GRANT

Commercial Rehabilitation

This program funds projects assisting private property owners in the rehabilitation of downtown structures resulting in a commercial business. Eligible expenses include:

- Construction costs for building rehabilitation to correct code violations, historic preservation or for job creation
- Improvements to the exterior of the building, abatement of asbestos hazards and lead-based paint hazards evaluation and reduction
- Rehabilitation of a property designated as being located in a slum or blighted area



Commercial rehabilitation project in Eudora.

GRANT DETAILS

PROGRAM ABBREVIATION	CDBG
FUNDING AVAILABILITY	Funding amount determined annually by Housing and Urban Development (federal funds)
2025 FUNDS AVAILABLE	\$2,000,000
MAXIMUM AWARD AMOUNT	\$300,000
MATCH REQUIREMENT	25%
ELIGIBLE ENTITIES	Cities or counties in Kansas that do not receive entitlements from HUD (Entitlement areas: Johnson County, Kansas City, Lawrence, Leavenworth, Manhattan, Overland Park, Shawnee, Topeka, Wichita)
ELIGIBLE USES	Improvements to and rehabilitation of commercial buildings
FUNDING TIMELINE	
ANNOUNCEMENT	January
APPLICATION PERIOD	Rolling
DEADLINE	Rolling
NOTIFICATION	Rolling
NOTES	N/A
CONTACT	Tim.Parks@ks.gov
MORE INFORMATION	https://www.kansascommerce.gov/cdbg/commercial-district-rehabilitation/

COMMUNITY DEVELOPMENT BLOCK GRANT



Playground equipment ribbon cutting in Douglass.

Community Centers, Senior Centers, Storm Shelters, Parks & Libraries

Increasing opportunities for community engagement, health, connectedness and vibrancy, this program provides funding for:

- Construction or renovation of new or existing community centers, senior centers, storm shelters, libraries or parks
- Installation of benches, playground equipment, splash pads, restrooms, picnic areas or renovations to existing swimming pools
- Engineering and architectural costs and fees
- Administration costs for grant funds

GRANT DETAILS

PROGRAM ABBREVIATION	CDBG
FUNDING AVAILABILITY	Funding amount determined annually by Housing and Urban Development (federal funds)
2025 FUNDS AVAILABLE	\$5,500,000
MAXIMUM AWARD AMOUNT	\$800,000
MATCH REQUIREMENT	25%
ELIGIBLE ENTITIES	Cities or counties in Kansas that do not receive entitlements from HUD (Entitlement areas: Johnson County, Kansas City, Lawrence, Leavenworth, Manhattan, Overland Park, Shawnee, Topeka, Wichita). CDBG awards must comply with federal requirements to primarily benefit low- and moderate-income (LMI) persons
ELIGIBLE USES	Projects to increase community engagement, health, connectedness and vibrancy in communities. Examples are: construction or renovation of community centers, libraries, parks and other installations like benches, playground equipment, picnic areas, etc.
FUNDING TIMELINE	
ANNOUNCEMENT	January
APPLICATION PERIOD	August-September
DEADLINE	September
NOTIFICATION	December
NOTES	N/A
CONTACT	Andrew.Hayman@ks.gov
MORE INFORMATION	https://www.kansascommerce.gov/cdbg/community-recreation-centers-parks-libraries/

COMMUNITY DEVELOPMENT BLOCK GRANT

Community Centers New Build

This program helps in the construction of new community centers by reducing professional service fees and construction costs with three pre-approved, “off the shelf” designs. Designed with energy efficiency in mind, the designs will reduce operating costs and are encouraged to be placed in walkable commercial areas with existing infrastructure or co-located with existing community facilities such as schools, hospitals, libraries or community colleges.

Other eligible costs include construction of pre-approved design, fees and administration costs for grant funds.



Rendering of a future CDBG-funded community center in Derby.

GRANT DETAILS

PROGRAM ABBREVIATION	CDBG
FUNDING AVAILABILITY	Funding amount determined annually by Housing and Urban Development (federal funds)
2025 FUNDS AVAILABLE	\$12,700,000
MAXIMUM AWARD AMOUNT	\$2,000,000
MATCH REQUIREMENT	50%
ELIGIBLE ENTITIES	Cities or counties in Kansas that do not receive entitlements from HUD (Entitlement areas: Johnson County, Kansas City, Lawrence, Leavenworth, Manhattan, Overland Park, Shawnee, Topeka, Wichita). CDBG awards must comply with federal requirements to primarily benefit low- and moderate-income (LMI) persons
ELIGIBLE USES	New construction of one of three pre-approved community center designs
FUNDING TIMELINE	
ANNOUNCEMENT	February
APPLICATION PERIOD	August-September
DEADLINE	September
NOTIFICATION	December
NOTES	N/A
CONTACT	Andrew.Hayman@ks.gov
MORE INFORMATION	https://www.kansascommerce.gov/cdbg/

COMMUNITY DEVELOPMENT BLOCK GRANT



Infrastructure improvements to a street in Eureka.

Economic Development

This program funds projects assisting for-profit businesses or agricultural cooperatives with infrastructure improvements, land acquisition, site preparation, building construction or renovation, machinery, equipment, lease payments, inventory, payroll and other working capital items. Eligible expenses include:

- Infrastructure improvements including roads, sidewalks, water lines and sewer lines
- Business financing for a new or existing business expanding in a Kansas community

GRANT DETAILS

PROGRAM ABBREVIATION	CDBG
FUNDING AVAILABILITY	Funding amount determined annually by Housing and Urban Development (federal funds)
2025 FUNDS AVAILABLE	\$1,000,000
MAXIMUM AWARD AMOUNT	\$750,000
MATCH REQUIREMENT	50%
ELIGIBLE ENTITIES	For-profit businesses or agricultural cooperatives in cities or counties in Kansas that do not receive entitlements from HUD (Entitlement areas: Johnson County, Kansas City, Lawrence, Leavenworth, Manhattan, Overland Park, Shawnee, Topeka, Wichita). CDBG awards must comply with federal requirements to primarily benefit low- and moderate-income (LMI) persons
ELIGIBLE USES	Infrastructure improvements including roads, sidewalks, water lines, sewer lines, etc. Business financing for a new business locating in, or an existing business expanding in, a community in Kansas
FUNDING TIMELINE	
ANNOUNCEMENT	January
APPLICATION PERIOD	Rolling
DEADLINE	Rolling
NOTIFICATION	Rolling
NOTES	N/A
CONTACT	Tim.Parks@ks.gov
MORE INFORMATION	https://www.kansascommerce.gov/cdbg/economic-development/

COMMUNITY DEVELOPMENT BLOCK GRANT

Housing Rehabilitation & Demolition or Neighborhood Development

This program provides funding to improve housing to benefit low- to moderate-income households in areas of slum and blight. Funds are targeted for housing rehabilitation/ demolition or neighborhood development. Eligible expenses include:

- Single-family/owner-occupied or rental housing rehabilitation, upper-story housing or renovation of a building to create housing
- Demolition of housing units and outbuildings on the same property
- Neighborhood development for housing rehabilitation or demolition, plus public facility improvements including street, drainage, curbs and public sidewalks
- Up to 20% of rehabilitation funds may be used in emergencies



Housing rehabilitation project in Cedar Vale.

GRANT DETAILS

PROGRAM ABBREVIATION	CDBG
FUNDING AVAILABILITY	Funding amount determined annually by Housing and Urban Development (federal funds)
2025 FUNDS AVAILABLE	\$1,000,000
MAXIMUM AWARD AMOUNT	\$500,000
MATCH REQUIREMENT	Pay for environmental review
ELIGIBLE ENTITIES	Cities or counties in Kansas that do not receive entitlements from HUD (Entitlement areas: Johnson County, Kansas City, Lawrence, Leavenworth, Manhattan, Overland Park, Shawnee, Topeka, Wichita). CDBG awards must comply with federal requirements to primarily benefit low- and moderate-income (LMI) persons
ELIGIBLE USES	Housing improvement projects to benefit low- to-moderate income households in a target area. Projects include housing rehabilitation, demolition and facility improvements
FUNDING TIMELINE	
ANNOUNCEMENT	January
APPLICATION PERIOD	Rolling
DEADLINE	Rolling
NOTIFICATION	Rolling
NOTES	N/A
CONTACT	Tim.Parks@ks.gov
MORE INFORMATION	https://www.kansascommerce.gov/cdbg/housing-rehabilitation-demolition-or-neighborhood-development/

COMMUNITY DEVELOPMENT BLOCK GRANT



Completed interior of Medicine Lodge Daycare.

Non-Profit Childcare & Early Education Facilities

To address the childcare shortage in communities, these grants provide funding for the construction or renovation of buildings, including design and planning costs. Eligible expenses include:

- Construction of a new building or renovations of an existing building to be utilized to house non-profit childcare and education facilities
- Acquisition of properties based on the Uniform Relocation Act (URA) and Real Property Acquisition Policies Act
- Engineering and architectural fees
- Administration costs for grant funds
- Does not fund operation costs

GRANT DETAILS

PROGRAM ABBREVIATION	CDBG
FUNDING AVAILABILITY	Funding amount determined annually by Housing and Urban Development (federal funds)
2025 FUNDS AVAILABLE	\$1,500,000
MAXIMUM AWARD AMOUNT	\$800,000
MATCH REQUIREMENT	25%
ELIGIBLE ENTITIES	Cities or counties in Kansas that do not receive entitlements from HUD (Entitlement areas: Johnson County, Kansas City, Lawrence, Leavenworth, Manhattan, Overland Park, Shawnee, Topeka, Wichita). CDBG awards must comply with federal requirements to primarily benefit low- and moderate-income (LMI) persons
ELIGIBLE USES	Construction or renovation of buildings to be used as non-profit childcare and education facilities
FUNDING TIMELINE	
ANNOUNCEMENT	January
APPLICATION PERIOD	August-September
DEADLINE	September
NOTIFICATION	December
NOTES	N/A
CONTACT	Andrew.Hayman@ks.gov
MORE INFORMATION	https://www.kansascommerce.gov/cdbg/non-profit-child-care-early-education-facilities/

COMMUNITY DEVELOPMENT BLOCK GRANT

Regional Water Implementation

To promote collaboration and cooperation between water systems throughout the state of Kansas, this program provides funding for consolidation of two or more water systems. Eligible expenses include:

- Projects that will result in system consolidation where two or more systems merge, resulting in one public water supply system with a single governing body
- Projects that result in the creation or expansion of a Public Wholesale Water Supply District
- Projects that benefit a minimum of two public water supply systems



Low water levels in the Little Caney River. CDBG funding will be used to provide improved water access in Coffeyville and Caney.

GRANT DETAILS

PROGRAM ABBREVIATION	CDBG
FUNDING AVAILABILITY	Funding amount determined annually by Housing and Urban Development (federal funds)
2025 FUNDS AVAILABLE	\$2,000,000
MAXIMUM AWARD AMOUNT	\$2,000,000
MATCH REQUIREMENT	50%
ELIGIBLE ENTITIES	Cities or counties in Kansas that do not receive entitlements from HUD (Entitlement areas: Johnson County, Kansas City, Lawrence, Leavenworth, Manhattan, Overland Park, Shawnee, Topeka, Wichita). CDBG awards must comply with federal requirements to primarily benefit low- and moderate-income (LMI) persons
ELIGIBLE USES	Projects that will result in system consolidation where two or more systems merge, resulting in one public water supply system with a single governing body; the creation or expansion of a Public Wholesale Water Supply District; or projects that benefit a minimum of two public water supply systems and must be primary systems not currently connected
FUNDING TIMELINE	
ANNOUNCEMENT	January
APPLICATION PERIOD	Rolling
DEADLINE	Rolling
NOTIFICATION	Rolling
NOTES	N/A
CONTACT	Andrew.Hayman@ks.gov
MORE INFORMATION	https://www.kansascommerce.gov/cdbg/water-sewer-regional-planning-grants/

COMMUNITY DEVELOPMENT BLOCK GRANT



Sidewalks & Trails

Increasing opportunities for community engagement, health, connectedness and vibrancy, this program provides funding to aid in the development of sidewalks and trails. Eligible expenses include:

- Construction of new sidewalks and trails that connect residents to community services and amenities
- Installation of benches and resting areas along the walkway
- Engineering and architectural costs and fees
- Administration costs for grant funds

A sidewalk connecting citizens to a recreational area in Goodland.

GRANT DETAILS

PROGRAM ABBREVIATION	CDBG
FUNDING AVAILABILITY	Funding amount determined annually by Housing and Urban Development (federal funds)
2025 FUNDS AVAILABLE	\$1,500,000
MAXIMUM AWARD AMOUNT	\$800,000
MATCH REQUIREMENT	25%
ELIGIBLE ENTITIES	Cities or counties in Kansas that do not receive entitlements from HUD (Entitlement areas: Johnson County, Kansas City, Lawrence, Leavenworth, Manhattan, Overland Park, Shawnee, Topeka, Wichita). CDBG awards must comply with federal requirements to primarily benefit low- and moderate-income (LMI) persons
ELIGIBLE USES	Construction of new sidewalks and trails that connect residents to services, community centers, schools and recreation areas
FUNDING TIMELINE	
ANNOUNCEMENT	January
APPLICATION PERIOD	August-September
DEADLINE	September
NOTIFICATION	December
NOTES	N/A
CONTACT	Andrew.Hayman@ks.gov
MORE INFORMATION	https://www.kansascommerce.gov/cdbg/sidewalks-trails/

COMMUNITY DEVELOPMENT BLOCK GRANT

Urgent Need for Disasters

This program helps communities address an urgent need resulting from a sudden and severe natural or other disaster where no other financial resources are available.

Eligible expenses include:

- Activities designed to meet urgent health and welfare needs for which no other financial resources are available to meet such needs
- Activities on the approved list of eligible expenditures adopted from Title I of the Housing and Community Development Act of 1974, as amended



A severe winter weather event damaged the previous Roxbury Lift Station in McPherson County, creating an urgent need for the community.

GRANT DETAILS

PROGRAM ABBREVIATION	CDBG
FUNDING AVAILABILITY	Funding amount determined annually by Housing and Urban Development (federal funds)
2025 FUNDS AVAILABLE	\$100,000
MAXIMUM AWARD AMOUNT	\$100,000
MATCH REQUIREMENT	N/A
ELIGIBLE ENTITIES	Cities or counties in Kansas that do not receive entitlements from HUD (Entitlement areas: Johnson County, Kansas City, Lawrence, Leavenworth, Manhattan, Overland Park, Shawnee, Topeka, Wichita). CDBG awards must comply with federal requirements to primarily benefit low- and moderate-income (LMI) persons
ELIGIBLE USES	Activities to meet the urgent health and welfare needs of residents after a sudden and severe natural or other disaster
FUNDING TIMELINE	
ANNOUNCEMENT	January
APPLICATION PERIOD	Rolling
DEADLINE	Rolling
NOTIFICATION	Rolling
NOTES	N/A
CONTACT	Jason.Teal@ks.gov
MORE INFORMATION	https://www.kansascommerce.gov/cdbg/urgent-need-for-disasters/

COMMUNITY DEVELOPMENT BLOCK GRANT



A CDBG-funded stormwater improvement project in Fredonia.

Water & Sewer Infrastructure

This program provides funding to assist with water and sewer infrastructure projects, with an emphasis on developing regional facilities wherever possible. Eligible expenses include:

- Improvement to water and sewer infrastructure
- Construction or rehabilitation of water towers, water wells, treatment plants and sewer lagoons
- Installation of water or sewer lines
- Purchase of easements and property using the Uniform Relocation Act (URA)
- Engineering costs related to these projects
- Administration costs for grant funds

GRANT DETAILS

PROGRAM ABBREVIATION	CDBG
FUNDING AVAILABILITY	Funding amount determined annually by Housing and Urban Development (federal funds)
2025 FUNDS AVAILABLE	\$1,000,000
MAXIMUM AWARD AMOUNT	\$800,000
MATCH REQUIREMENT	25%
ELIGIBLE ENTITIES	Cities or counties in Kansas that do not receive entitlements from HUD (Entitlement areas: Johnson County, Kansas City, Lawrence, Leavenworth, Manhattan, Overland Park, Shawnee, Topeka, Wichita). CDBG awards must comply with federal requirements to primarily benefit low- and moderate-income (LMI) persons
ELIGIBLE USES	Improvements to water and sewer infrastructure, engineering costs related to these projects and administration costs for grant funds
FUNDING TIMELINE	
ANNOUNCEMENT	January
APPLICATION PERIOD	August-September
DEADLINE	September
NOTIFICATION	December
NOTES	N/A
CONTACT	Andrew.Hayman@ks.gov
MORE INFORMATION	https://www.kansascommerce.gov/cdbg/water-sewer-infrastructure-consent-orders/

COMMUNITY DEVELOPMENT BLOCK GRANT

Youth Job Training

This program addresses the need to support youth (ages 12-19) in workforce training and engagement.

Funding provides youth with training and skill development, encouraging self-sufficiency and independence and aims to address the shortage of skilled trade workers in Kansas.



Sumner County students were equipped with tools through CDBG funding.

GRANT DETAILS

PROGRAM ABBREVIATION	CDBG
FUNDING AVAILABILITY	Funding amount determined annually by Housing and Urban Development (federal funds)
2025 FUNDS AVAILABLE	\$500,000
MAXIMUM AWARD AMOUNT	\$100,000
MATCH REQUIREMENT	10%
ELIGIBLE ENTITIES	Cities or counties in Kansas that do not receive entitlements from HUD (Entitlement areas: Johnson County, Kansas City, Lawrence, Leavenworth, Manhattan, Overland Park, Shawnee, Topeka, Wichita). CDBG awards must comply with federal requirements to primarily benefit low- and moderate-income (LMI) persons
ELIGIBLE USES	Expenses related to support youth ages 12-19 in workforce training and engagement. These include training, software, instructional materials and staff salaries
FUNDING TIMELINE	
ANNOUNCEMENT	January
APPLICATION PERIOD	August-September
DEADLINE	September
NOTIFICATION	December
NOTES	N/A
CONTACT	Jason.Teal@ks.gov
MORE INFORMATION	https://www.kansascommerce.gov/cdbg/youth-job-training/

COMMUNITY SERVICE PROGRAM TAX CREDIT



The Community Service Program (CSP) Tax Credit helps non-profit organizations and public healthcare entities fund important projects related to community improvements, children and family services, crime prevention, youth apprenticeship or training, and healthcare.

Under this program, awarded non-profits are authorized to offer tax credits to donors supporting approved projects. Organizations in rural areas (<15,000 population) can get a 70% credit, while those in urban areas (>15,000 population) get a 50% credit.

The ribbon cutting of the Kirk Davis Center in Paola. CSP tax credits were used for the state-of-the-art residential treatment facility.

GRANT DETAILS

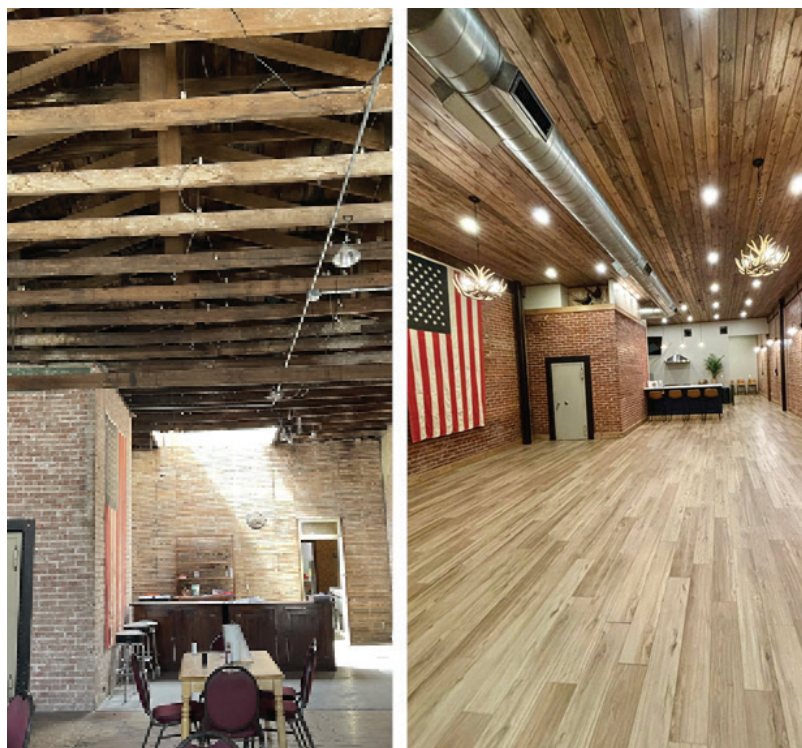
PROGRAM ABBREVIATION	CSP
FUNDING AVAILABILITY	\$4,100,000 annually in state tax credits
2025 FUNDS AVAILABLE	\$4,100,000
MAXIMUM AWARD AMOUNT	\$200,000 tax credit
MATCH REQUIREMENT	0%
ELIGIBLE ENTITIES	Kansas non-profit corporations and foundations
ELIGIBLE USES	For building purchases and renovations, equipment, educational materials and tools related to one of the following: community support services including housing, food, playgrounds, children and family services, etc.; non-governmental crime prevention; youth apprenticeship or training; and healthcare
FUNDING TIMELINE	
ANNOUNCEMENT	January
APPLICATION PERIOD	March-April
DEADLINE	April
NOTIFICATION	June
NOTES	\$250 application fee
CONTACT	Sara.Bloom@ks.gov
MORE INFORMATION	https://www.kansascommerce.gov/program/community-programs/csp/

HISTORIC ECONOMIC ASSET LIFELINE GRANT

Realizing the need to rehabilitate downtown buildings with funding that can be disbursed quickly and efficiently, the Kansas Department of Commerce created the Historic Economic Asset Lifeline (HEAL) program. HEAL focuses on projects that show potential as economic drivers in Kansas communities.

The HEAL program is designed to bring downtown buildings back into productive use as spaces for:

- New or expanding businesses
- Housing
- Arts and culture
- Childcare
- Entrepreneurship



Before and after photos of Heartland Gamebirds HEAL project located in Courtland.

GRANT DETAILS

PROGRAM ABBREVIATION	HEAL
FUNDING AVAILABILITY	\$1,500,000 annually (state funds)
2025 FUNDS AVAILABLE	\$1,500,000
MAXIMUM AWARD AMOUNT	\$100,000
MATCH REQUIREMENT	100%
ELIGIBLE ENTITIES	Designated Kansas Main Street programs, economic development corporations or chambers of commerce, cities, counties, schools, 501(c)3 or 501(c)6 organizations, local community foundations, federally recognized tribes
ELIGIBLE USES	Improvements to buildings that will become new or expanding businesses or be used for housing, arts and culture, civic engagement, childcare or allow for entrepreneurship
FUNDING TIMELINE	
ANNOUNCEMENT	November
APPLICATION PERIOD	November-January
DEADLINE	January
NOTIFICATION	April
NOTES	Application materials available year-round
CONTACT	Trisha.Purdon@ks.gov
MORE INFORMATION	https://www.kansascommerce.gov/community-development/heal/

EMERGENCY HISTORIC ECONOMIC ASSET LIFELINE GRANT



Before and after photos of McDonald Hall in Fort Scott. The E-HEAL grant helped restore the building.

Emergency Historic Economic Asset Lifeline (E-HEAL) grants are intended to bring rural downtown buildings back from imminent demolition or collapse and rehabilitate them into productive use as spaces for:

- New or expanding businesses
- Childcare
- Housing
- Arts and culture
- Entrepreneurship

Eligible projects include:

- Buildings at risk of imminent loss
- Buildings causing damage to surrounding downtown buildings
- Buildings with significant damage due to fire, storms, wind, etc.

A maximum of \$100,000 will be awarded per community.

GRANT DETAILS

PROGRAM ABBREVIATION	E-HEAL
FUNDING AVAILABILITY	\$500,000 annually (state funds)
2025 FUNDS AVAILABLE	\$500,000
MAXIMUM AWARD AMOUNT	\$100,000
MATCH REQUIREMENT	100%
ELIGIBLE ENTITIES	Designated Kansas Main Street programs, economic development corporations or chambers of commerce, cities, counties, schools, 501(c)3 or 501(c)6 organizations, local community foundations, federally recognized tribes
ELIGIBLE USES	Improvements to damaged buildings
FUNDING TIMELINE	
ANNOUNCEMENT	July
APPLICATION PERIOD	Rolling
DEADLINE	Rolling
NOTIFICATION	Within 15 days after application submission
NOTES	N/A
CONTACT	Trisha.Purdon@ks.gov
MORE INFORMATION	https://www.kansascommerce.gov/community-development/emergency-heal/

KANSAS ANGEL INVESTOR TAX CREDIT PROGRAM

This program is designed to bring together accredited angel investors with qualified Kansas companies seeking early-stage investment. The KAITC program helps provide access to capital for Kansas start-ups.

Eligible businesses must be headquartered with majority of its efforts operating in Kansas, with less than \$5,000,000 in revenue and fewer than five years of operation, with the exception of biosciences which must operate for fewer than 10 years.

Investors that are eligible for tax credits are individuals, partners and groups or S corporations that are registered with the state. Business and investor recipients are eligible to receive up to \$100,000 in tax credits per investor. Eligible investors are required to have a 50% funding match.



Greenfield Robotics in Cheney was supported by the Kansas Angel Investor Tax Credit program.

GRANT DETAILS

PROGRAM ABBREVIATION	KAITC
FUNDING AVAILABILITY	N/A
2025 FUNDS AVAILABLE	N/A
MAXIMUM AWARD AMOUNT	Up to \$100,000 in tax credits per investor
MATCH REQUIREMENT	N/A
ELIGIBLE ENTITIES	Businesses: Innovative companies headquartered and majority operated in Kansas, with less than \$5,000,000 in revenue and fewer than 5 years in operation (10 for bioscience businesses) Investors: Individuals, partners, groups or S corporations, registered with the state, with the sole purpose of making investments into other qualified Kansas business entities
ELIGIBLE USES	50% tax credit for qualified investments in registered Kansas start-up businesses
FUNDING TIMELINE	
ANNOUNCEMENT	January
APPLICATION PERIOD	Rolling
DEADLINE	Rolling
NOTIFICATION	Rolling
NOTES	Application fees apply, please see website for details
CONTACT	Romaine.Redman@ks.gov
MORE INFORMATION	https://www.kansascommerce.gov/program/taxes-and-financing/angels/

KANSAS APPRENTICESHIP TAX & GRANT ACT



Apprentices at work for Midwest Energy.

The Kansas Apprenticeship Tax & Grant Act provides an incentive fund for employers hiring registered apprentices. It is separated into three specific areas including \$7.5 million in tax credits available to for-profit businesses, \$2.5 million in grants available for non-profits and healthcare, and \$3 million in grants available for K-12 teachers.

The business tax credit for an eligible employer is up to \$2,500 until December 31, 2025 when it goes up to \$2,750 for each employed apprentice, not to exceed 20 such credits in any taxable year per eligible employer and up to four years per apprentice. The non-profit and Kansas educator grants for the eligible employer are up to \$2,750 for each employed apprentice, not to exceed 20 such grants in any taxable year per eligible employer and up to four years per apprentice.

GRANT DETAILS

PROGRAM ABBREVIATION	N/A
FUNDING AVAILABILITY	\$13,000,000 annually (state funds)
2025 FUNDS AVAILABLE	\$7,500,000 - Kansas For-Profits Business Tax Credits \$2,500,000 - Kansas Non-Profit Apprenticeship Grant \$3,000,000 - Kansas Educator Registered Apprenticeship Grant
MAXIMUM AWARD AMOUNT	\$2,500 tax credit per employed apprentice \$2,750 non-profit apprenticeship grant per employed apprentice \$2,750 Kansas Educator Registered Apprenticeship Grant per employed apprentice
MATCH REQUIREMENT	0%
ELIGIBLE ENTITIES	Non-profits with employed registered apprentices are eligible for grant dollars. For-profit, Kansas tax-paying organizations that employ registered apprentices are eligible for tax credits.
ELIGIBLE USES	Reimbursements for hiring registered apprentices
FUNDING TIMELINE	
ANNOUNCEMENT	Funding window 1: January, Funding window 2: July, Funding window 3: October
APPLICATION PERIOD	Funding window 1: January-May, Funding window 2: July-August, Funding window 3: October
DEADLINE	Funding window 1: May, Funding window 2: August, Funding window 3: October
NOTIFICATION	Funding window 1: June, Funding window 2: September, Funding window 3: November
NOTES	N/A
CONTACT	Eryn.Knecht@ks.gov
MORE INFORMATION	https://ksapprenticeship.org/resource-page/kansas-apprenticeship-tax-and-grant-act/

KANSAS APPRENTICESHIP PROJECT GRANT

This grant program is for eligible state educational institutions (as defined by K.S.A 76-711), businesses, non-profits or workforce boards with an established registered apprenticeship program for projects that will attract and retain employees and build the state workforce through registered apprenticeship.



John Deere's American Implement Full Throttle Boot Camp in Garden City prepares apprentices for their careers.

GRANT DETAILS

PROGRAM ABBREVIATION	N/A
FUNDING AVAILABILITY	Up to \$500,000 annually (state funds)
2025 FUNDS AVAILABLE	Up to \$500,000
MAXIMUM AWARD AMOUNT	\$200,000
MATCH REQUIREMENT	100%
ELIGIBLE ENTITIES	Eligible state educational institutions, businesses, non-profits or workforce boards
ELIGIBLE USES	Grant funds may be used for project needs related to technical instruction for the registered apprenticeship including tuition and material costs, marketing and other programmatic costs
FUNDING TIMELINE	
ANNOUNCEMENT	May
APPLICATION PERIOD	June-August
DEADLINE	August
NOTIFICATION	September
NOTES	N/A
CONTACT	Shonda.Anderson@ks.gov
MORE INFORMATION	https://www.kansascommerce.gov/workforce/kansasregisteredapprenticeship/registered-apprenticeship-guidelines-application/

KANSAS ARTS COMMISSION



Arts Everywhere - Arts in Education

The Arts Everywhere grant program provides funding for cultural projects, programs, exhibitions, series, arts education projects and other arts programming.

This category funds projects that support the role the arts play in all levels of education, community service and workforce development. This program provides funding for educational institutions, arts organizations and community service non-profits to use the arts to increase student success, foster creative thinking, develop critical job skills and enhance community development.

Mark Arts in Wichita presents “Art Together” open houses.

GRANT DETAILS

PROGRAM ABBREVIATION	N/A
FUNDING AVAILABILITY	Funding amount determined annually through a partnership with the National Endowment for the Arts
2025 FUNDS AVAILABLE	Up to \$275,000
MAXIMUM AWARD AMOUNT	\$10,000
MATCH REQUIREMENT	100%
ELIGIBLE ENTITIES	Kansas-based non-profit organizations, units of local governments (including schools, universities, libraries, arts agencies, etc.), federally recognized tribes
ELIGIBLE USES	Projects to promote arts and culture in education
FUNDING TIMELINE	
ANNOUNCEMENT	December
APPLICATION PERIOD	January-February
DEADLINE	February
NOTIFICATION	May
NOTES	N/A
CONTACT	Curtis.Young@ks.gov
MORE INFORMATION	https://www.kansascommerce.gov/program/kcaic/arts-everywhere-program/

KANSAS ARTS COMMISSION

Arts Everywhere - Innovative Partnerships

The Arts Everywhere grant program provides funding for cultural projects, programs, exhibitions, series, arts education projects and other arts programming.

This category supports innovative programming between Kansas arts organizations and Kansas non-arts organizations to impact a variety of community and/or economic development goals. The grantee will be one of the partner organizations.



The Norton County Arts Council and Kansas Arts Commission collaborated on the Community Skate Park Mural.

GRANT DETAILS

PROGRAM ABBREVIATION	N/A
FUNDING AVAILABILITY	Funding amount determined annually through a partnership with the National Endowment for the Arts
2025 FUNDS AVAILABLE	Up to \$275,000
MAXIMUM AWARD AMOUNT	\$20,000
MATCH REQUIREMENT	100%
ELIGIBLE ENTITIES	Kansas-based non-profit organizations, units of local governments (including schools, universities, libraries, arts agencies, etc.), federally recognized tribes
ELIGIBLE USES	Partnership projects between community arts, cultural organizations and non-arts based organizations
FUNDING TIMELINE	
ANNOUNCEMENT	December
APPLICATION PERIOD	January-February
DEADLINE	February
NOTIFICATION	May
NOTES	N/A
CONTACT	Curtis.Young@ks.gov
MORE INFORMATION	https://www.kansascommerce.gov/program/kcaic/arts-everywhere-program/

KANSAS ARTS COMMISSION



Theatre Lawrence presents the musical “Charlie and the Chocolate Factory.”

Arts Everywhere Organizational Development - Capacity Building

The Arts Everywhere grant program provides funding for cultural projects, programs, exhibitions, series, arts education projects and other arts programming.

This category provides funds for projects that increase administrative or artistic capacity. Eligible projects include, but are not limited to:

- Staff/volunteer exchange
- Professional development opportunities such as attendance at seminars and workshops
- Planning for development opportunities such as fundraising marketing
- Equipment/technology needs

GRANT DETAILS

PROGRAM ABBREVIATION	N/A
FUNDING AVAILABILITY	Funding amount determined annually through a partnership with the National Endowment for the Arts
2025 FUNDS AVAILABLE	Up to \$275,000
MAXIMUM AWARD AMOUNT	\$5,000
MATCH REQUIREMENT	100%
ELIGIBLE ENTITIES	Kansas-based non-profit arts organizations, units of local governments (including schools, universities, libraries, arts agencies, etc.), federally recognized tribes
ELIGIBLE USES	Projects that increase administrative or artistic capacity for community arts organizations
FUNDING TIMELINE	
ANNOUNCEMENT	December
APPLICATION PERIOD	January-February
DEADLINE	February
NOTIFICATION	May
NOTES	N/A
CONTACT	Curtis.Young@ks.gov
MORE INFORMATION	https://www.kansascommerce.gov/program/kcaic/arts-everywhere-program/

KANSAS ARTS COMMISSION

Arts Everywhere Organizational Development - Salary Assistance

The Arts Everywhere grant program provides funding for cultural projects, programs, exhibitions, series, arts education projects, and other arts programming.

This category can be used for the full or partial salary support for one or more positions. The positions must be critical to the mission of the organization and the organization's annual operating budget must be \$150,000 or less. Organizations can only receive this grant for up to three consecutive years.



Kansas Ballet Company performs The Nutcracker in Topeka.

GRANT DETAILS

PROGRAM ABBREVIATION	N/A
FUNDING AVAILABILITY	Funding amount determined annually through a partnership with the National Endowment for the Arts
2025 FUNDS AVAILABLE	Up to \$275,000
MAXIMUM AWARD AMOUNT	\$20,000
MATCH REQUIREMENT	100%
ELIGIBLE ENTITIES	Kansas-based non-profit arts organizations, federally recognized tribes
ELIGIBLE USES	Full or partial salary support for one or more positions
FUNDING TIMELINE	
ANNOUNCEMENT	December
APPLICATION PERIOD	January-February
DEADLINE	February
NOTIFICATION	May
NOTES	N/A
CONTACT	Curtis.Young@ks.gov
MORE INFORMATION	https://www.kansascommerce.gov/program/kcaic/arts-everywhere-program/

KANSAS ARTS COMMISSION



Arts Everywhere - Specific Arts & Culture Projects

The Arts Everywhere grant program provides funding for cultural projects, programs, exhibitions, series, arts education projects and other arts programming.

This category is designed to fund a single cultural project, program, exhibition or series. The grant activities must support the mission of the applicant organization, which may or may not be an arts and culture organization.

Dancers perform at the Mexican Heritage Festival in Garden City.

GRANT DETAILS

PROGRAM ABBREVIATION	N/A
FUNDING AVAILABILITY	Funding amount determined annually through a partnership with the National Endowment for the Arts
2025 FUNDS AVAILABLE	Up to \$275,000
MAXIMUM AWARD AMOUNT	\$10,000
MATCH REQUIREMENT	100%
ELIGIBLE ENTITIES	Kansas-based non-profit organizations, units of local governments (including schools, universities, libraries, arts agencies, etc.), federally recognized tribes
ELIGIBLE USES	Single cultural projects, programs, exhibitions or series
FUNDING TIMELINE	
ANNOUNCEMENT	December
APPLICATION PERIOD	January-February
DEADLINE	February
NOTIFICATION	May
NOTES	N/A
CONTACT	Curtis.Young@ks.gov
MORE INFORMATION	https://www.kansascommerce.gov/program/kcaic/arts-everywhere-program/

KANSAS ARTS COMMISSION

General Operating Support

The General Operating Support grant program provides funding for Kansas public and private non-profit arts and cultural organizations, including museums, local arts councils and commissions, statewide arts and cultural service organizations, and organizations that have cultural program activities in any of the art and cultural disciplines.

The organization's mission must directly support arts and cultural programming.



Opera Kansas presents a school performance in Wichita.

GRANT DETAILS

PROGRAM ABBREVIATION	N/A
FUNDING AVAILABILITY	Funding amount determined annually through a partnership with the National Endowment for the Arts
2025 FUNDS AVAILABLE	Up to \$890,000
MAXIMUM AWARD AMOUNT	\$25,000
MATCH REQUIREMENT	100%
ELIGIBLE ENTITIES	Kansas-based non-profit arts organizations, units of local governments (including schools, universities, libraries, arts agencies, etc.), federally recognized tribes
ELIGIBLE USES	Support for general program activities of an arts organization
FUNDING TIMELINE	
ANNOUNCEMENT	December
APPLICATION PERIOD	January-February
DEADLINE	February
NOTIFICATION	May
NOTES	N/A
CONTACT	Curtis.Young@ks.gov
MORE INFORMATION	https://www.kansascommerce.gov/program/kcaic/general-operating-support/

KANSAS ARTS COMMISSION



City of Caldwell’s public art project.

Public Art & Murals

The Kansas Arts Commission supports public art programs across all Kansas communities. This program is designed to utilize artists and arts organizations to increase community vibrancy and provide space for artistic expression and public engagement that in turn supports the local and state economies.

GRANT DETAILS

PROGRAM ABBREVIATION	N/A
FUNDING AVAILABILITY	Funding amount determined annually through a partnership with the National Endowment for the Arts
2025 FUNDS AVAILABLE	Up to \$100,000
MAXIMUM AWARD AMOUNT	\$10,000
MATCH REQUIREMENT	100%
ELIGIBLE ENTITIES	Kansas-based non-profit arts organizations, units of local governments (including schools, universities, libraries, arts agencies, etc.), federally recognized tribes
ELIGIBLE USES	Public art projects to utilize artists and arts organizations to increase community vibrancy and provide space for artistic expression and public engagement
FUNDING TIMELINE	
ANNOUNCEMENT	December
APPLICATION PERIOD	January-February
DEADLINE	February
NOTIFICATION	May
NOTES	N/A
CONTACT	Curtis.Young@ks.gov
MORE INFORMATION	https://www.kansascommerce.gov/program/kcaic/public-art-murals-grant/

KANSAS ARTS COMMISSION

Visiting Artists

Visiting Artists provides funding for eligible organizations to engage and deepen the impact of arts programming for local and underserved audiences through exposure to and interaction with professional visiting artists. Presenters may book artists in any discipline, not just in performing arts. Projects should strive to integrate an arts discipline into non-arts content areas; help interpret an exhibition, performance or presentation; and support community development goals and objectives.



The Opus 76 Quartet performs for the 2024 “LG Desk Concerts.”

GRANT DETAILS

PROGRAM ABBREVIATION	N/A
FUNDING AVAILABILITY	Funding amount determined annually through a partnership with the National Endowment for the Arts
2025 FUNDS AVAILABLE	Up to \$50,000
MAXIMUM AWARD AMOUNT	\$7,500
MATCH REQUIREMENT	100%
ELIGIBLE ENTITIES	Kansas-based non-profit arts organizations, units of local governments (including schools, universities, libraries, arts agencies, etc.), federally recognized tribes
ELIGIBLE USES	Bringing arts in any discipline to local Kansas communities
FUNDING TIMELINE	
ANNOUNCEMENT	December
APPLICATION PERIOD	January-February
DEADLINE	February
NOTIFICATION	May
NOTES	N/A
CONTACT	Curtis.Young@ks.gov
MORE INFORMATION	https://www.kansascommerce.gov/program/kcaic/visiting-artists/

KANSAS ARTS COMMISSION



Roster Artist Cydnee Reese performs music and poetry in Salina.

Visiting Touring Roster Artists

The Kansas Arts Commission maintains an approved Touring Roster of Kansas-based touring companies and artists. Touring artists offer public performances as well as optional services that may include workshops, master classes, lecture demonstrations, arts education components, residencies or short performances.

Communities and organizations can apply for Kansas Arts Commission funding to engage and deepen the impact of arts programming on local and under-served audiences through exposure to and interaction with professional visiting artists.

GRANT DETAILS

PROGRAM ABBREVIATION	N/A
FUNDING AVAILABILITY	Funding amount determined annually through a partnership with the National Endowment for the Arts
2025 FUNDS AVAILABLE	Up to \$50,000
MAXIMUM AWARD AMOUNT	\$8,500
MATCH REQUIREMENT	100%
ELIGIBLE ENTITIES	Kansas-based non-profit arts organizations, units of local governments (including schools, universities, libraries, arts agencies, etc.), federally recognized tribes
ELIGIBLE USES	Bringing Kansas Touring Roster artists in any discipline to local Kansas communities
FUNDING TIMELINE	
ANNOUNCEMENT	N/A
APPLICATION PERIOD	Rolling
DEADLINE	60 days prior to event
NOTIFICATION	Rolling
NOTES	N/A
CONTACT	Curtis.Young@ks.gov
MORE INFORMATION	https://www.kansascommerce.gov/program/kcaic/kansas-touring-roster/

PROOF OF CONCEPT FUND

The Proof of Concept (POC) grant is designed to fill a need for support where typical funding mechanisms are not available, acting as a bridge between federal funding for basic research and commercial seed funding by angel or venture investors.

Eligible applicants must be a Kansas registered business or a higher education institution. There will be up to \$100,000 in funding available for each quarter.

The maximum grant award amounts a recipient can receive is up to \$25,000 in funding.



The Proof of Concept fund targets the funding gap that impedes the progression of technology from research to the marketplace.

GRANT DETAILS

PROGRAM ABBREVIATION	POC
FUNDING AVAILABILITY	\$400,000 annually (state funds)
2025 FUNDS AVAILABLE	\$400,000
MAXIMUM AWARD AMOUNT	\$25,000
MATCH REQUIREMENT	N/A
ELIGIBLE ENTITIES	Kansas registered businesses or Kansas higher education institutions
ELIGIBLE USES	Technical validation, advanced testing, prototype development, commercial assessment and other technology-focused activities
FUNDING TIMELINE	
ANNOUNCEMENT	Q1: January, Q2: April, Q3: July, Q4: October
APPLICATION PERIOD	Q1: January-March, Q2: April-June, Q3: July-September, Q4: October-December
DEADLINE	Q1: March, Q2: June, Q3: September, Q4: December
NOTIFICATION	Quarterly
NOTES	If the product is successfully licensed there is a grant repayment obligation
CONTACT	Brandon.Hutton@ks.gov
MORE INFORMATION	https://www.kansascommerce.gov/program/taxes-and-financing/proof-of-concept-fund/

RESIDENTIAL OPPORTUNITIES ON MAIN STREET GRANT



The Residential Opportunities on Main Street (ROOMS) grant funds new upper-floor housing in commercial buildings in Designated Kansas Main Street communities.

Projects must incorporate Main Street design standards and follow local ordinances and codes for improvements. Each eligible applicant may receive a single \$50,000 grant.

This program has been created to address the shortage of housing in Kansas communities and to help drive more foot traffic to retail and restaurants in Kansas Main Street Districts.

The Shay Building in Sterling is a ROOMS project that will create five, one-bedroom apartments and two, two-bedroom apartments.

GRANT DETAILS

PROGRAM ABBREVIATION	ROOMS
FUNDING AVAILABILITY	\$400,000 annually (state funds)
2025 FUNDS AVAILABLE	\$400,000
MAXIMUM AWARD AMOUNT	\$50,000
MATCH REQUIREMENT	100%
ELIGIBLE ENTITIES	Designated Kansas Main Street communities only
ELIGIBLE USES	Rehabilitation of property in Designated Kansas Main Street communities that create and/or improve upper-floor space for housing
FUNDING TIMELINE	
ANNOUNCEMENT	February
APPLICATION PERIOD	March-April
DEADLINE	April
NOTIFICATION	May
NOTES	N/A
CONTACT	Scott.Sewell@ks.gov
MORE INFORMATION	https://www.kansascommerce.gov/program/community-programs/main-street/

RURAL CHAMPIONS

The Rural Champions program is designed to create a network of grassroots individuals with the necessary tools to resolve critical community needs in a quick and effective manner. These Rural Champions receive strategic training and compensation, and are paired with resources to assist them.

Developed in collaboration with the Kansas Sampler Foundation (KSF) and the Patterson Family Foundation, this program addresses critical public needs in rural communities and helps build capacity moving forward.



The 2024-2025 Rural Champions.

GRANT DETAILS

PROGRAM ABBREVIATION	N/A
FUNDING AVAILABILITY	\$550,000 annually, \$250,000 for Rural Champion Stipends, \$300,000 for projects (state funds and Patterson Family Foundation funds)
2025 FUNDS AVAILABLE	\$368,800
MAXIMUM AWARD AMOUNT	\$20,800
MATCH REQUIREMENT	25%
ELIGIBLE ENTITIES	City, county, community or economic development entity, designated Kansas Main Street program, chambers of commerce, local community foundation, federally recognized tribes, 501(c)3 or 501(c)6 organizations
ELIGIBLE USES	Eligible projects include, but are not limited to, community challenges such as childcare, housing, trails, health, placemaking, beautification, entrepreneurship, community and economic development
FUNDING TIMELINE	
ANNOUNCEMENT	May
APPLICATION PERIOD	June-August
DEADLINE	August
NOTIFICATION	September
NOTES	N/A
CONTACT	Kerri.Falletti@ks.gov
MORE INFORMATION	https://www.kansascommerce.gov/orp/ruralchampions/

RURAL MURALS



“Fowler” Rural Mural completed by Troy Freeman of Freesky Studios.

The Office of Rural Prosperity Rural Mural and public art grant is intended to utilize the arts to help bring together community members to celebrate the history and culture of the community.

This program provides funding for communities with populations of 15,000 or less to reinvigorate spaces by creating new murals or public art that incorporate the community’s history, culture, heritage, tourism or other community-led art piece.

GRANT DETAILS

PROGRAM ABBREVIATION	N/A
FUNDING AVAILABILITY	\$75,000 annually (state funds)
2025 FUNDS AVAILABLE	\$75,000
MAXIMUM AWARD AMOUNT	\$7,500
MATCH REQUIREMENT	25%
ELIGIBLE ENTITIES	Communities with a population of 15,000 or less, units of local government, economic/ community development and tourism non-profits (501c3 or 501c6), federally recognized tribes, Main Street organizations, non-profit organizations (501c3)
ELIGIBLE USES	Permanent mural or public art projects
FUNDING TIMELINE	
ANNOUNCEMENT	February
APPLICATION PERIOD	February-April
DEADLINE	April
NOTIFICATION	May
NOTES	N/A
CONTACT	Trisha.Purdon@ks.gov
MORE INFORMATION	https://www.kansascommerce.gov/orp/kansas-rural-mural/

SMALL BUSINESS R&D ACCELERATION GRANT

This grant is designed to assist small Kansas businesses with advancing a product or service to commercialization or modifying a product or service.

Eligible applicants must be a registered business with 50 or fewer full-time employees with 60% or more of the workforce located in Kansas, including contracted staff.

There will be up to \$250,000 in funding available each quarter. Recipients can receive up to \$25,000 in funding and will require a 100% funding match.

A small business in Kansas may receive one award per state fiscal year. Prospective recipients who work in public higher education are eligible for a 50/50 match grant up to \$25,000 to conduct research and development at the public institution.



Crain Co. 3D is turning new ideas into reality by creating new cement mixes for 3D printers.

GRANT DETAILS

PROGRAM ABBREVIATION	N/A
FUNDING AVAILABILITY	\$1,000,000 annually (state funds)
2025 FUNDS AVAILABLE	\$1,000,000
MAXIMUM AWARD AMOUNT	\$25,000
MATCH REQUIREMENT	100%
ELIGIBLE ENTITIES	Kansas registered businesses headquartered in Kansas with 50 or fewer full-time employees with at least 60% of its workforce in Kansas
ELIGIBLE USES	Prototype development, testing, validation, supply chain analysis, market analysis, regulatory approval testing, manufacturing molds, materials related to research, and development activity
FUNDING TIMELINE	
ANNOUNCEMENT	Q1: January, Q2: April, Q3: July, Q4: October
APPLICATION PERIOD	Q1: January-March, Q2: April-June, Q3: July-September, Q4: October-December
DEADLINE	Q1: March, Q2: June, Q3: September, Q4: December
NOTIFICATION	Quarterly
NOTES	N/A
CONTACT	Brandon.Hutton@ks.gov
MORE INFORMATION	https://www.kansascommerce.gov/rdaccelerationgrants/

STRATEGIC ECONOMIC EXPANSION & DEVELOPMENT GRANT



The grocery store in Rush County re-opened after receiving a SEED grant in the Food Retail category.

The purpose of SEED grants is to support the economic revitalization of Kansas communities under 5,000 population through investments in quality-of-life initiatives including community vibrancy projects, childcare and senior programming, libraries and food retail.

SEED grants are funded under the Technology-Enabled Fiduciary Financial Institutions Development and Expansion Act (KS Stat § 9-2324 [2021]), which was enacted in 2021 to promote and facilitate the development and growth of trust banks in Kansas; regulate fiduciary financial activities and custodial services and Kansas; and to locate trust bank office space in economic growth zones in rural Kansas.

GRANT DETAILS

PROGRAM ABBREVIATION	SEED
FUNDING AVAILABILITY	Funded through the Technology-Enabled Fiduciary Financial Institutions Development and Expansion Act of 2021
2025 FUNDS AVAILABLE	Variable upon TEFFI revenue
MAXIMUM AWARD AMOUNT	\$25,000
MATCH REQUIREMENT	10%
ELIGIBLE ENTITIES	County or municipal governments, economic development organizations, local chambers of commerce, and non-profit organizations in communities under 5,000 population
ELIGIBLE USES	Community vibrancy projects, childcare and senior programming, libraries, food retail
FUNDING TIMELINE	
ANNOUNCEMENT	August
APPLICATION PERIOD	August-October
DEADLINE	October
NOTIFICATION	December
NOTES	N/A
CONTACT	Trisha.Purdon@ks.gov
MORE INFORMATION	https://www.kansascommerce.gov/seedgrants/

TOURISM ATTRACTION DEVELOPMENT GRANT

The Attraction Development Grant program is designed to assist in developing sustainable, market-driven travel experiences within the state that will influence destination travel decisions by identifying travel customers and creating economic impact resulting from the creation of jobs, capital investment, revenue and visitation in Kansas.

Eligible projects include:

- New attraction construction
- Enhancements to an existing attraction
- New or enhanced attraction exhibits to improve a visitor experience



The Gordon Parks Museum in Fort Scott will use an Attraction Development Grant to develop a commemorative park.

GRANT DETAILS

PROGRAM ABBREVIATION	N/A
FUNDING AVAILABILITY	\$1,000,000 annually (state funds)
2025 FUNDS AVAILABLE	\$1,000,000
MAXIMUM AWARD AMOUNT	\$200,000
MATCH REQUIREMENT	60%
ELIGIBLE ENTITIES	Non-profits, government agencies, for-profit businesses, federally recognized tribes, institutions of higher education
ELIGIBLE USES	New attraction construction, enhancement to an existing attraction, new or enhanced exhibits
FUNDING TIMELINE	
ANNOUNCEMENT	Spring Round: February, Fall Round: August
APPLICATION PERIOD	Spring Round: February-April, Fall Round: August-October
DEADLINE	Spring Round: April, Fall Round: October
NOTIFICATION	Spring Round: May, Fall Round: November
NOTES	N/A
CONTACT	Bridgette.Job@ks.gov
MORE INFORMATION	https://www.travelks.com/travel-industry/programs-and-resources/grants/attraction-development-grants/

TOURISM MARKETING GRANT



Tanganyika Wildlife Park in Goddard utilizes a Tourism Marketing Grant to attract new visitors.

The Tourism Marketing Grant program is an ongoing grant program designed to assist organizations in new, innovative and dedicated tourism advertising and marketing.

Eligible projects include:

- A wide variety of marketing endeavors including digital and physical marketing materials
- Marketing planning activities such as strategic marketing plans or market research

GRANT DETAILS

PROGRAM ABBREVIATION	N/A
FUNDING AVAILABILITY	\$100,000 annually (state funds)
2025 FUNDS AVAILABLE	\$100,000
MAXIMUM AWARD AMOUNT	\$10,000
MATCH REQUIREMENT	60%
ELIGIBLE ENTITIES	Non-profits, for-profit organizations, government agencies, federally recognized tribes
ELIGIBLE USES	Variety of new tourism marketing ventures such as travel passports, travel brochures, video advertising, radio advertisements and social media advertising

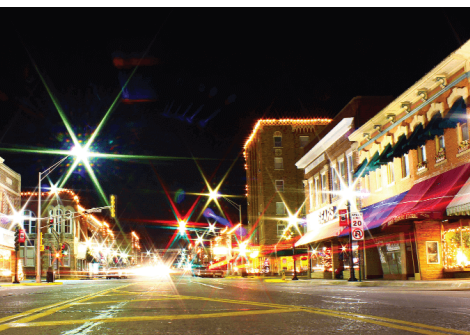
FUNDING TIMELINE

ANNOUNCEMENT	January
APPLICATION PERIOD	July-August
DEADLINE	August
NOTIFICATION	October-November

NOTES N/A

CONTACT Bridgette.Job@ks.gov

MORE INFORMATION <https://www.travelks.com/travel-industry/programs-and-resources/grants/marketing-grants/>



KANSAS

COMMERCE

PUBLISHED JANUARY 2025