

SMALL COMMUNITY CENTER

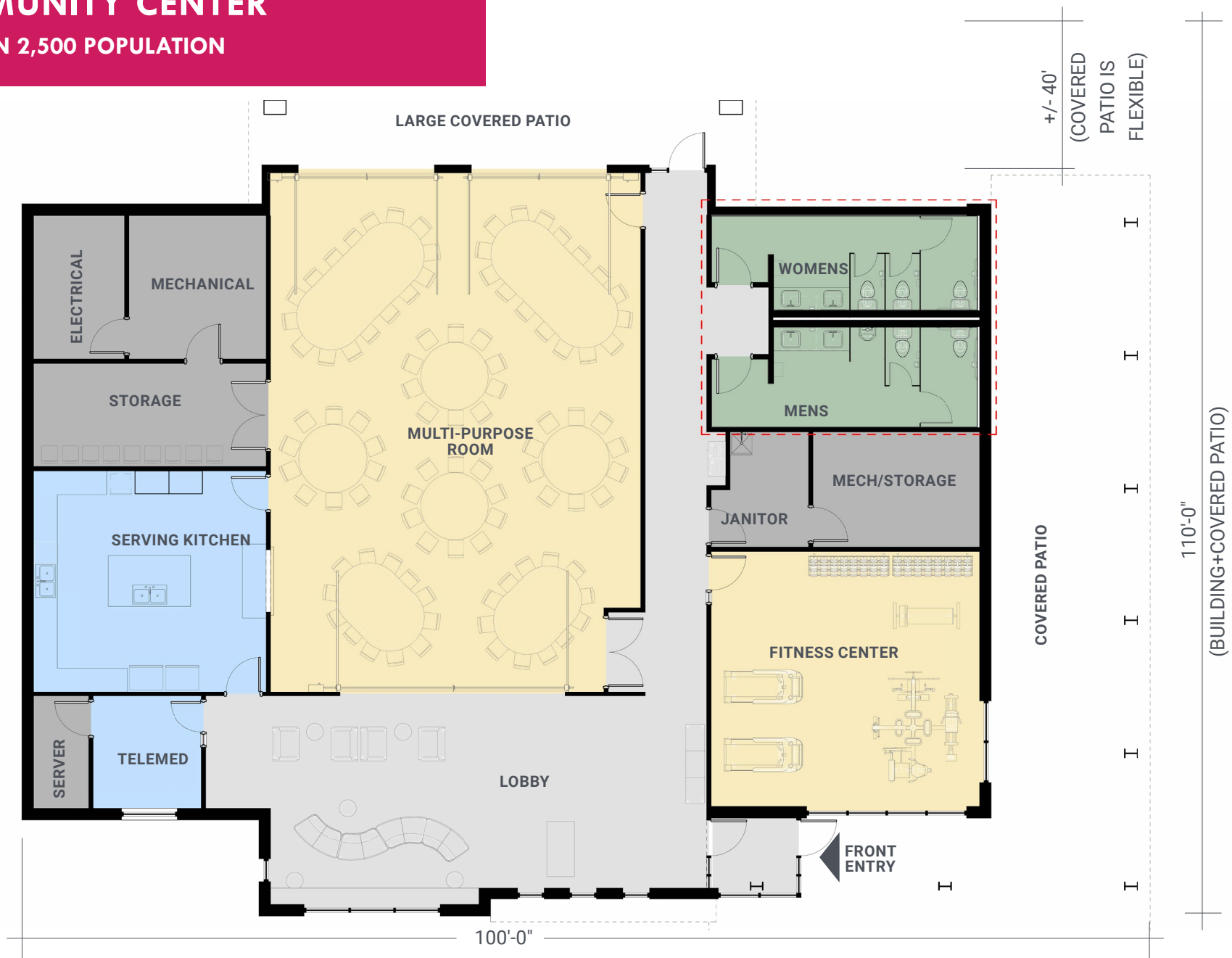
IDEAL FOR LESS THAN 2,500 POPULATION

METAL PANEL, BRICK, SIGNAGE, PAINTED COLOR ACCENTS, AND SIDING ALL CUSTOMIZABLE TO MATCH COMMUNITY AND LOCAL SCHOOL COLORS



SMALL COMMUNITY CENTER

IDEAL FOR LESS THAN 2,500 POPULATION



INCLUDED IN BUILDING COSTS

- Multi-Purpose Room, Holds 98 People Seated
- Serving Kitchen and Equipment
- Fitness Center and Workout Equipment
- Telemed Office
- Lobby with Small Gathering Space
- Restrooms with Storm Shelter
- Solar Panels on Roof
- Customizable, Durable, and Long-Lasting Exterior and Interior Finishes
- Covered Patios with Overhead Doors to the Fitness and Multi-Purpose Rooms
- Site Allowance of \$60/sf
- Furniture

Total Square Feet 5,185 SF
Building Footprint 100' by 110'
Fits on Four 135' by 25' City Lots
Suggested Parking within 6 blocks 30 Standard, 2 ADA

Estimated Building Cost: \$3,100,000

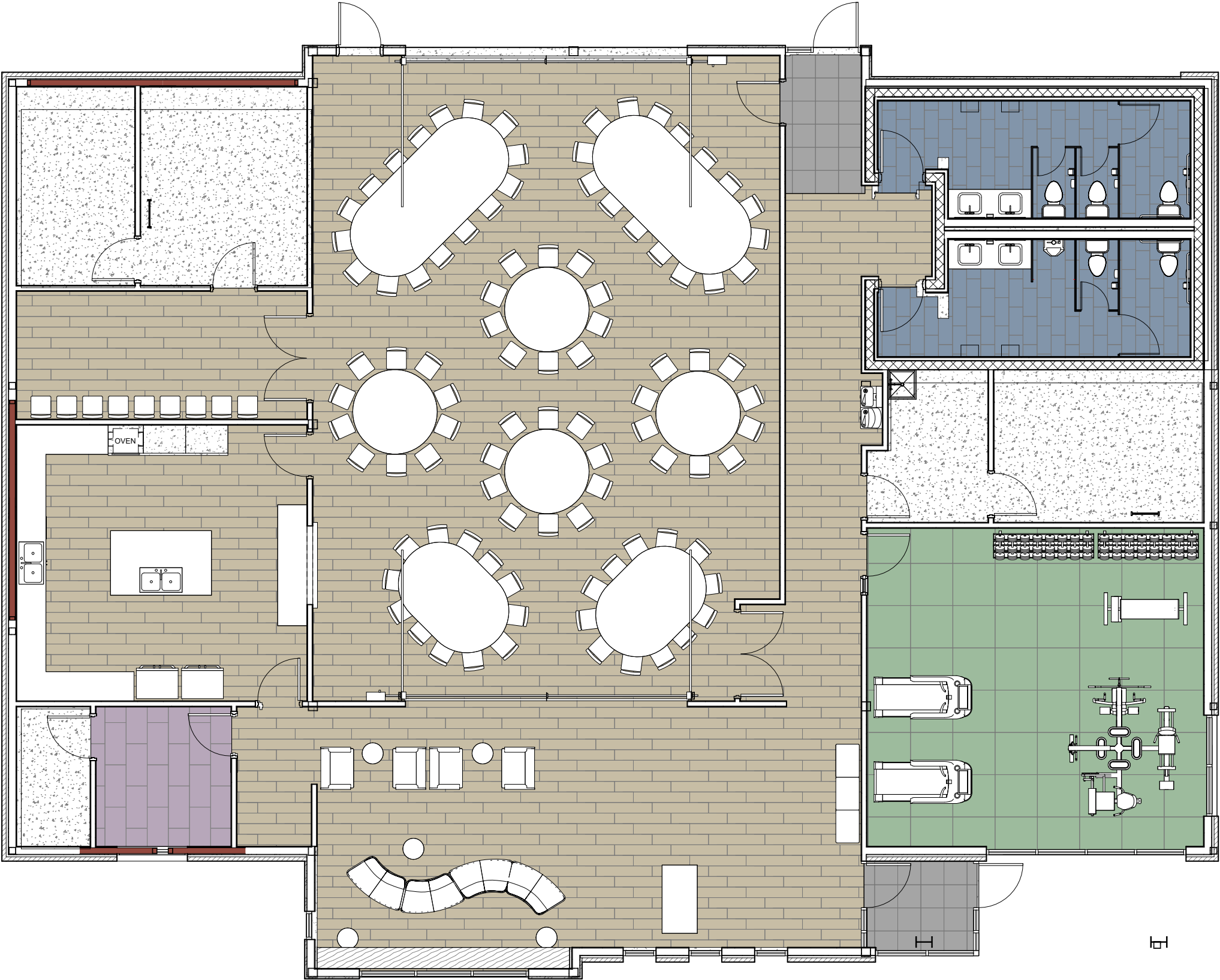
PROGRAM LEGEND

- Semi-Private Spaces
- Public Spaces
- Circulation
- Restrooms
- Support Spaces



SMALL COMMUNITY CENTER

IDEAL FOR LESS THAN 2,500 POPULATION



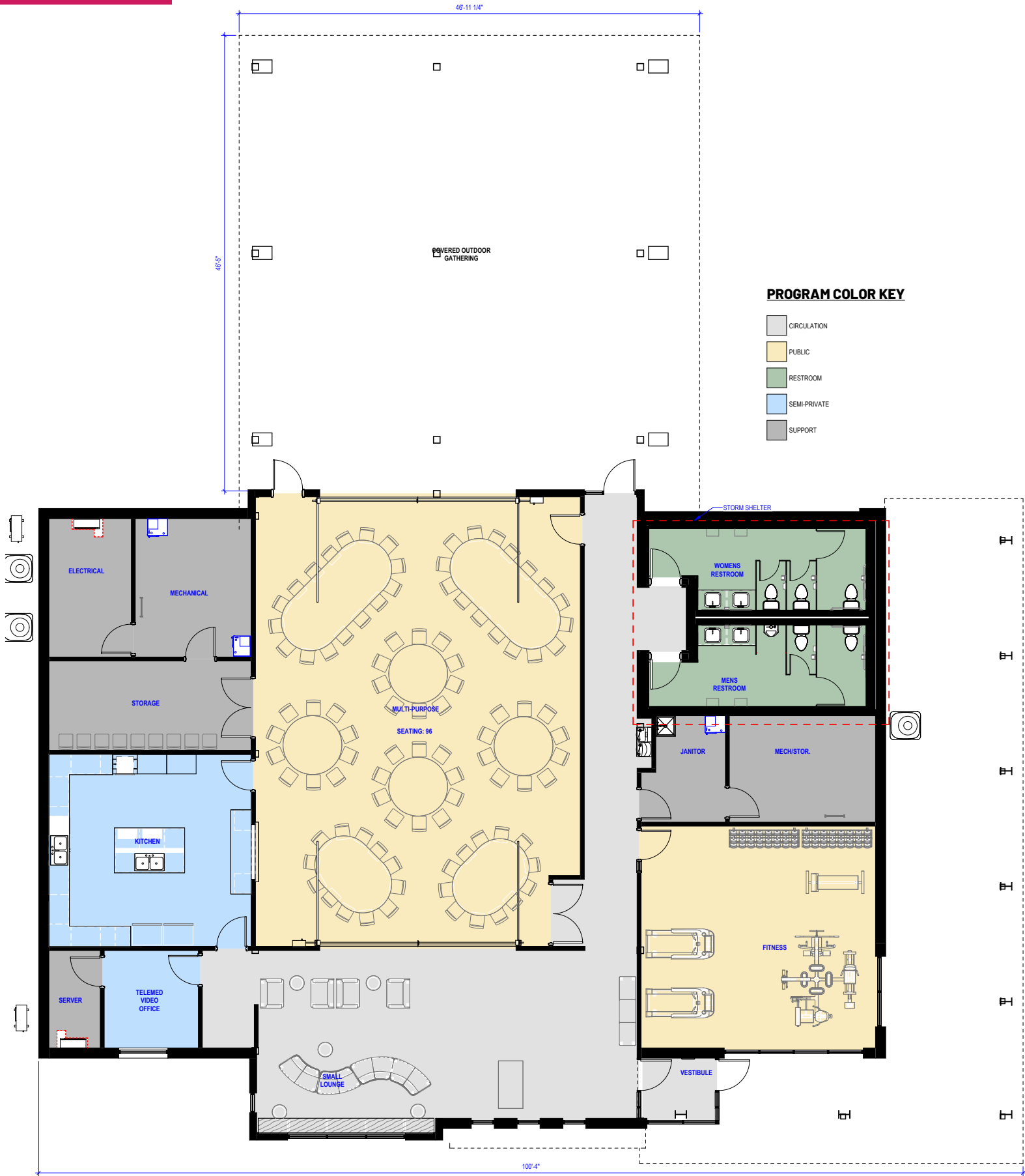
FINISH PLAN KEY

- PNTX-2
- PNTX-3
- PNTX-4
- PNTX-X
- PNTX-X

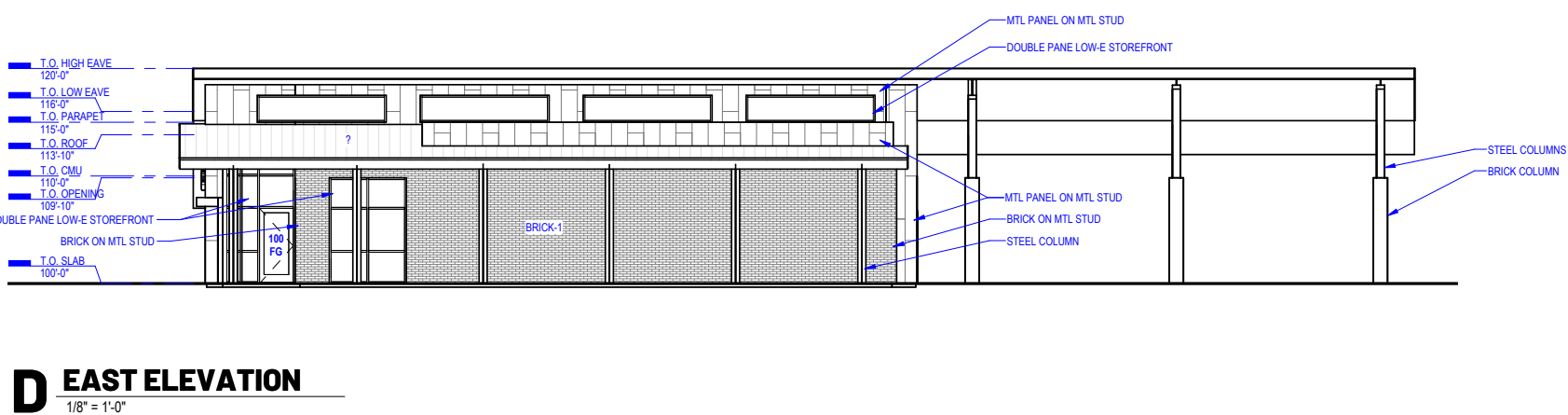
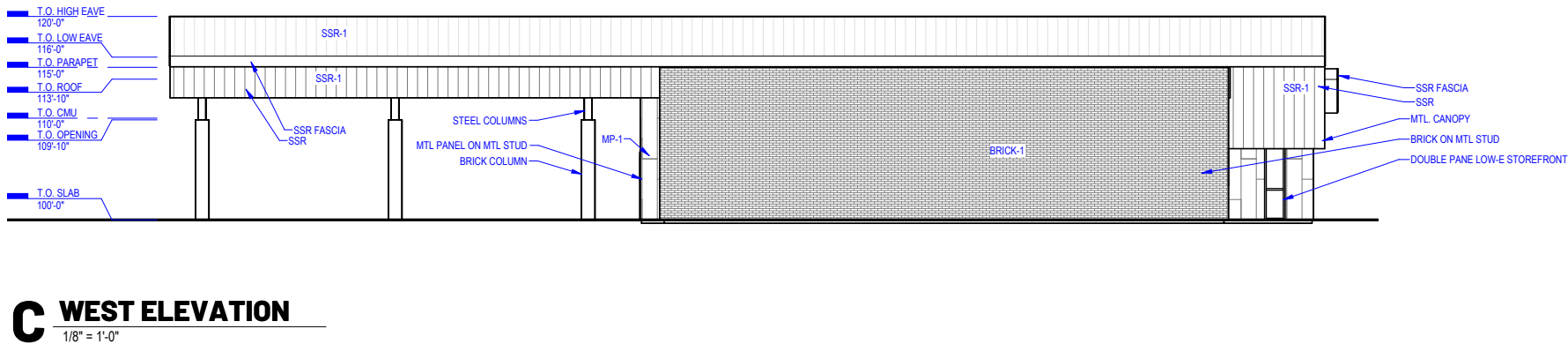
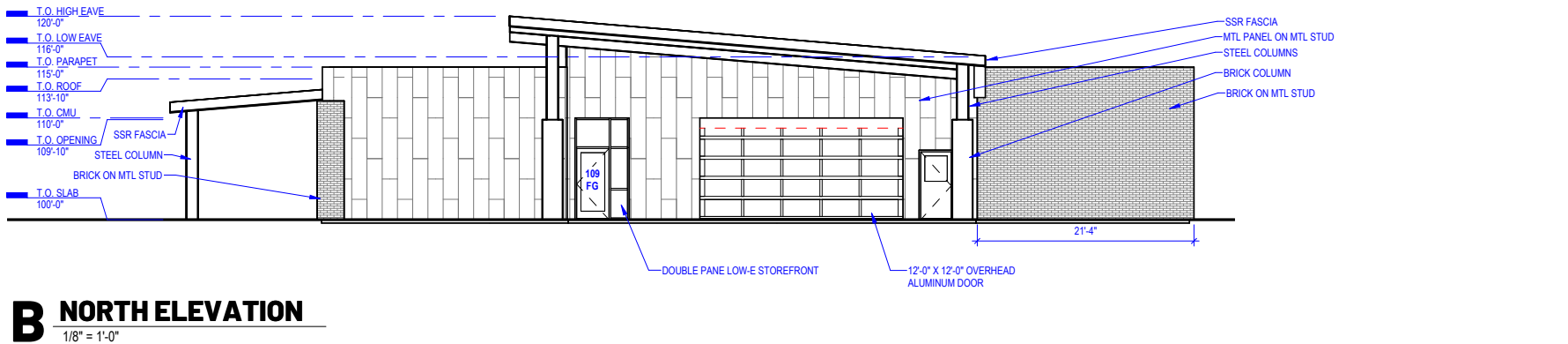
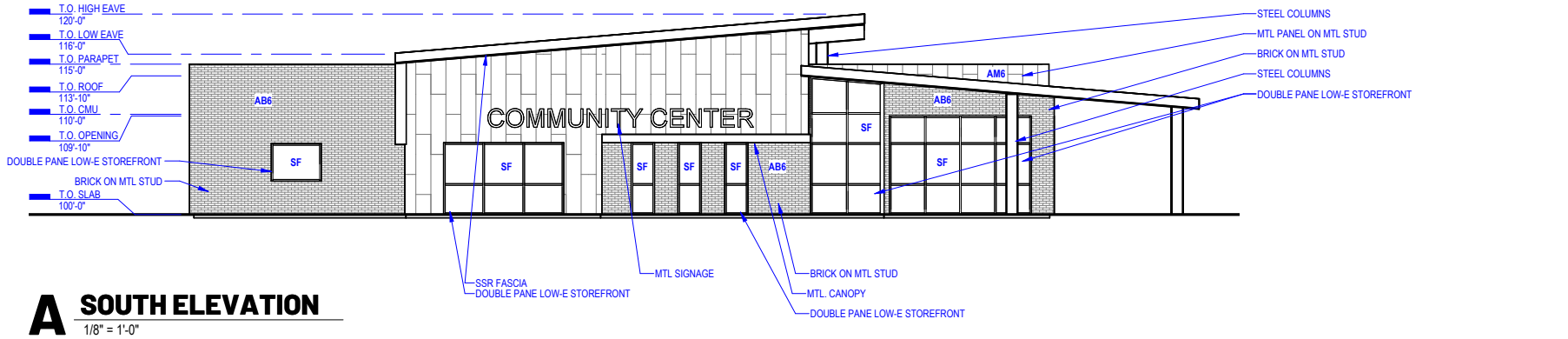
SC-1	LVT-1
WOC-1	FT-1
CPT-1	SF-1

SMALL COMMUNITY CENTER

IDEAL FOR LESS THAN 2,500 POPULATION



SMALL COMMUNITY CENTER
IDEAL FOR LESS THAN 2,500 POPULATION



MEDIUM COMMUNITY CENTER

IDEAL FOR 2,500+ POPULATION

METAL PANEL, BRICK, SIGNAGE, PAINTED COLOR ACCENTS, AND SIDING ALL CUSTOMIZABLE TO MATCH COMMUNITY AND LOCAL SCHOOL COLORS



MEDIUM COMMUNITY CENTER
GYM OPTION



INCLUDED IN BUILDING COSTS

- Gymnasium with Sports Flooring and Space for 1 High School Basketball Court, 2 Cross Courts, 2 Volleyball Courts, 2 Pickleball Courts, Perimeter Walking Track, and Optional Divider Curtain
- Multi-Purpose Room with Optional Movable Wall, Seats 128
- Serving Kitchen and Equipment
- Fitness Center and Workout Equipment
- Telemed Office
- Lobby with Small Gathering Space
- Viewing Lobby into Gymnasium
- Locker Rooms with Storm Shelter
- Fire Suppression
- Solar Panels on Roof
- Customizable, Durable, and Long-Lasting Exterior and Interior Finishes
- Covered Patio with Overhead Doors to the Fitness and Multi-Purpose Rooms
- Site Allowance of \$60/sf
- Furniture
- Architectural and Engineering Fees

Total Square Feet 16,747 SF
Building Footprint 112' by 200'
Fits on Eight 135' by 25' City Lots
Suggested Parking within 6 blocks 67 Standard, 3 ADA

Estimated Building Cost: \$7,500,000

PROGRAM LEGEND

- Semi-Private Spaces
- Public Spaces
- Circulation
- Restrooms / Locker Rooms
- Support Spaces



MEDIUM COMMUNITY CENTER
POOL OPTION



INCLUDED IN BUILDING COSTS

- Aquatics Center with 3 Lane Lap Pool, Water Slide, Zero Entry with Water Sprayers and 2 Play Structures
- Multi-Purpose Room with Optional Movable Wall, Seats 128
- Serving Kitchen and Equipment
- Fitness Center and Workout Equipment
- Telemed Office
- Lobby with Small Gathering Space
- Viewing Lobby into Gymnasium
- Locker Rooms with Storm Shelter
- Fire Suppression
- Solar Panels on Roof
- Customizable, Durable, and Long-Lasting Exterior and Interior Finishes
- Covered Patio with Overhead Doors to the Fitness and Multi-Purpose Rooms
- Site Allowance of \$60/sf
- Furniture
- Architectural and Engineering Fees

Total Square Feet 16,747 SF
Building Footprint 112' by 200'
Fits on Eight 135' by 25' City Lots
Suggested Parking within 6 blocks 67 Standard, 3 ADA

Estimated Building Cost: \$9,650,000

PROGRAM LEGEND

- Semi-Private Spaces
- Public Spaces
- Circulation
- Restrooms / Locker Rooms
- Support Spaces
- Pool



MEDIUM COMMUNITY CENTER

EXAMPLE SHOWING THE GYM OPTION



BUILDING INFORMATION

TOTAL SQUARE FEET: 16,175 SF
PARKING STALLS:
ADA: 3
STANDARD: 67

AMENITY OPTIONS INCLUDED:

- STORM SHELTER (RESTROOMS)
- SOLAR PANELS
- 1 GYM
- 1 LARGE MULTI-PURPOSE ROOM

AMENITY OPTIONS TO CONFIGURE:

- 1 AQUATICS & 0 GYMS
- 1 LARGE MULTI-PURPOSE ROOM OR 2 SMALLER MULTI-PURPOSE ROOMS/CLASSROOMS
- FINISH SELECTION COLORS PER COMMUNITY CHOICE
- REDUCED OVERHANG
- UPGRADED KITCHEN

PROGRAM COLOR KEY

- CIRCULATION
- PUBLIC
- RESTROOMS
- SEMI-PRIVATE
- SUPPORT

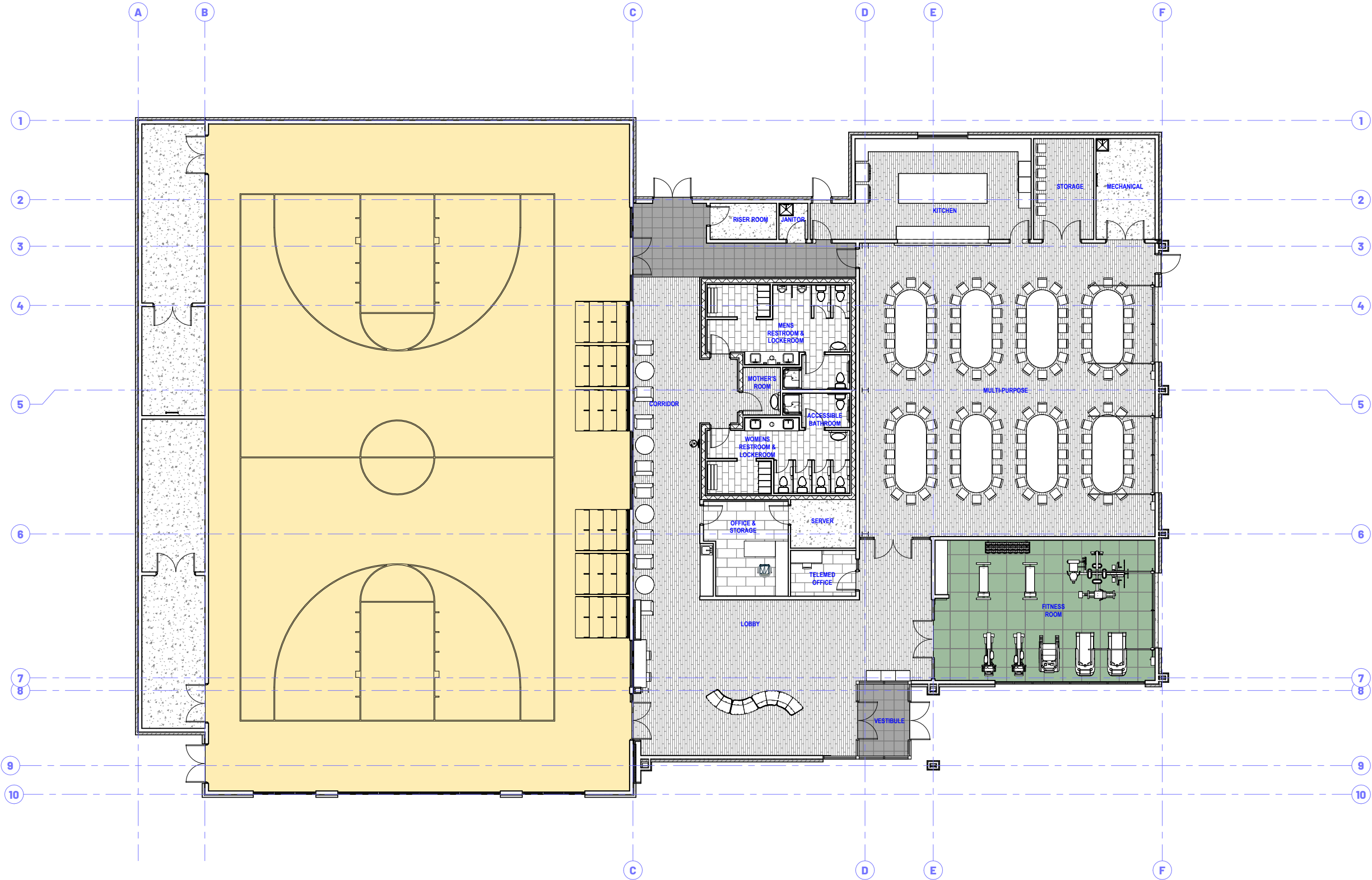
APPROVED BY OWNER

DRAWINGS HAVE BEEN REVIEWED AND ARE APPROVED FOR DESIGN DEVELOPMENT AND CONSTRUCTION DOCUMENTATION. MAJOR MODIFICATIONS MAY RESULT IN CHANGES TO CONSTRUCTION BUDGET, DESIGN FEE, AND/OR SCHEDULE.

OWNER SIGNATURE

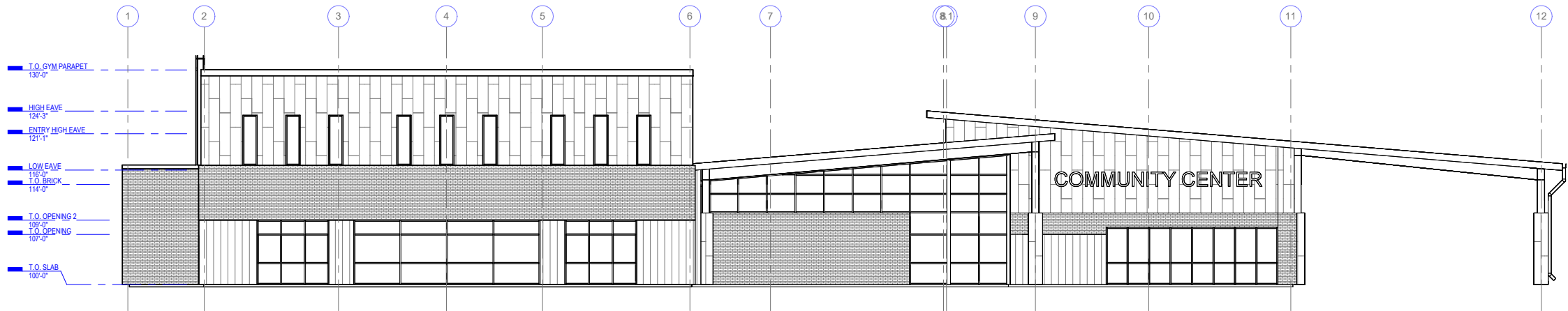
DATE

MEDIUM COMMUNITY CENTER
EXAMPLE SHOWING THE GYM OPTION

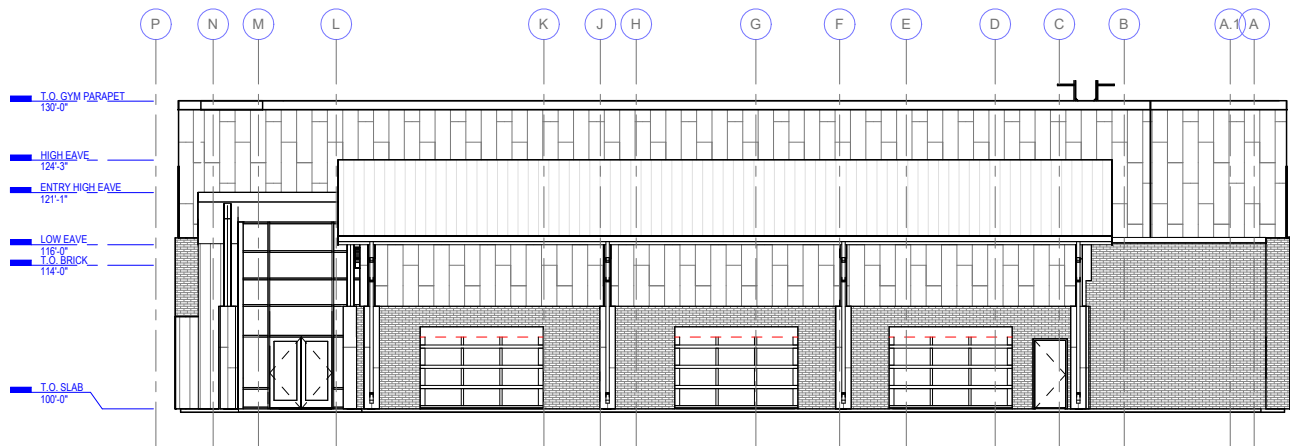


MEDIUM COMMUNITY CENTER

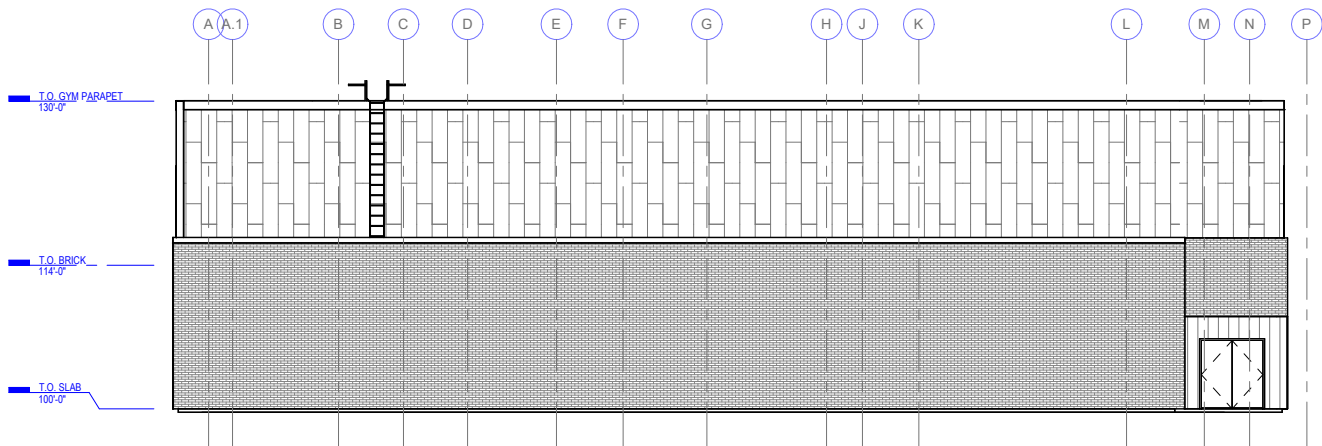
IDEAL FOR 2,500+ POPULATION



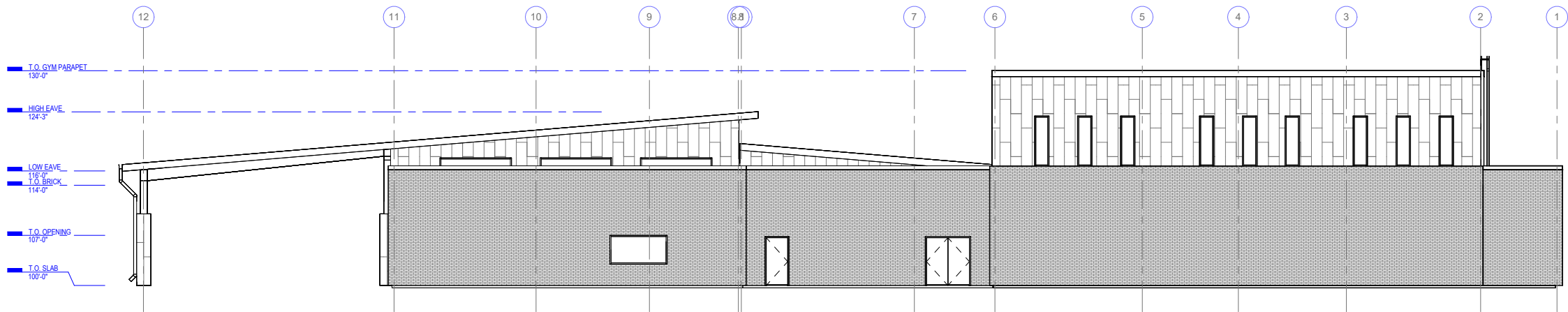
A STREET EXTERIOR ELEVATION
1/8" = 1'-0" SITE SPECIFIC



B SIDE STREET EXTERIOR ELEVATION
1/8" = 1'-0" SITE SPECIFIC



C PARTY WALL EXTERIOR ELEVATION
1/8" = 1'-0" SITE SPECIFIC



D ALLEY EXTERIOR ELEVATION
1/8" = 1'-0" SITE SPECIFIC

LARGE COMMUNITY CENTER

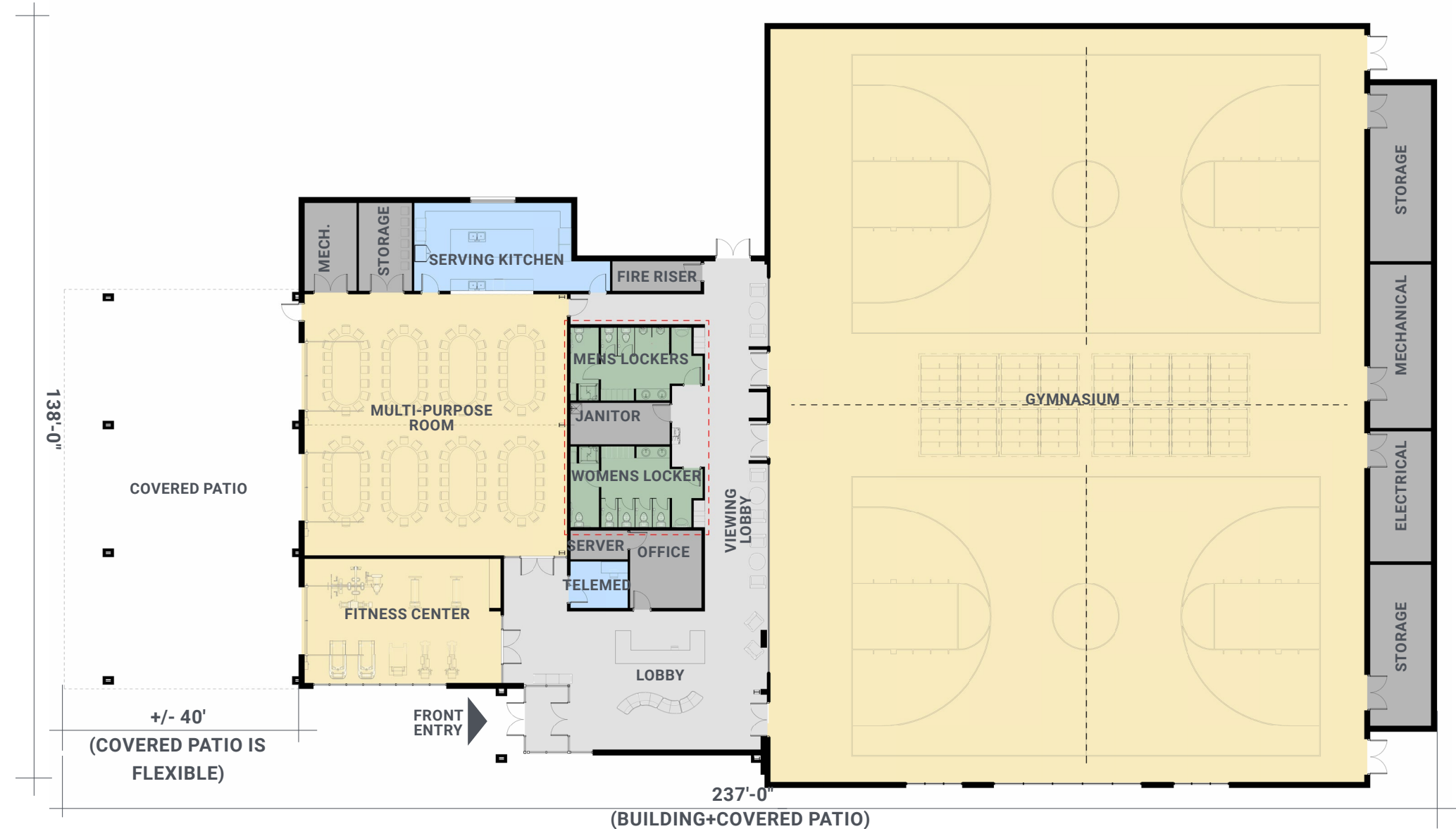
IDEAL FOR 2,500+ POPULATION

METAL PANEL, BRICK, SIGNAGE, PAINTED COLOR ACCENTS, AND SIDING ALL CUSTOMIZABLE TO MATCH COMMUNITY AND LOCAL SCHOOL COLORS



LARGE COMMUNITY CENTER

TWO GYMS OPTION



INCLUDED IN BUILDING COSTS

- Gymnasium with Sports Flooring and Space for 2 High School Basketball Courts, 4 Cross Courts, 4 Volleyball Courts, 4 Pickleball Courts, Perimeter Walking Track and Optional Divider Curtains
- Multi-Purpose Room with Optional Movable Wall, Seats 128
- Serving Kitchen and Equipment
- Fitness Center and Workout Equipment
- Telemed Office
- Lobby with Small Gathering Space
- Viewing Lobby into Gymnasium
- Locker Rooms with Storm Shelter
- Fire Suppression
- Solar Panels on Roof
- Customizable, Durable, and Long-Lasting Exterior and Interior Finishes
- Covered Patio with Overhead Doors to the Fitness and Multi-Purpose Rooms
- Site Allowance of \$50/sf
- Furniture
- Architectural and Engineering Fees

Total Square Feet 23,950 SF
Building Footprint 138' by 237'
Fits on Ten 135' by 25' City Lots
Suggested Parking within 6 blocks 86 Standard, 4 ADA

Estimated Building Cost: \$8,830,000

PROGRAM LEGEND

- Semi-Private Spaces
- Public Spaces
- Circulation
- Restrooms / Locker Rooms
- Support Spaces



LARGE COMMUNITY CENTER

GYM AND POOL OPTION



INCLUDED IN BUILDING COSTS

- Gymnasium with Sports Flooring and Space for 1 High School Basketball Courts, 2 Cross Courts, 2 Volleyball Courts, 2 Pickleball Courts, Perimeter Walking Track and Optional Divider Curtains
 - Aquatics Center with 3 Lane Lap Pool, Water Slide, Zero Entry with Water Sprayers and 2 Play Structures
 - Multi-Purpose Room with Optional Movable Wall, Seats 128
 - Serving Kitchen and Equipment
 - Fitness Center and Workout Equipment
 - Telemed Office
 - Lobby with Small Gathering Space
 - Viewing Lobby into Gymnasium
 - Locker Rooms with Storm Shelter
 - Fire Suppression
 - Solar Panels on Roof
 - Customizable, Durable, and Long-Lasting Exterior and Interior Finishes
 - Covered Patio with Overhead Doors to the Fitness and Multi-Purpose Rooms
 - Site Allowance of \$50/sf
 - Furniture
 - Architectural and Engineering Fees
- Total Square Feet** 23,950 SF
Building Footprint 138' by 237'
Fits on Ten 135' by 25' City Lots
Suggested Parking within 6 blocks 86 Standard, 4 ADA

Estimated Building Cost: \$10,750,000

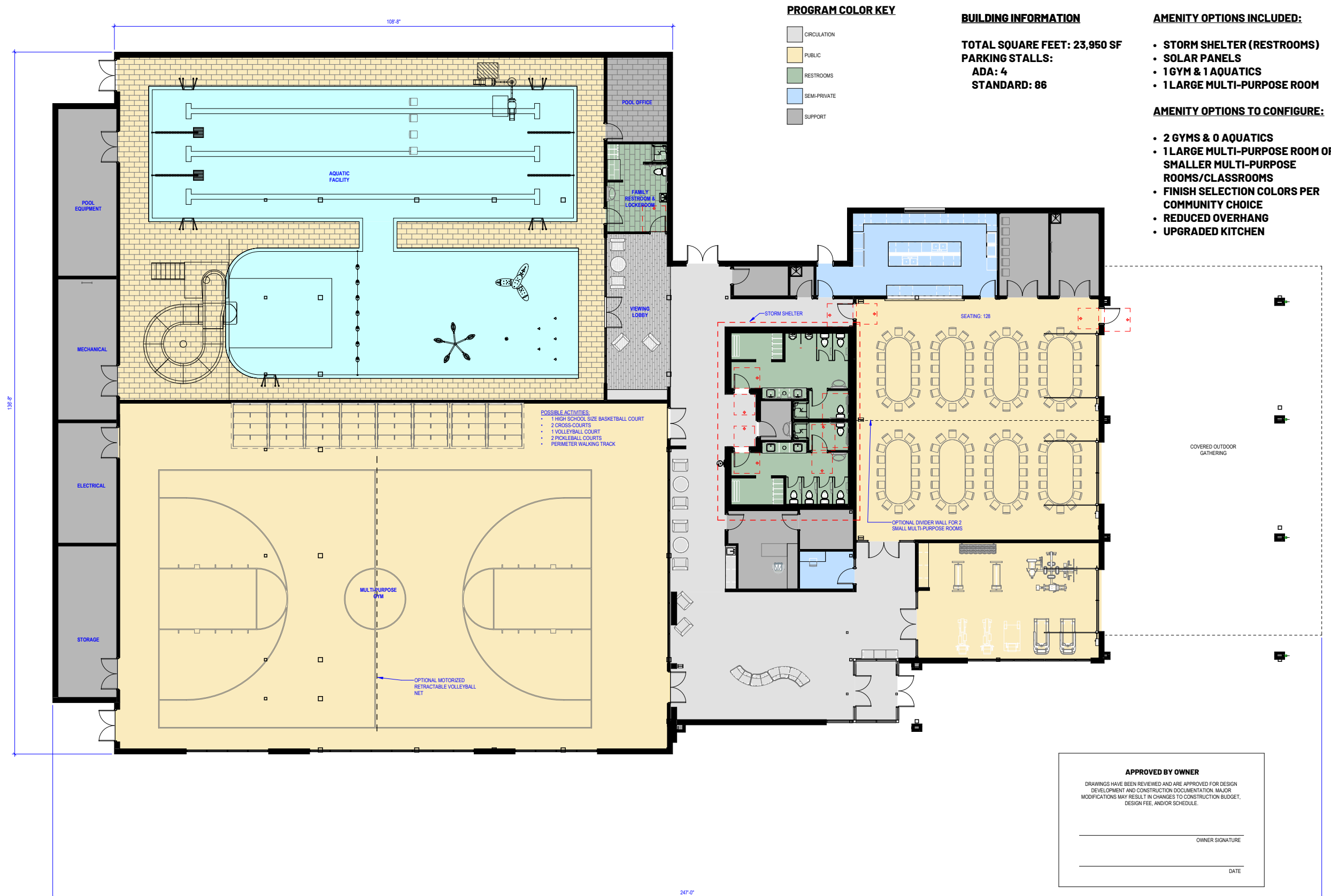
PROGRAM LEGEND

- Semi-Private Spaces
- Public Spaces
- Circulation
- Restrooms / Locker Rooms
- Support Spaces
- Pool

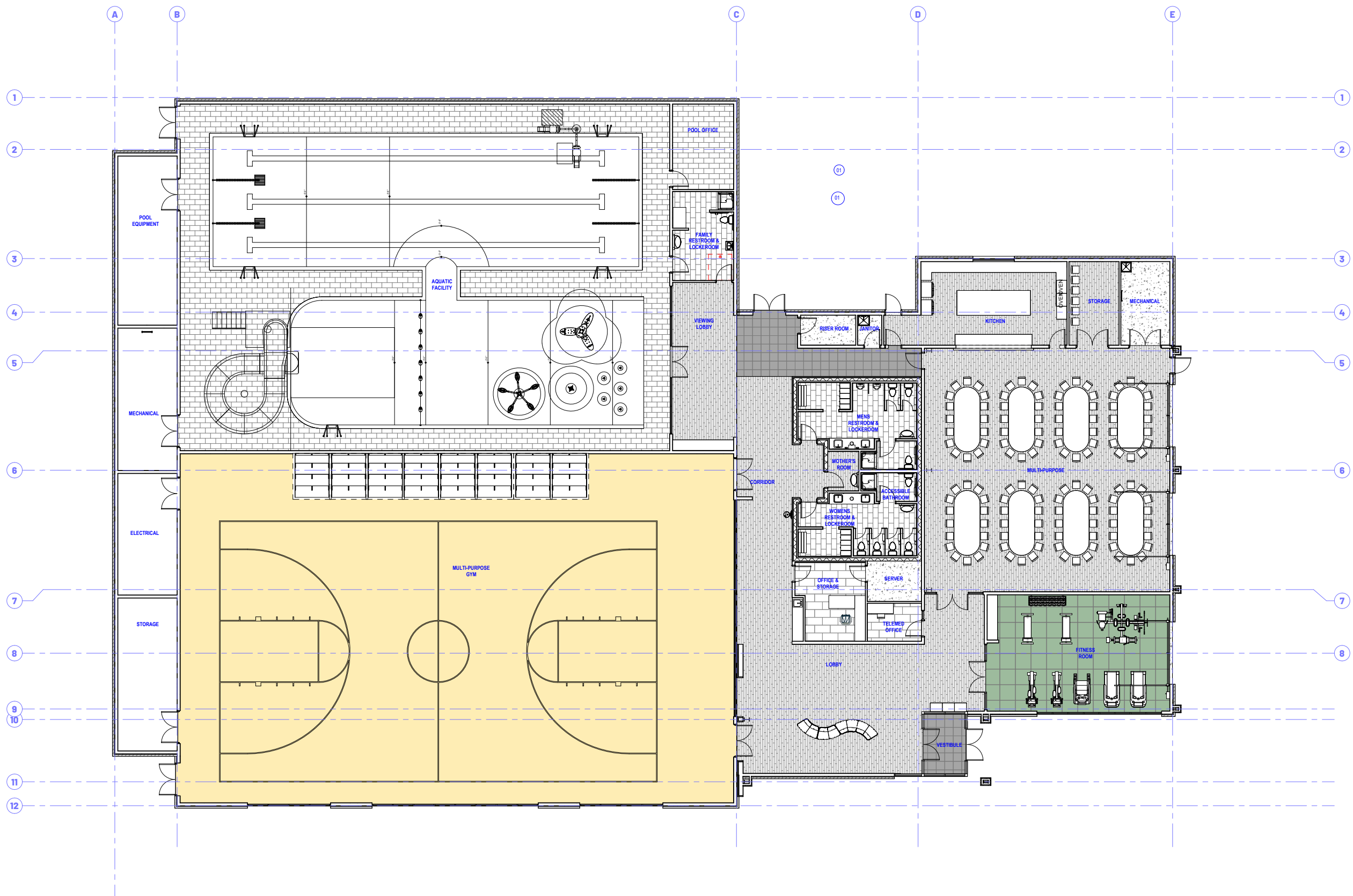


LARGE COMMUNITY CENTER

EXAMPLE SHOWING THE GYM AND POOL OPTION

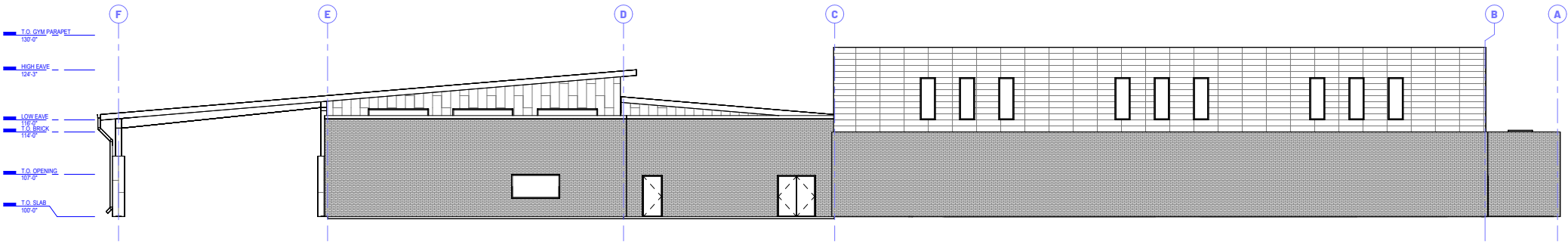


LARGE COMMUNITY CENTER
EXAMPLE SHOWING THE GYM AND POOL OPTION

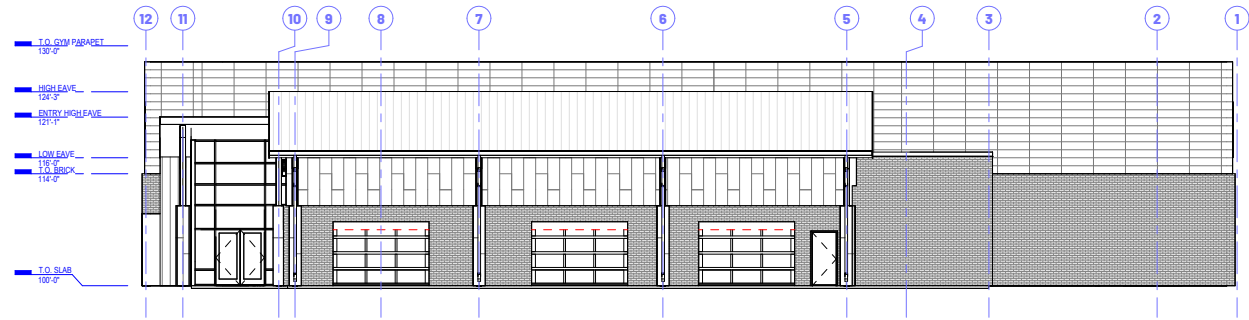


LARGE COMMUNITY CENTER

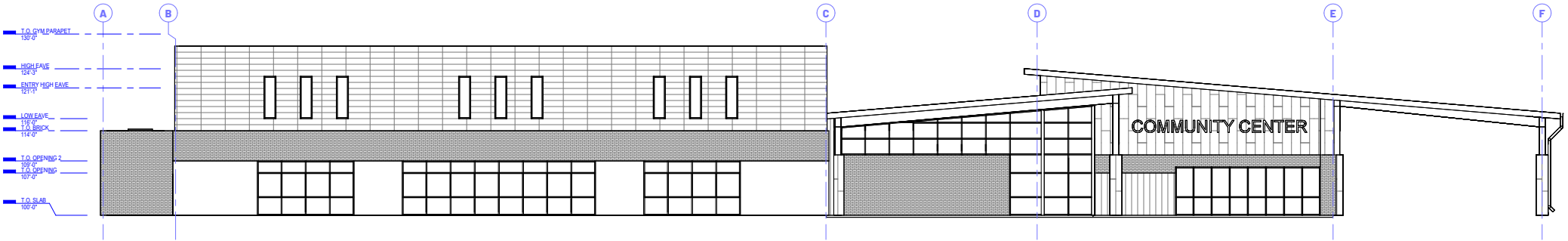
IDEAL FOR 2,500+ POPULATION



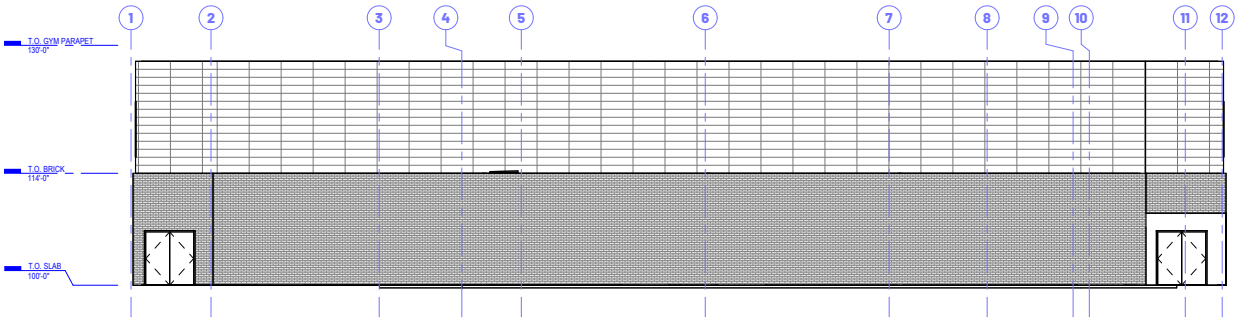
A NORTH ELEVATION
1/8" = 1'-0"



B EAST ELEVATION
1/8" = 1'-0"



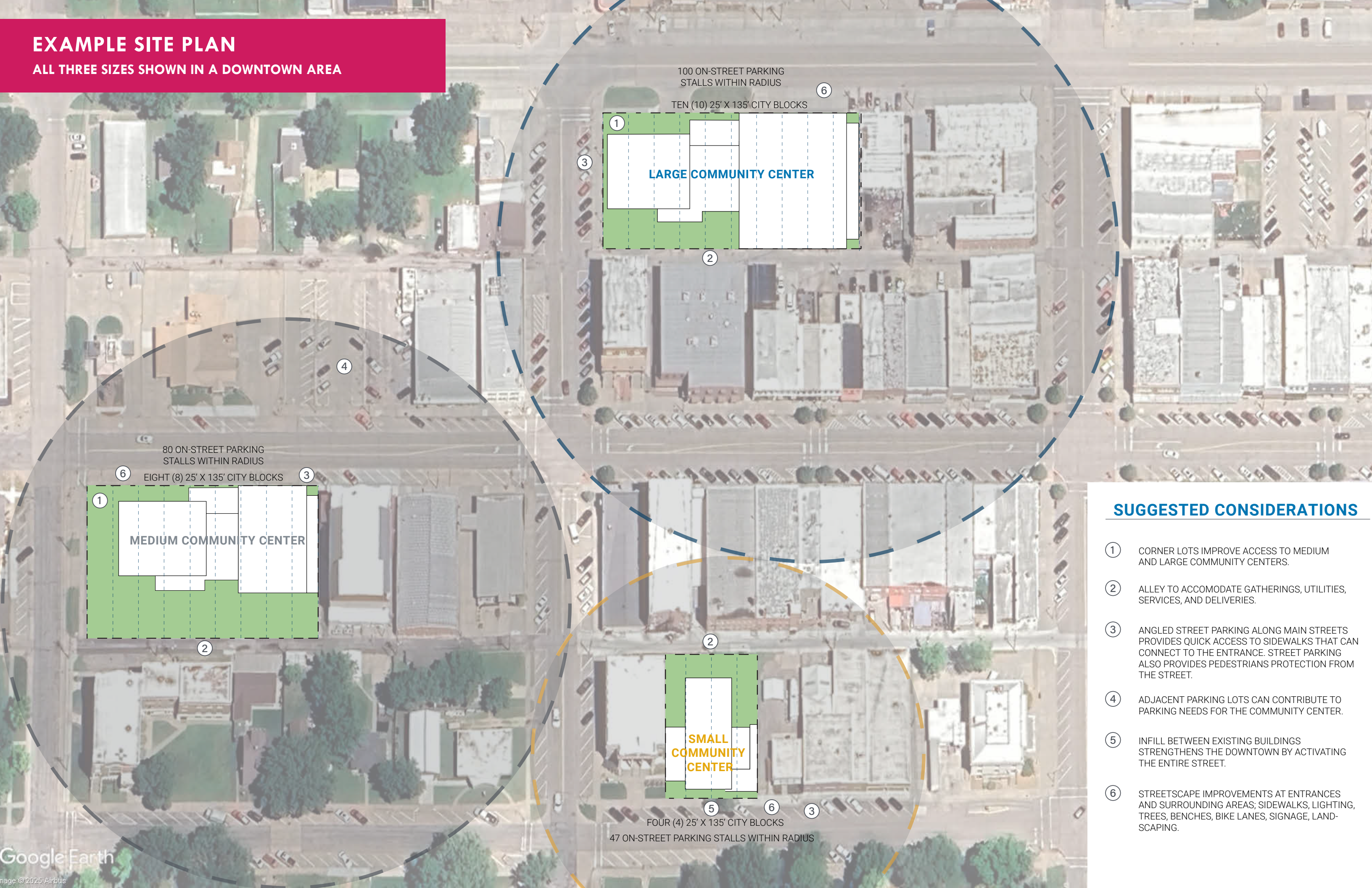
C SOUTH ELEVATION
1/8" = 1'-0"



D WEST ELEVATION
1/8" = 1'-0"

EXAMPLE SITE PLAN

ALL THREE SIZES SHOWN IN A DOWNTOWN AREA



SUGGESTED CONSIDERATIONS

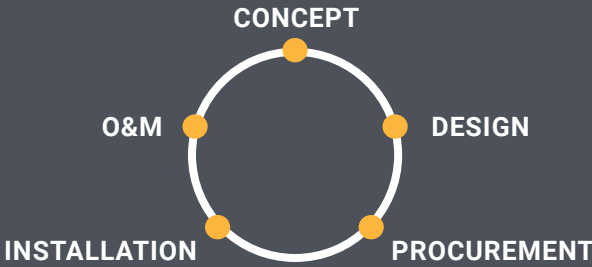
- 1 CORNER LOTS IMPROVE ACCESS TO MEDIUM AND LARGE COMMUNITY CENTERS.
- 2 ALLEY TO ACCOMODATE GATHERINGS, UTILITIES, SERVICES, AND DELIVERIES.
- 3 ANGLED STREET PARKING ALONG MAIN STREETS PROVIDES QUICK ACCESS TO SIDEWALKS THAT CAN CONNECT TO THE ENTRANCE. STREET PARKING ALSO PROVIDES PEDESTRIANS PROTECTION FROM THE STREET.
- 4 ADJACENT PARKING LOTS CAN CONTRIBUTE TO PARKING NEEDS FOR THE COMMUNITY CENTER.
- 5 INFILL BETWEEN EXISTING BUILDINGS STRENGTHENS THE DOWNTOWN BY ACTIVATING THE ENTIRE STREET.
- 6 STREETScape IMPROVEMENTS AT ENTRANCES AND SURROUNDING AREAS; SIDEWALKS, LIGHTING, TREES, BENCHES, BIKE LANES, SIGNAGE, LANDSCAPING.

SOLAR OPTIONS INCLUDED IN ESTIMATED BUILDING COSTS



ENERGY SERVICES

Optional full-service turnkey PV solar installation, including: systems design, equipment procurement, installation and operations/maintenance.



SMALL COMMUNITY SOLAR OPTION

30kW system or 65 panels

Approximate Cost (system can be scaled down to reduce cost)	\$70,000
Energy Offset (System can be scaled down to reduce cost)	Approaching 100% of total use
Approximate Annual Production	42,000kWh (equal to powering four homes for one year)
Estimated Savings Over Life of System	\$200,000

MID-SIZE COMMUNITY SOLAR OPTION

96kW system or 200 panels

Approximate Cost (system can be scaled down to reduce cost)	\$215,000
Energy Offset	Approaching 100% of total use
Approximate Annual Production	134,400kWh (equal to powering 13 homes for one year)
Estimated Savings Over Life of System	\$640,000

LARGER COMMUNITY SOLAR OPTION

132kW system or 275 panels

Approximate Cost (system can be scaled down to reduce cost)	\$300,000
Energy Offset	Approaching 100% of total use
Approximate Annual Production	184,800kWh (equal to powering 18 homes for one year)
Estimated Savings Over Life of System	\$875,000