

**Strategic Economic Expansion and
Development (SEED) Grant**

Application Webinar

Trisha Purdon

Office of Rural Prosperity

Rachel Willis

Kansas Department of Commerce

Maren Lagaly

Office of Rural Prosperity

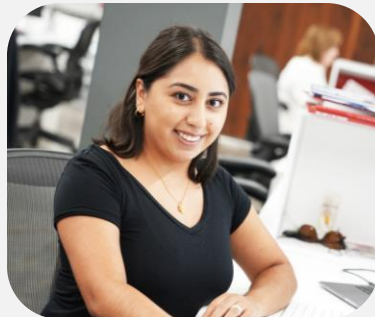
Cassie Alexander

Office of Rural Prosperity

KANSAS
COMMERCE

Overview

- Purpose
- Grant Guidelines
- Timeline
- Eligibility Requirements
- Eligible Projects
- Application Components





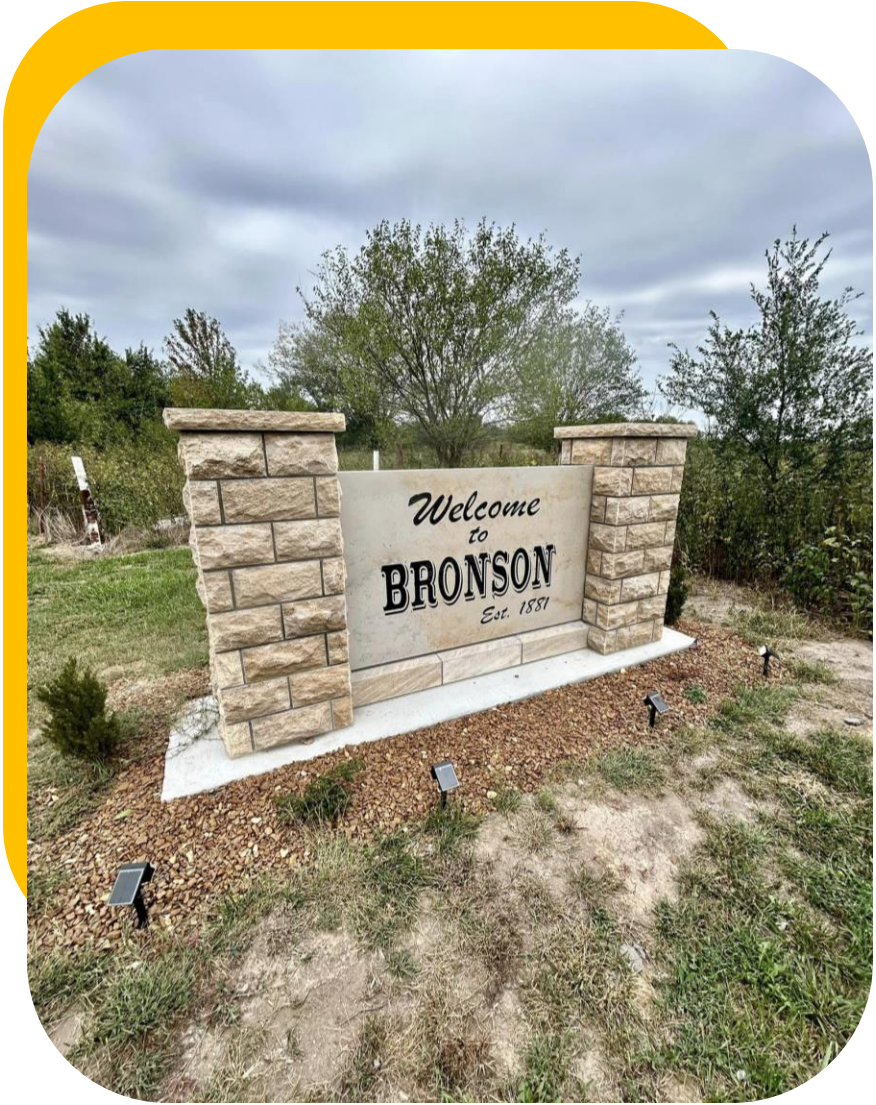
Purpose

The purpose of TEFFI: SEED grants are to support the economic revitalization of Kansas communities under 5,000 population through investments in quality-of-life initiatives.

TEFFI: SEED grants are funded under the Technology-Enabled Fiduciary Financial Institutions Development and Expansion Act (KSA 09-2324), which was enacted in 2021 to promote and facilitate the development and growth of trust banks in Kansas; regulate fiduciary financial activities and custodial services in Kansas; and to locate trust bank office space in economic growth zones in rural Kansas.

The TEFFI: SEED grant program is administered by the Kansas Department of Commerce.





SEED Grant Guidelines

10% cash match required



\$10,000

Minimum Request



\$25,000

Maximum Award Amount

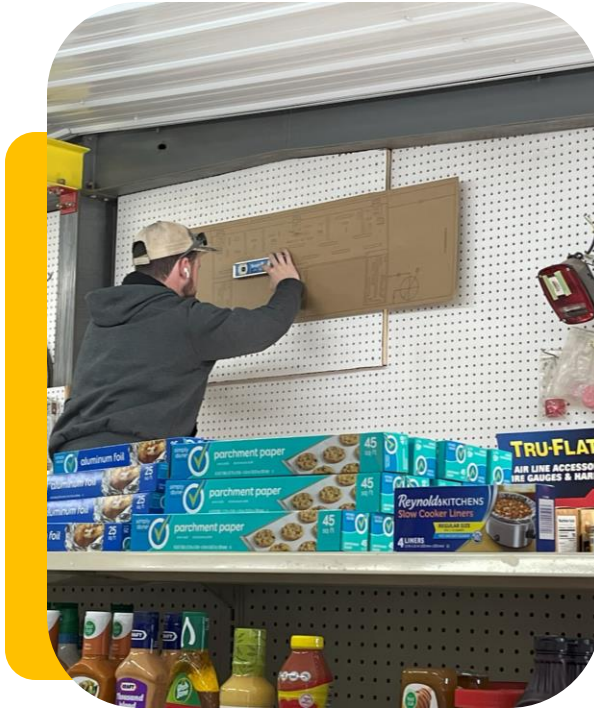
Matching funds can include but are not limited to local fiscal recovery funds, Community Service Tax Credit Program funds, Community Development Block Grant (CDBG) funds, USDA program, and funds from a general operating account.

SEED Grant Award Timeline



Application Opens

The Salesforce application portal opens on August 29th



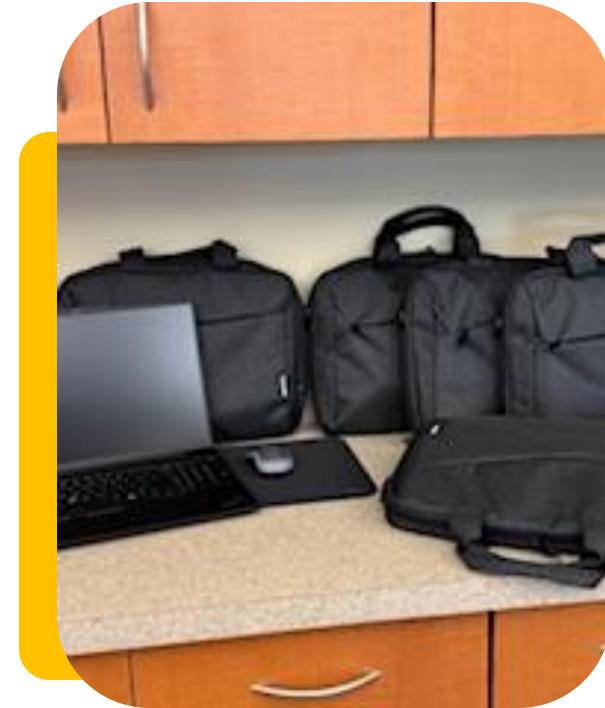
Office Hours

10:00 – 11:00 AM on
September 4th, September 8th,
October 2nd and October 16th



Application Closes

The Salesforce application portal closes at 11:59 PM on October 28th



Awards Announced

Awards will be announced in December 2025

SEED Grant Project Timeline

Project Start

Construction must begin with 4 months of a fully executed grant agreement.

Project Complete

Project must be completed by December 31, 2026.



Eligibility Requirements

Population of not more than 5,000 people located in:

Allen, Anderson, Barber, Bourbon, Brown, Chase, Chautauqua, Cherokee, Cheyenne, Clark, Clay, Cloud, Coffey, Comanche, Decatur, Doniphan, Edwards, Elk, Ellsworth, Gove, Graham, Grant, Gray, Greeley, Greenwood, Hamilton, Harper, Harvey, Haskell, Hodgeman, Jackson, Jewell, Kearny, Kingman, Kiowa, Labette, Lane, Lincoln, Linn, Logan, Marion, Marshall, Meade, Mitchell, Montgomery, Morris, Morton, Nemaha, Neosho, Ness, Norton, Osborne, Ottawa, Pawnee, Phillips, Pratt, Rawlins, Republic, Rice, Rooks, Rush, Russell, Scott, Sheridan, Sherman, Smith, Stafford, Stanton, Stevens, Sumner, Trego, Thomas, Wabaunsee, Wallace, Washington, Wichita, Wilson or Woodson

Communities who received the SEED 3.0 grant are not eligible for this round of funding.

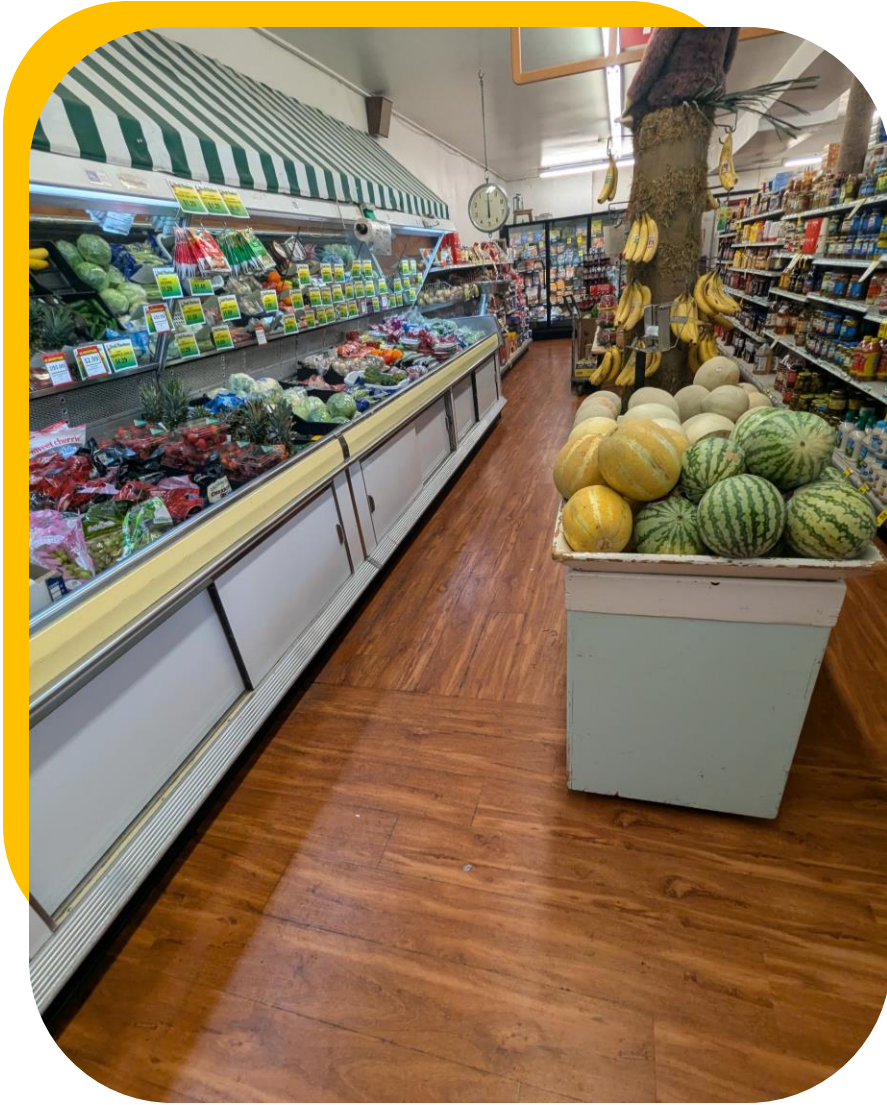




Eligibility Requirements

- County, City or Municipal Governments
- Economic Development Organizations
- Local Chamber of Commerce
- Tribal Organizations
- 501(c)(3) and 501(c)(6) Non-Profit Organizations





Eligibility Requirements

- Projects must be completed within 12 months.
- Funds must be used for tangible projects. Funds cannot be used for strategic planning, consultant reviews, community conversations or related activities.
- The funding cannot be used to support one-time programming such as speaker feeds, event fees or salaries.
- Funding cannot be used for consumable products — such as food, paper towels, cleaning supplies, etc.



Eligible Projects



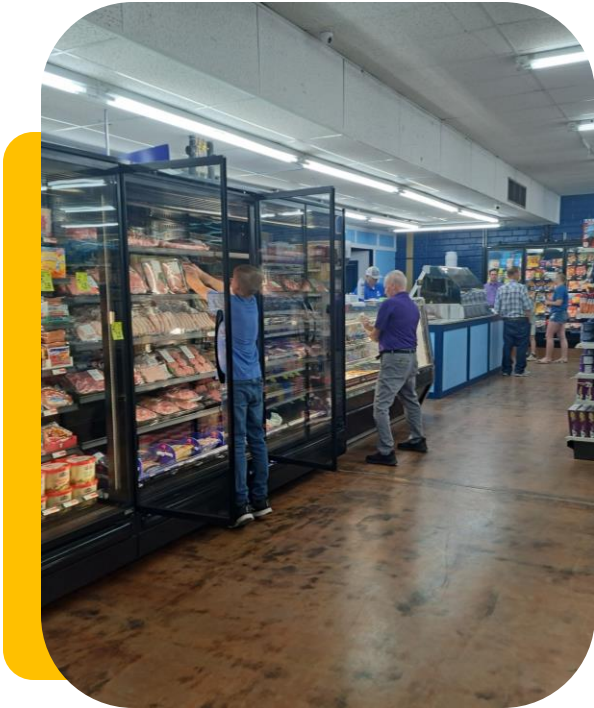
**Community
Vibrancy**



**Childcare & Senior
Programming**



Libraries



Food Retail

Projects must fit into one of these categories and each application may only include a maximum of three projects.

Eligible Projects

Community Vibrancy

This category intends to refresh, re-energize and unlock the attractiveness of rural communities. Projects should be permanent and low maintenance.



Eligible Projects

Community vibrancy projects may include but are not limited to:

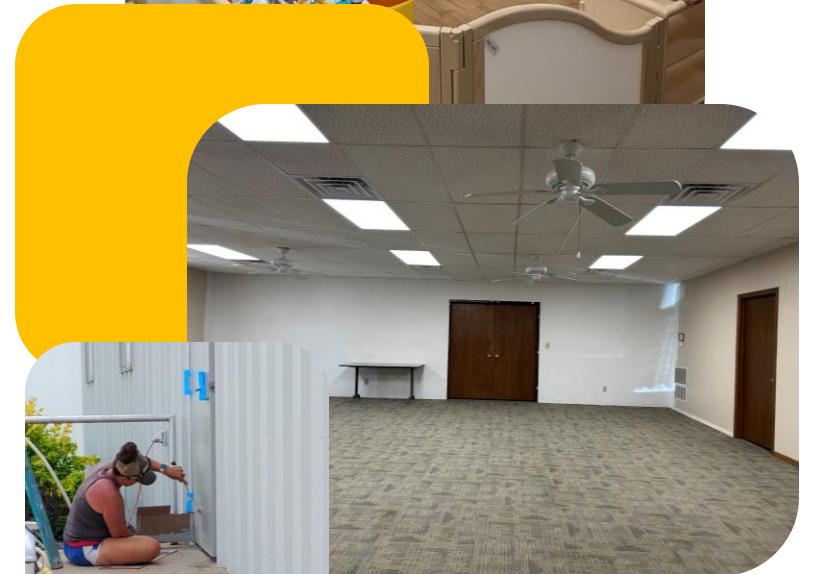
- Permanent public art installations
- Public murals
- Community placemaking improvements such as downtown seating, equipment for main street sound systems or projectors for gathering spaces
- Park and recreation equipment improvements
- Signage for communities, including welcome signs, downtown light pole banners and wayfinding signs (LED or electric signs are not eligible.)
- Downtown façade improvement or beautification of downtowns



Eligible Projects

Childcare & Senior Programming

This category intends to support and enhance high-quality early childhood care and senior programming activities for Kansas children, seniors and families.



Eligible Projects

Childcare programming projects may include but are not limited to:

- Educational materials such as books, art supplies, developmental toys and learning activities
- Program supplies, including but not limited to, materials needed for safe sleep and nutrition
- Indoor and outdoor play and recreation items
- Culturally inclusive learning materials
- Developmental health screenings and materials
- Supports for breastfeeding (e.g. information, privacy room, refrigerator, etc)
- Materials and support for family engagement and outreach
- Building improvements



Eligible Projects

Senior programming projects may include but are not limited to:

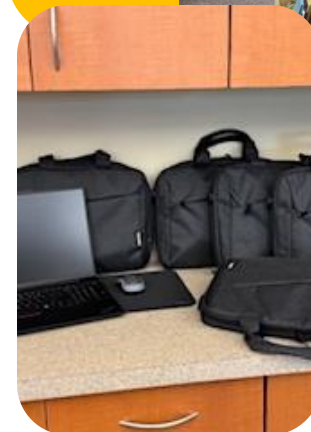
- Health, wellness and nutritional materials, equipment, and resources
- Indoor and outdoor recreational materials, equipment, and resources
- Art materials, equipment, and resources
- Technology
- Building improvements



Eligible Projects

Libraries

This category intends to support public libraries and empower them to continue to provide free and open access to a broad range of materials and services for people of all ages and backgrounds.



Eligible Projects

Library projects may include but are not limited to:

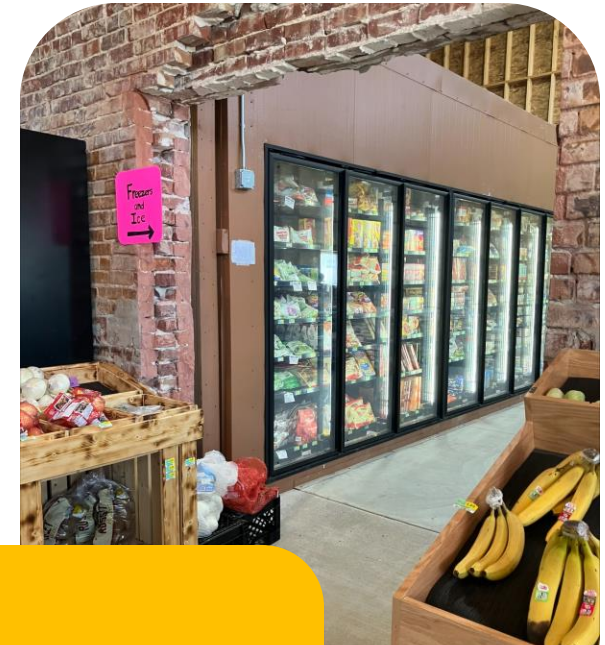
- Purchas of books and related reading materials
- Laptops, tablets, Wi-Fi hot spots and other equipment to help patrons access reliable internet outside of library facilities and to help them connect to employment, education, general information, and essential telehealth services
- Physical improvements to library facilities including but not limited to carpet, roofs, entryways, or meeting rooms
- Purchase of furniture to benefit library patrons, such as new reading chairs, installation of coffeemakers, tables and kiosks, etc.



Eligible Projects

Food Retail

This category intends to support local access to food retail establishments development, renovation and/or expansion. Eligible entities are those selling food including mobile markets and farmers markets.



Eligible Projects

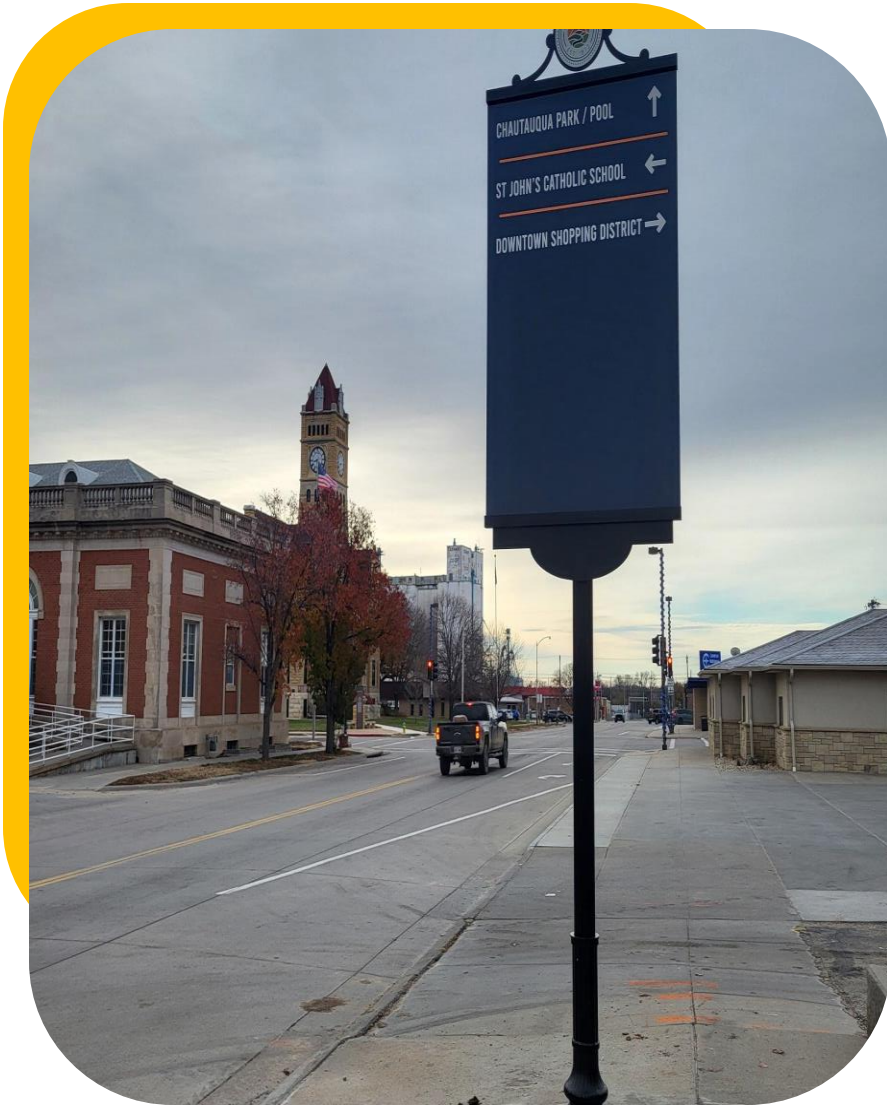
Food retail projects may include but are not limited to:

- Coolers, appliances, display tables, containers or furniture
- Cash registers or similar equipment and technology
- Energy efficiency improvements
- Building rehabilitation



Application Components

- Projects must be completed within 12 months.
- Funds must be used for tangible projects. Funds cannot be used for strategic planning, consultant reviews, community conversations or related activities.
- The funding cannot be used to support one-time programming such as speaker feeds, event fees or salaries.
- Funding cannot be used for consumable products — such as food, paper towels, cleaning supplies, etc.





**Questions?
Join virtual office
hours or contact
us at SEED@ks.gov!**





Let's Talk

www.kansascommerce.gov

KANSAS
COMMERCE